

Enterprise Solutions Catalog **2011**



Enterprise Solutions Catalog **2011**

1 PatchView Solution

1.1 PatchView for the Enterprise	8
1.2 PVMMax	13

2 EPV

EPV	25
-----------	----

3 siteWIZ

siteWIZ	33
---------------	----

4 Copper Solutions

4.1 Patch Panels for Copper Cabling	41
4.2 Communication Outlets for Copper Cabling	63
4.3 Cables for Copper Cabling	81
4.4 Patch Cords & SMART Jumpers for Copper Cabling	103
4.5 Connectors for Copper Cabling	121
4.6 Additional Solutions for Copper Cabling	127

5 Fiber Optic Solutions

5.1 Patch Panels for Fiber Optic Cabling	133
5.2 Communication Outlets & Adapters for Fiber Optic Cabling	149
5.3 Cables for Fiber Optic Cabling	155
5.4 Patch Cords & SMART Jumpers for Fiber Optic Cabling	167

Appendices

Warranties	180
Index	184

For easy part number identification please turn to the index at the end of the catalog.



PatchView Solution

PatchView Solution



PatchView is a real-time intelligent infrastructure management (IIM) solution.

PatchView is a uniquely effective tool for documenting and monitoring the network infrastructure, and for planning, managing, provisioning and maintaining all IT assets. Its field-proven features help IT organizations improve IP asset management, optimize network utilization, automate daily operations and enforce inter-departmental data sharing. Suitable for both datacenter and workspace environments, PatchView is used by global organizations to standardize their management of central and remote branches infrastructure and to centralize many IT tasks.

In contrast with other IIM solutions, RiT's IIM is a flexible solution that adapts to your existing workflow. PatchView's intelligence frees you to focus on what needs to be done, letting the system determine the "how" to ensure the optimal infrastructure/network configuration.

To maximize control over the IT environment, PatchView provides comprehensive, fully-accurate documentation of all network and infrastructure components, advanced IP devices detection and alert capabilities, all in a user-friendly package. Once all available information about the network infrastructure is integrated into a single reliable source, organizations are able to achieve significant improvement in network planning, control and utilization.

Components: The PatchView IIM solution consists of SMART cabling components, PVMax™ intelligent hardware and sophisticated PatchView for the Enterprise™ (PV4E) software applications.

Section 1

PatchView for the Enterprise™	8
PVMax™	13
PVMax Master™	14
PVMax Master Expander™	15
PVMax Expander™	16
PVMax Scanner™ / PVMax Mini Scanner™	17
PVMax Local Master™	18
PVMax Local Scanner™	19
PVMax Security Controller™	20
PVMax Indicator Controller™	21
PVMax Control Pad™	22
Round Attachment Cord™	23

PatchView for the Enterprise

PatchView for the Enterprise

PatchView for the Enterprise
(PV4E)

PatchView for the Enterprise™ (PV4E) management software takes the guesswork and legwork out of managing any organization's network infrastructure.

PV4E is a field-proven, comprehensive solution for real-time, location-based control over infrastructure and networked devices. Its use simplifies site **planning** and **daily provisioning** activities while bringing a new efficiency to **maintenance** and **security** activities. In addition, the system automatically maintains an up-to-date **inventory** of all assets – whether located across a campus or an ocean – thereby providing comprehensive visibility into datacenter and workspace facilities and equipment utilization.

As part of its vision of an end-to-end managed provisioning process, RiT has developed a fully-integrated **Automated Provisioning Tool™** for **datacenters** and **people workspace** environments. PV4E has been proven to reduce time spent on planning and implementing tasks and to significantly reduce human error. As an open-platform system, PV4E integrates seamlessly with the full range of help desk, ticket management, network management, asset management and other management and back office applications.

PV4E's capabilities can be utilized and implemented by any external application or system in the organization's network using **RiT's Software Development Kit (SDK)** for integrations.

RiT offers a unique **Discovery Module** that automatically discovers all the network devices and locates them in the actual physical location. For every device, the system resolves the host name and device type (servers, printers, IP-phones and other IP devices).

In addition, **RiT's Dashboard™** represents a personalized, intuitive tool for real-time monitoring of Key Performance Indicators (KPI's) and trends. Its sophisticated alert mechanism and pinpointed drill down capabilities minimize the time and effort required to identify and troubleshoot the root-cause of infrastructure problems.

PatchView for the Enterprise
(PV4E)

For personnel in datacenters and communication rooms, RiT offers the **SitePro™**, the ultimate PDA application. Designed for hand-held devices, SitePro automatically guides users to flawless work order execution, including initial instructions, error correction, extensive on-device information display and provisioning operations.

The latest version of PV4E has been enhanced with RiT's innovative **Active I™** technology – the Actionable Graphical Interface and Platform. Active I boosts PatchView's speed and makes it easier to learn, thereby making it an even more powerful IT tool.

Developed under the Microsoft Silverlight framework, Active I offers a single, high performance smart-web-based graphical point of entry to make it easier to learn and operate the system's many functions. Via an intuitive visual interface, IT managers, facility managers and integrators are able to maintain an accurate bird's-eye view of the entire network, achieving full visibility and control over the communication room regardless of where they are actually located. The result: a smoother running network, reduced downtime and reduced tension throughout the IT organization.

Features

- Offers 100% reliable information, online, anywhere
- Real-time automated site planning, installation, documentation and daily operations management
- Proactive maintenance: early warning indication of emerging problems, real-time fault isolation and faster problem resolution leading to increased uptime
- Optimized asset utilization
- Identification and automatic tracking of all assets, e.g. datacenter servers, user PCs, IP phones and printers
- Identification and location of unauthorized devices that attempt to connect to the enterprise environment
- Seamless integration into overall organization processes
- Workforce management, business analytics and reports

PatchView for the Enterprise

PatchView for the Enterprise



Part Number	Description
Software Packages	
R5000400	PV4E 6.0 Core
R5000500	PV4E 6.0 Standard
R5000600	PV4E 6.0 Advanced
Software Modules	
R5004100	PV4E Discovery Module
R5003100	PV4E Provisioning Module
R5003000	PV4E PBX Module
R5003300	PV4E Cable Test Results Module
R5003400	PV4E SDK Runtime
Software Additional Ports	
R5000401	PV4E Core Additional Ports
R5000501	PV4E Standard Additional Ports
R5000601	PV4E Advanced Additional Ports
Software Upgrades	
R5000420	Upgrade from 5.X to PV4E 6.0 Core
R5000520	Upgrade from 5.X to PV4E 6.0 Standard
R5000620	Upgrade from 5.X to PV4E 6.0 Advanced
R5000530	Upgrade from 4.X to PV4E 6.0 Standard
Additional Software Products	
R5009808	RiT Enterprise Solutions Media Package
R5009900	RiT Enterprise Solutions Demo License
R5003704	Report Center - Additional user
R5003706	Report Center Publisher 6.0
R5004200	SiteBuilder 2.5
R5004208	SiteBuilder 2.5 Media Package
R5003600	PV4E Customization for a new switch driver
R5001000	RiT's Dashboard 2.2
R5001100	SitePro 1.4

Part Number	Description
3rd Party Products	
R5007300	Microsoft SQL 2008
R5007304	Microsoft SQL 2008 - Additional CAL
R5007100	Crystal Reports 11.0
Software Support Agreement	
R4007403	Premium Software Support Agreement, Second Line
R4007404	Premium Software Support Agreement, First Line

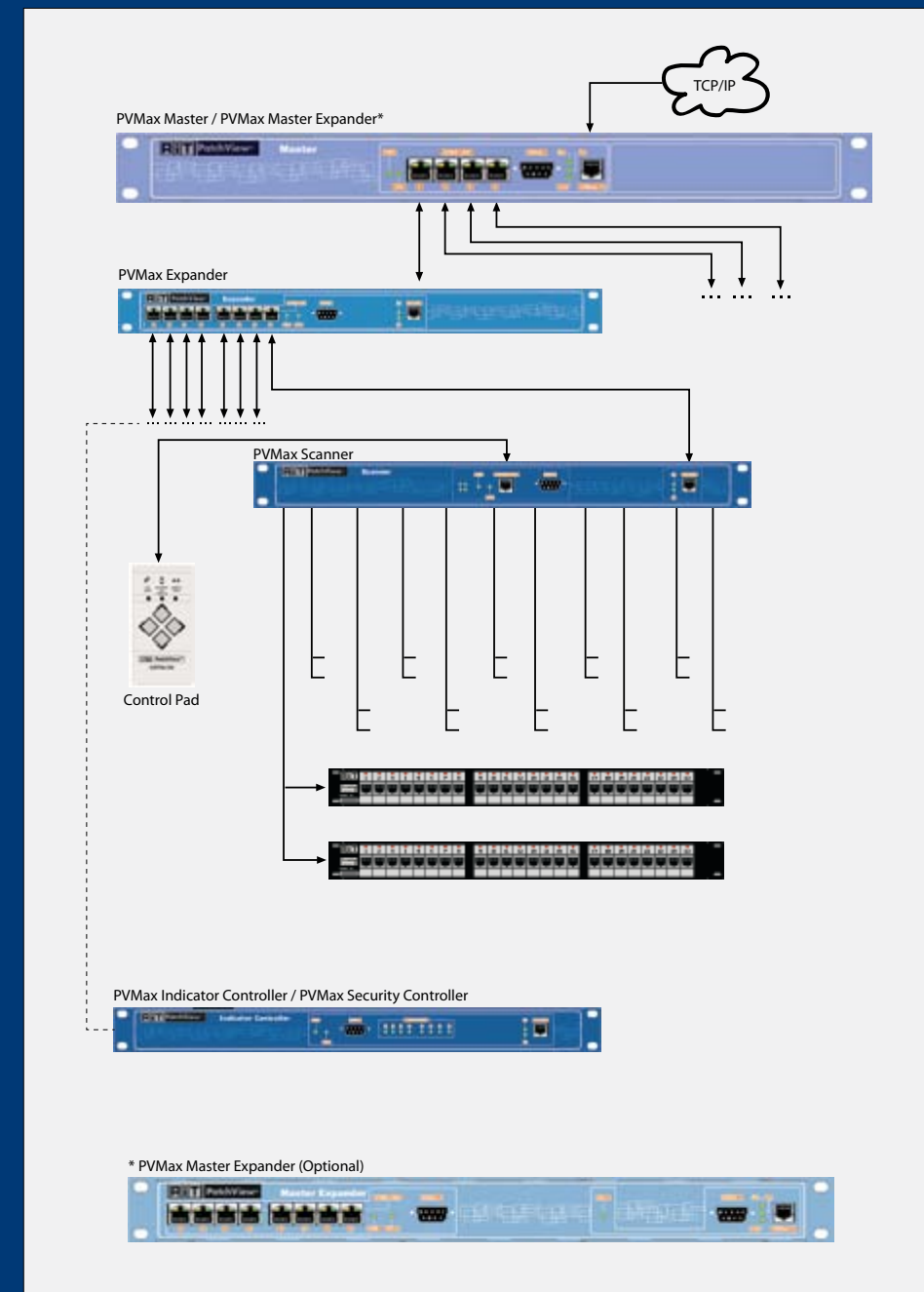


PVMax

PVMax is the hardware configuration of PatchView™, RiT's industry-leading intelligent infrastructure management (IIM) solution. Providing a complete and accurate view of the infrastructure connectivity, the PVMax modular design offers maximum configuration flexibility.

Using the PVMax Expanders the system can be cascaded multiple levels from the PVMax Master. This hierarchical system allows scanning of unlimited number of ports located on SMART Patch Panels.

PVMax allows the user to operate the system over a large geographic area.



PVMax Master



Features

The PVMax Master™ is the hierarchy's apex and has the ability to monitor the entire system.

The PVMax Master controls all underlying PVMax Scanners that manage the scanning algorithm.

The PVMax Master includes an SNMP agent that allows the management software to receive all the relevant data. It collects, saves and transmits connectivity data from the PVMax Scanners via the PVMax Expanders and updates the PatchView for the Enterprise™ (PV4E) management server.

The PVMax Master can monitor up to four communication rooms.

The maximum length of a copper cable connecting the PVMax Master to the PVMax Expander is 1,200m/4,000ft. Each one of these DOWN LINK ports represents a patching site.

Part Number	Description
R3820100	PVMax Master

PVMax Master Expander



Features

The PVMax Master Expander™ is a combination of the PVMax Master™ and the PVMax Expander™. It contains all the modules of the PVMax Master as well as the PVMax Expander's features. Only a single site can be defined when a PVMax Master Expander is used. The Master Expander cannot be connected to a PVMax Master.

The PVMax Master Expander can communicate with all devices connected to its 8 DOWN LINK ports. PVMax Expanders or PVMax Scanners are directly connected to one of the DOWN LINK ports located on the PVMax Master Expander's front panel.

The PVMax Scanners are connected to the PVMax Expander's DOWN LINK ports. Up to eight PVMax Scanners can be connected to each Expander. These PVMax Expanders are in turn connected to higher-level PVMax Expanders or directly to the PVMax Master Expander, depending on the site's configuration.

Part Number	Description
R3820110	PVMax Master Expander

PVMax Expander



Features

The PVMax Expander™ is used to expand the capabilities of the PVMax Master™. This is achieved by cascading Expanders from the PVMax Master's DOWN LINK ports.

Each PVMax Master DOWN LINK port is connected to a Level 1 PVMax Expander at a site. Many PVMax Expanders levels can be cascaded from the DOWN LINK ports of upper level PVMax Expanders. Each Level 1 PVMax Expander can be located in a separate site.

The PVMax Expander allows all devices connected to its DOWN LINK ports to communicate with all devices on its UP LINK port. The PVMax Expanders are the link between the PVMax Scanners and the PVMax Master thereby allowing the PVMax Master to communicate with all the PVMax Scanners in the system.

The PVMax Scanners are connected to the DOWN LINK ports of PVMax Expanders. Up to eight PVMax Scanners can be connected to each Expander. These Expanders are in turn connected to higher-level Expanders or directly to the PVMax Master/PVMax Master Expander, depending on the site configuration.

Part Number	Description
R3820111	PVMax Expander

PVMax Scanner / PVMax Mini Scanner



Features

The PVMax Scanner™ monitors ports on the patch panels. The panels are connected to the Scanner by Scanner Attachment Cords.

In addition to the core scanning functionality, the PVMax Scanner acts as the mediator between the PVMax Control Pad™, used to activate the system processes, and the PVMax Master. The PVMax Control Pad can be connected to any PVMax Scanner within the site / patching area.

PVMax Scanners are mounted in the communication room racks at various sites, for example, different floors of a building or in other nearby buildings. They report on-site SMART patch panel connectivity information to the PVMax Master, which contains the SNMP agent.

There are two kinds of Scanners:

PVMax Scanner – includes 12 connectors and can support up to 24 panels (576 ports)

PVMax Mini Scanner – includes 6 connectors and can support up to 12 panels (288 ports)

Part Number	Description
R3820120	PVMax Scanner
R3820121	PVMax Mini Scanner

PVMax Local Master



Features

PVMax Local Master™ is a stand-alone device that manages the network and infrastructure of the organization. It combines the feature of the PVMax Master and the PVMax Scanner and is ideal for small patching sites. Connected directly to the network, PVMax Local Master scans and processes the connectivity information obtained from the patch panels and then sends the processed information to the PV4E server via the network. PVMax Local Master controls and manages the scanning algorithm as well.

There are two kinds of PVMax Local Masters:

PVMax Local Master 24 – includes 12 connectors and can support up to 24 panels (576 ports)

PVMax Local Master 12 – includes 6 connectors and can support up to 12 panels (288 ports)

Part Number	Description
R3820156	PVMax Local Master 12
R3820157	PVMax Local Master 24

PVMax Local Scanner



Features

An excellent solution for organizations with small remote branches, PVMax Local Scanner™ is a stand-alone device that manages the physical layer network. It is connected directly to the network and is able to monitor up to 6 panels (144 ports). PVMax Local Scanner scans and processes the panels' physical connectivity information, and sends it via the network to the PV4E server. PVMax Local Scanner also controls and manages the scanning algorithm.

Part Number	Description
R3820151	PVMax Local Scanner

PVMax Security Controller



Features

The PVMax Security Controller™ enables control of a variety of sensors and remote-controlled devices from the PV4E management server. Sensors such as temperature, humidity, flood etc., and remote devices such as rack indicators, door locks, door switches, fans, can be physically connected to the PatchView™ system using the PVMax Security Controller.

The PVMax Security Controller supports up to 32 external devices and sensors:

- 8 Dry Contact Ports support devices that include power supply, such as Door Lock
- 16 I/O ports to which different sensors can be connected
- 8 Output Ports support up to 8 Rack Indicators

Part Number	Description
R3820130	PVMax Security Controller

PVMax Indicator Controller



Features

In order to better trace required ports in a large installation, whenever a LED is lit on any port in any SMART Patch Panel, the PVMax Indicator Controller™ sends a signal to the Rack Indicator on top of that rack. The Rack Indicator flashes to guide the technician to the Rack.

The PVMax Indicator Controllers are connected to the PVMax Expanders. The Rack Indicators, which are located on top of each rack, are connected to the PVMax Indicator Controller. The PVMax Indicator Controller is related to all ports on the SMART Patch Panels of each rack.

PVMax Indicator Controllers and Rack Indicators are typically used in large communication rooms.

Part Number	Description
R3820140	PVMax Indicator Controller
R3825020	PVMax Rack Indicator

PVMax Control Pad



Features

PVMax Control Pad™ guides the technician through the process of connecting and disconnecting the patch cords to complete the links defined in the system.

By activating one of the three functions of the PVMax Control Pad, the technician is guided through different processes by the LEDs on the SMART Patch Panels ports. The LED either stays lit or flashes depending on the activity being performed or required.

The PVMax Control Pad can be connected to any PVMax Scanner within the site / patching area.

Part Number	Description
R3736300	PVMax Control Pad

Round Attachment Cord



Features

PVMax Scanners are connected to the broad range of the RiT SMART Patch Panel with Round Attachment Cords:

- Supplied in various lengths
- Several types of Round Attachment Cords are available to fit the various types of SMART Patch Panels

Part Number	Description
Round Attachment Cord, Group B, UTP	
R3814015	Round Attachment Cord, Group B, UTP, 1.5m
R3814025	Round Attachment Cord, Group B, UTP, 2.5m
R3814040	Round Attachment Cord, Group B, UTP, 4.0m
R3814060	Round Attachment Cord, Group B, UTP, 6.0m
R3814120	Round Attachment Cord, Group B, UTP, 12.0m
Round Attachment Cord, Group A, UTP	
R3818015	Round Attachment Cord, Group A, UTP, 1.5m
R3818025	Round Attachment Cord, Group A, UTP, 2.5m
R3818060	Round Attachment Cord, Group A, UTP, 6.0m
R3818120	Round Attachment Cord, Group A, UTP, 12.0m
PVMax Splitter	
R3825010	PVMax Splitter
R3818002	Splitter Attachment Cord, UTP, 0.2m

The image features a large white circle on the left side, partially overlapping a solid purple background on the right. Below the circle, there are several overlapping, curved shapes in shades of grey and purple. The text 'EPV' is centered within the white circle.

EPV



EPV



RiT's EPV™ is the industry's risk-free, easy-to-deploy cabling management solution.

With no need for additional software or servers, the plug-n-play EPV delivers an up-to-date, real-time picture of your cabling infrastructure anytime, using a web browser. The system is exceptionally easy to use. Working automatically, the EPV continuously collects connectivity information from your patch panels and communication racks, and uses it to update its internal databases stored in non-volatile memory. Whenever you need it, you can display this accurate information on Internet browsers via a permission-based GUI, making it accessible wherever there is Internet connection. Just as important, since all connectivity changes are detected immediately, the EPV can send notifications and real-time alerts the moment a change occurs, even via email.

The EPV is also invaluable for streamlining ongoing maintenance operations. For example, to help you achieve always-perfect patching, the EPV operates the LEDs on your patch panels, guiding your technicians in the comms rooms. This multiplies the amount of work accomplished while reducing overall network disruption and downtime. EPV is simple to install. The hardware components of the system – whether RiT's combined EPV Central and EPV Scout solution or EPV Controller, depending upon the size of the network – are easy to connect to the panels in the communication racks. Once the hardware is connected, the EPV begins working immediately with no need for a time-consuming database-building step.

As an additional advantage, the EPV can be upgraded easily to RiT's PatchView™, the industry's leading full-featured intelligent infrastructure management (IIM) solution with no need to add additional hardware.

Section 2

EPV Central	28
EPV Scout	29
EPV Controller	30
Control Pad	31
Round Attachment Cord	32

EPV Central



Features

The EPV Central™ connects easily to panels in the communication racks through the EPV Scouts™ and supports up to 4,608 ports per site. Once the EPV Central is connected, it provides comprehensive, up-to-date connectivity information to manage your network infrastructure effectively. It collects connectivity information from panels, and uses the information to update its internal databases stored in non-volatile memory.

The EPV Scouts are connected to the EPV Central's DOWN LINK ports, and up to eight EPV Scouts can be connected to it.

Part Number	Description
R3820112	EPV Central

EPV Scout



Features

EPV Scout™ monitors ports on the patch panels. The panels are connected to the EPV Scout by Round Attachment Cords.

In addition to the core scanning functionality, EPV Scouts act as the mediator between the Control Pad, used to activate the system processes, and the EPV Central. The Control Pad may be connected to any EPV Scout within the site/patching area.

EPV Scouts are mounted in the communication room racks at various sites, for example, different building floors or in other buildings located nearby. They report on-site SMART patch panel connectivity information to the EPV Central, which runs an SNMP agent.

The EPV Scout includes 12 connectors and can support up to 24 panels (576 ports).

Part Number	Description
R3820123	EPV Scout

EPV Controller



Features

The EPV Controller™ is a stand-alone device that manages the organization's network infrastructure. It combines the EPV Central and the EPV Scout features and is ideal for small patching sites. The EPV Controller scans and processes the connectivity information obtained from the patch panels, and uses the information to update its internal databases stored in non-volatile memory.

There are two kinds of EPV Controllers:

- **EPV Controller 24** – Provides 12 connectors and can support up to 24 panels (576 ports)
- **EPV Controller 12** – Provides 6 connectors and can support up to 12 panels (288 ports)

Part Number	Description
R3820153	EPV Controller 12 Port
R3820154	EPV Controller 24 Port

Control Pad



Features

The Control Pad guides the technician through the process of connecting and disconnecting the patch cords. This completes the links defined in the system.

By activating one of the three functions of the Control Pad, the technician is guided through different processes by the LEDs on the SMART Patch Panels ports. The LED either stays lit or flashes depending on the activity being performed or required.

The Control Pad can be connected to any EPV Scout within the site / patching area.

Part Number	Description
R3736300	Control Pad



Round Attachment Cord



Features

EPV Scouts or EPV Controllers are connected to the broad range of the RiT SMART Patch Panels with Attachment Cords:

- Supplied in various lengths
- Several types of Attachment Cords are available to fit the various types of SMART Patch Panels

Part Number	Description
Round Attachment Cord, Group B, UTP	
R3814015	Round Attachment Cord, Group B, UTP, 1.5m
R3814025	Round Attachment Cord, Group B, UTP, 2.5m
R3814040	Round Attachment Cord, Group B, UTP, 4.0m
R3814060	Round Attachment Cord, Group B, UTP, 6.0m
R3814120	Round Attachment Cord, Group B, UTP, 12.0m
Round Attachment Cord, Group A, UTP	
R3818015	Round Attachment Cord, Group A, UTP, 1.5m
R3818025	Round Attachment Cord, Group A, UTP, 2.5m
R3818060	Round Attachment Cord, Group A, UTP, 6.0m
R3818120	Round Attachment Cord, Group A, UTP, 12.0m



siteWIZ

siteWIZ

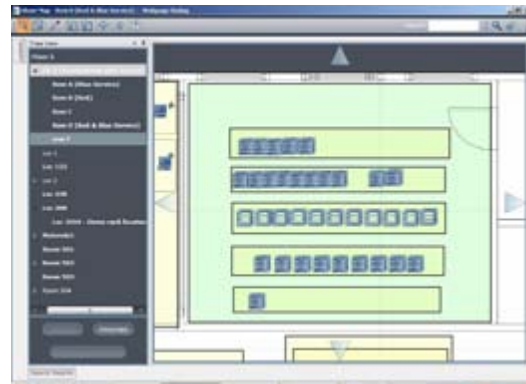


siteWIZ™ makes short work of managing your network infrastructure. A powerful software solution designed for today's diversified networks, siteWIZ provides the comprehensive documentation and immediate visibility that you need to efficiently plan, manage, provision and maintain your network and its components. This enables you to reduce downtime, improve asset utilization, availability and security, and ensure compliance.

Highly flexible and fully scalable, siteWIZ provides a comprehensive infrastructure management solution for any enterprise, regardless of its size or the complexity of its network. It is compatible with network infrastructure from all vendors, enabling you to improve your overall productivity. siteWIZ also provides a smooth path to real-time management through an easy upgrade to RiT's PatchView™ intelligent infrastructure management (IIM) solution.

The latest version of siteWIZ has been enhanced with RiT's innovative Active I™ technology – the Actionable Graphical Interface and Platform. Active I boosts the speed of siteWIZ and makes it easier to learn, thereby making it an even more powerful IT tool.

siteWIZ



Features

- Provides accurate infrastructure documentation – gives you complete visibility of your network whenever you need it and supports regulatory compliance.
- Supports accurate and speedy network monitoring – enables you to automatically discover, map and understand the status of all networked assets; online information can be accessed from the field with the addition of RiT's innovative SitePro handheld application.
- Reduces network downtime – provides visibility into connectivity, asset utilization and device and port locations, enabling you to quickly analyze problems, identify weak points, and implement solutions, improving network stability.
- Cuts operational costs – efficient planning, implementation and accurate documentation reduce the time and resources needed for network maintenance, personnel moves, equipment adds and other daily operations.
- Reduces capital costs – accurate utilization of network assets eliminates unnecessary equipment purchases.
- Up-to-date inventory of assets – provides comprehensive visibility into the organizations facilities and equipment utilization

siteWIZ



Complementary Products

RiT's Dashboard™ is the ultimate online manager's tool. It continuously monitors the infrastructure and all active network devices, including patch panels, switches, servers, PCs, phones and printers. It tracks Key Performance Indicators (KPI's) for the network and provides an advanced alert mechanism as well as trends and reports. RiT's Dashboard is easy to personalize to the user's specific requirements. User-defined KPI's can be imported as data from external applications into the RiT's Dashboard.

Report Center™ provides a broad range of out-of-the-box reports, as well as a powerful reporting engine for creating customized reports. All reports can be exported to a multitude of formats, and/or scheduled for an automatic distribution.

SiteBuilder™ is an effective tool for mass import of asset and connectivity data from existing Microsoft Excel tables. It enables the user to create work orders while harnessing the input speed of Microsoft Excel.

SitePro™ is an advanced handheld application. It extends powerful management capabilities onto the network floor, whether in the datacenter, communication room, workspace or at a remote location. SitePro makes it possible for the engineer or manager working onsite to access and manage online information regarding tasks, provisioning, connectivity and assets and to communicate with the administrator, thus improving efficiency and productivity.

SDK (Software Development Kit) enables siteWIZ capabilities to be used with any external application or system in the organization's network. As an open-platform system, siteWIZ can integrate seamlessly with the full range of help desk, network management and asset management tools. siteWIZ SDK uses common interface technologies, such as web services and DLLs.

RiT's Software Solutions

Part Number	Description
Software Packages	
R5100400	siteWIZ 3.0 Core
R5100500	siteWIZ 3.0 Standard
R5100600	siteWIZ 3.0 Advanced
Software Modules	
R5104100	siteWIZ Discovery Module
R5103100	siteWIZ Provisioning Module
R5103000	siteWIZ PBX Module
R5103300	siteWIZ Cable Test Results Module
R5103400	siteWIZ SDK Runtime
Software Additional Ports	
R5100401	siteWIZ Core Additional Ports
R5100501	siteWIZ Standard Additional Ports
R5100601	siteWIZ Advanced Additional Ports
Software Upgrades	
R5100420	Upgrade from 2.0 to siteWIZ 3.0 Core
R5100520	Upgrade from 2.0 to siteWIZ 3.0 Standard
R5100620	Upgrade from 2.0 to siteWIZ 3.0 Advanced
Additional Software Products	
R5009708	siteWIZ Media Package
R5109900	siteWIZ Demo License
R5003704	Report Center - Additional user
R5003706	Report Center Publisher 6.0
R5004200	SiteBuilder 2.5
R5004208	SiteBuilder 2.5 Media Package
R5003600	siteWIZ Customization for a new switch driver
R5001000	RiT's Dashboard 2.2
R5001100	SitePro 1.4
R3820046	SDK Developer
3rd Party Products	
R5007300	Microsoft SQL 2008
R5007304	Microsoft SQL 2008 - Additional CAL
R5007100	Crystal Reports 11.5
Software Support Agreement	
R4007403	Premium Software Support Agreement, Second Line
R4007404	Premium Software Support Agreement, First Line



The background features a large white circle on the left side, partially overlapping a solid red area on the right. Below the circle, there are several overlapping, semi-transparent grey shapes that resemble stylized hills or abstract architectural forms. The overall composition is clean and modern.

Copper Solutions

Patch Panels for Copper Cabling



RiT's large selection of Category 6A, Category 6 and Enhanced Category 5 Patch Panels meets all LAN cabling requirements. Our unique products such as RJ-RJ Patch Panels and SMART Voice Blocks are also included in RiT's wide product range.

Accommodating fully shielded or unshielded cables, these easy-to-assemble Patch Panels can be ordered with or without patching switches and with or without provisions for RiT's PatchView™ system. Advanced SMARTen™ models feature Category 6A performance for 10 Giga, SMART CLASSix™ models feature Category 6 performance and SMART Giga™ models feature Enhanced Category 5 performance, for supporting protocols of up to 1,000 Mbps.

Section 4.1

SMART Modular Keystone 24 Patch Panels, PVMax	42
Modular Keystone 24 Patch Panels	43
SMARTen 24 UTP Patch Panel	44
SMARTen 24 STP Patch Panel	45
SMARTen 48 Patch Panels (with Patching Switches)	46
SMART CLASSix 24/48 UTP Patch Panels	47
SMART CLASSix 24 STP Patch Panels	48
SMART CLASSix 48 1U Patch Panel (High Density)	49
SMART CLASSix 48 UTP Patch Panels with Patching Switches	50
SMART CLASSix 48 STP Patch Panels with Patching Switches	51
SMART CLASSix RJ-RJ 24 Patch Panels	52
SMART CLASSix RJ-RJ 48 Patch Panels	53
SMART CLASSix 48 UTP Angled Patch Panel	54
SMART Giga 24 Patch Panel – Vertical	55
SMART Giga 24/48 UTP Patch Panels	56
Category 3 UTP 50 Port Patch Panel	57
SMART Krone Voice Blocks	58
VoicelT	59
SMART 110 Voice Blocks	60
Patch Cord Organizers	61
Termination Tools	62

Patch Panels for Copper Cabling

Patch Panels for Copper Cabling

SMART Modular Keystone 24 Patch Panels, PVMMax



Features

- Modular design, models accommodate up to 24 UTP or STP keystone-type jacks in 1U
- Simple assembly and installation, jacks are terminated separately and then mounted onto the panel
- Models incorporating RiT SMARTen Jacks conform to ANSI/TIA/EIA-568-C.2, ISO/IEC 11801 2nd edition and CENELEC EN50173 for Category 6A/CLASS E_A
- Models incorporating RiT CLASSix Jacks conform to ANSI/TIA/EIA-568-C.2, ISO/IEC 11801 2nd edition and CENELEC EN50173 for Category 6/CLASS E
- Models incorporating RiT Giga Jacks conform ANSI/TIA/EIA-568-C.2, ISO/IEC 11801 2nd edition and CENELEC EN50173 for Category 5e/CLASS D
- Different jacks may be mixed on the same panel
- The STP model includes an additional fixture for proper grounding requirements
- Includes three labeling tags with transparent plastic cover
- PatchView™ option only (for supporting PatchView, SMART ReView Jumpers should be used)

Part Number	Description
R3260080	SMART Keystone Panel, UTP, 24, PVMMax
R3260081	SMART Keystone Panel, STP, 24, PVMMax
R3012202	Blank Insert Keystone Panel, Black

Modular Keystone 24 Patch Panels



Features

- Modular design, models accommodate up to 24 UTP or STP keystone-type jacks in 1U
- Simple assembly and installation, jacks are terminated separately and then mounted onto the panel
- Models incorporating RiT SMARTen Jacks conform to ANSI/TIA/EIA-568-C.2, ISO/IEC 11801 2nd edition and CENELEC EN50173 for Category 6A/CLASS E_A
- Models incorporating RiT CLASSix Jacks conform to ANSI/TIA/EIA-568-C.2, ISO/IEC 11801 2nd edition and CENELEC EN50173 for Category 6/CLASS E
- Models incorporating RiT Giga Jacks conform ANSI/TIA/EIA-568-C.2, ISO/IEC 11801 2nd edition and CENELEC EN50173 for Category 5e/CLASS D
- Different jacks may be mixed on the same panel
- The STP model includes an additional fixture for proper grounding requirements
- Non-PatchView™ option only

Part Number	Description
R3735081	Keystone Panel, UTP, 24
R3735082	Keystone Panel, STP, 24
R3012202	Blank Keystone Module, Black

Patch Panels for Copper Cabling

Patch Panels for Copper Cabling

SMARTen 24 UTP Patch Panel



Features

- Supports 24 ports per 1U
- High performance, supportable bandwidth up to 500 MHz supporting IEEE 802.3an 10Gbps application
- Special cap design for minimizing Alien Cross-Talk
- Conforms to ANSI/TIA/EIA-568-C.2, ISO/IEC 11801 2nd edition and CENELEC EN50173 for Category 6A/CLASS E_A channel requirements
- Simple labor-saving termination using standard 110 & Krone Block termination tools
- Enhanced cable retention fixture
- Backward compatible with Category 5e and Category 6 cabling standards
- Supports solid and stranded 22-26 AWG wires
- PatchView™ option only

Part Number	Description
R3940014	SMARTen UTP Panel, 24, PVMMax

SMARTen 24 STP Patch Panel



Features

- Supports 24 ports per 1U
- High performance, supportable bandwidth up to 500 MHz supporting IEEE 802.3an 10Gbps application
- Conforms to ANSI/TIA/EIA-568-C.2, ISO/IEC 11801 2nd edition and CENELEC EN50173 for Category 6A/CLASS E_A channel requirements
- Special cap design for eliminating Alien Cross-Talk
- Simple labor-saving termination using standard Krone and 110 termination tools
- Excellent provisions for terminating shielded cables
- Enhanced cable retention fixture
- Sealed casing for superior EMI/RFI protection for shielded model panels
- Backward compatible with Category 5e and Category 6 cabling standards
- Supports solid and stranded 22-26 AWG wires
- Meets the transfer impedance standard requirement
- PatchView™ option only

Part Number	Description
R3940114	SMARTen STP Panel, 24, PVMMax

Patch Panels for Copper Cabling

Patch Panels for Copper Cabling

SMARTen 48 Patch Panels (with Patching Switches)

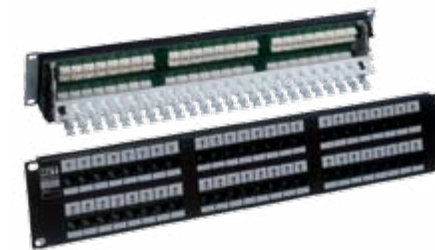


Features

- Dramatically reduce the need for patch cords in normal use by integrating internal mounted Patching Switches
- A unique innovative technology connects between each two vertical ports; Patch Cord is needed only to connect non vertical ports
- Models for shielded or unshielded cabling systems
- High performance panels that support Category 6A performance specifications up to 500 MHz
- Conform to ANSI/TIA/EIA-568-C.2, ISO/IEC 11801 2nd edition and CENELEC EN50173 for Category 6A/Class E_A
- Special cap design for minimizing Alien Cross-Talk
- Simple labor-saving termination using standard 110 & Krone termination tools
- Backward compatible with Category 5e and Category 6 cabling standards
- Compatible with 22-26 AWG Solid or stranded wire cables
- High durability and reliability

Part Number	Description
R3244000	SMARTen UTP Panel, 48, Switches
R3244004	SMARTen UTP Panel, 48, Switches, PVMMax
R3244010	SMARTen STP Panel, 48, Switches
R3244014	SMARTen STP Panel, 48, Switches, PVMMax

SMART CLASSix 24/48 UTP Patch Panels



Features

- Support 24 ports per 1U, 48 ports per 2U
- Conform to ANSI/TIA/EIA-568-C.2, ISO/IEC 11801 2nd edition and CENELEC EN50173 for Category 6/CLASS E
- Simple labor-saving termination using standard 110 and Krone termination tools
- Enhanced cable retention fixture
- Backward compatible with Category 5e and Category 5 cabling standards
- Support solid 22-24 AWG wires and stranded 24-26 AWG
- PatchView™ and non-PatchView options

Part Number	Description
R3910010	SMART CLASSix UTP Panel, 24
R3910011	SMART CLASSix UTP Panel, 24, PV
R3910014	SMART CLASSix UTP Panel, 24, PVMMax
R3914010	SMART CLASSix UTP Panel, 48
R3914014	SMART CLASSix UTP Panel, 48, PVMMax

Patch Panels for Copper Cabling

Patch Panels for Copper Cabling

SMART CLASSix 24 STP Patch Panels

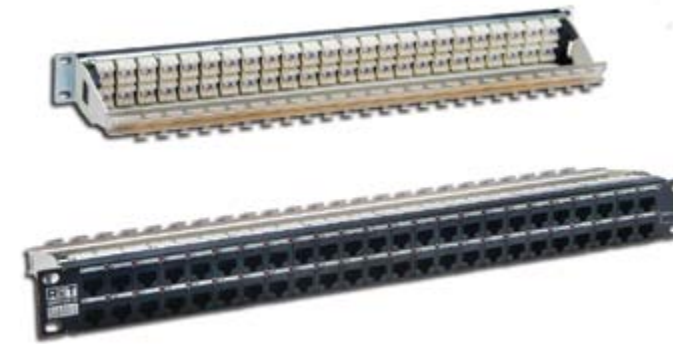


Features

- Support 24 ports per 1U
- High performance panels that support all Category 6 connecting hardware performance specifications up to 250 MHz
- Conform to ANSI/TIA/EIA-568-C.2, ISO/IEC 11801 2nd edition and CENELEC EN50173 for Category 6/CLASS E
- Simple labor-saving termination using standard Krone and 110 termination tools
- Excellent provisions for terminating shielded cables
- Enhanced cable retention fixture
- Sealed casing for superior EMI/RFI protection for shielded model panels
- Meet the transfer impedance standard requirement
- Support solid 22-24 AWG wires and stranded 24-26 AWG
- PatchView™ and non-PatchView options

Part Number	Description
R3910100	SMART CLASSix STP Panel, 24
R3910101	SMART CLASSix STP Panel, 24, PV
R3910104	SMART CLASSix STP Panel, 24, PVMMax

SMART CLASSix 48 1U Patch Panel (High Density)



Features

- Extremely high density Panel supports 48 ports, using only a rack space height of 1U
- Compatible with Unshielded Twisted Pairs (UTP) cabling systems
- Conforms to ANSI/TIA/EIA-568-C.2, ISO/IEC 11801 2nd edition and CENELEC EN50173 for Category 6/CLASS E
- Cable termination using 110 Block termination tool
- Enhanced cable retention fixture
- Compatible with 22-26 AWG solid or stranded wire cables
- PatchView™ option only

Part Number	Description
R3916014	SMART CLASSix UTP Panel, 48 1U, PVMMax

Patch Panels for Copper Cabling

Patch Panels for Copper Cabling

SMART CLASSix 48 UTP Patch Panels with Patching Switches

SMART CLASSix WARRANTY

CAT-6



Features

- Front mounted Patching Switches connect ports internally, dramatically reducing the need for patch cords
- Support 48 ports, using 2U of rack space
- Compatible to Unshielded Twisted Pairs (UTP) cabling systems
- High performance panels that support Category 6 performance specifications up to 250 MHz
- Conform to ANSI/TIA/EIA-568-C.2, ISO/IEC 11801 2nd edition and CENELEC EN50173 for Category 6/CLASS E
- Simple, labor saving assembly and installation
- Enhanced cable retention fixture
- Cable termination using 110 Block termination tool
- Compatible with 22-26 AWG solid or stranded wire cables
- High durability and reliability
- Patent pending
- PatchView™ and non-PatchView options

Part Number	Description
R3241000	SMART CLASSix UTP Panel, 48, Switches
R3241004	SMART CLASSix UTP Panel, 48, Switches, PVMMax

SMART CLASSix 48 STP Patch Panels with Patching Switches

SMART CLASSix WARRANTY

CAT-6



Features

- Front-mounted Patching Switches connect ports internally, dramatically reducing the need for patch cords
- Support 48 ports, using 2U of rack space
- Compatible to Shielded Twisted Pairs (STP) cabling systems
- High performance panels that support Category 6 performance specifications up to 250 MHz
- Conform to ANSI/TIA/EIA-568-C.2, ISO/IEC 11801 2nd edition and CENELEC EN50173 for Category 6/CLASS E
- Simple, labor saving assembly and installation using Krone and 110 Block termination tools
- Enhanced cable retention fixture
- Compatible with 22-26 AWG Solid or stranded wire cables
- High durability and reliability
- Patent pending
- PatchView™ and non-PatchView options

Part Number	Description
R3241010	SMART CLASSix STP Panel, 48, Switches
R3241014	SMART CLASSix STP Panel, 48, Switches, PVMMax

Patch Panels for Copper Cabling

Patch Panels for Copper Cabling

SMART CLASSix RJ-RJ 24 Patch Panels



Features

- Ideal for the representation of active equipment in a cross-connect environment
- Support 24 ports per 1U
- Conform to ANSI/TIA/EIA-568-C.2, ISO/IEC 11801 2nd edition and CENELEC EN50173 for Category 6/CLASS E
- A rear RJ-45 modular jack for simple connection makes the panel a labor-saving device that does not require a termination tool
- An enhanced rear cable retention fixture
- Backwards compatible with Category 5e cabling standards
- Models for UTP or STP cabling systems
- PatchView™ and non-PatchView options

Part Number	Description
R3911010	SMART CLASSix RJ-RJ UTP Panel, 24
R3911014	SMART CLASSix RJ-RJ UTP Panel, 24, PVMMax
R3911110	SMART CLASSix RJ-RJ STP Panel, 24
R3911114	SMART CLASSix RJ-RJ STP Panel, 24, PVMMax

SMART CLASSix RJ-RJ 48 Patch Panels



Features

- RJ-45 on rear of Panel for connecting network equipment with regular patch cords
- Front-mounted Patching Switches connect ports internally, dramatically reducing the need for patch cords
- Support 48 ports, using 2U of rack space
- High performance panels that support Category 6 performance specifications up to 250 MHz
- Conform to ANSI/TIA/EIA-568-C.2, ISO/IEC 11801 2nd edition and CENELEC EN50173 for Category 6/CLASS E
- Models for STP or UTP cabling systems
- Enhanced cable retention fixture
- High durability and reliability
- Simple, labor saving assembly and installation using Krone and 110 termination tools
- Compatible with 22-26 AWG solid or stranded wire cables
- Patent pending
- PatchView™ and non-PatchView options

Part Number	Description
R3243000	SMART CLASSix RJ-RJ UTP Panel, 48 1 Row, Switches
R3243004	SMART CLASSix RJ-RJ UTP Panel, 48 1 Row, Switches, PVMMax
R3243010	SMART CLASSix RJ-RJ STP Panel, 48 1 Row, Switches
R3243014	SMART CLASSix RJ-RJ STP Panel, 48 1 Row, Switches, PVMMax

Patch Panels for Copper Cabling

Patch Panels for Copper Cabling

SMART CLASSix 48 UTP Angled Patch Panels



Features

- Support 48 ports in 2U
- Angle of 130 degrees for improving patch cord bend radius and support high density rack configuration
- Conform to ANSI/TIA/EIA-568-C.2, ISO/IEC 11801 2nd edition and CENELEC EN50173 for Category 6/CLASS E
- Simple labor-saving termination using standard Krone and 110 Block termination tools
- Enhanced cable retention fixture
- Backward compatible with Category 5e cabling standards
- Support solid 22-24 AWG solid wires and 24-26 AWG stranded wires
- PatchView™ and non-PatchView options

Part Number	Description
R3917010	SMART CLASSix UTP 48 Angled
R3917014	SMART CLASSix UTP 48 Angled, PVMMax

SMART Giga 24 Patch Panel - Vertical



Features

- Supports 24 ports in 1U
- Simple labor saving assembly and installation
- Excellent provisions for terminating shielded cables
- Sealed casing for superior EMI/RFI protection
- Conforms to ANSI/TIA/EIA-568-C.2, ISO/IEC 11801 2nd edition and CENELEC EN50173 for Category 5e/CLASS D
- Compatible with STP cabling systems
- Compatible with 22-26 AWG solid or stranded wire cables
- Cable termination using Krone termination tool
- Provisions for cable routing and clamping with T-shaped anchors and cable-ties at the rear
- Non-PatchView™ option only

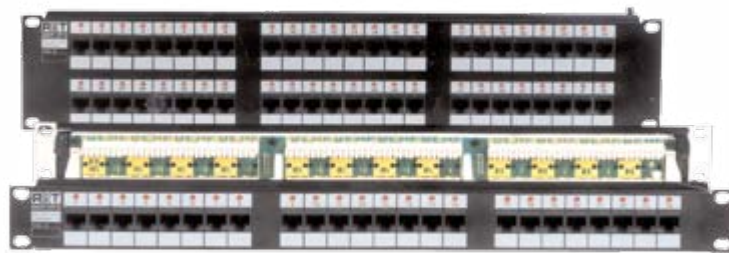
Part Number	Description
R3801020	SMART Giga STP Panel, 24, Vertical, Krone

Patch Panels for Copper Cabling

Patch Panels for Copper Cabling

SMART Giga 24/48 UTP Patch Panels

SMART
GIGA
WARRANTY
CAT-5E



Features

- UTP 24 - 1U high - 24 ports
UTP 48 - 2U high - 48 ports
- High performance, support 100 MHz data rates
- Conform to ANSI/TIA/EIA-568-C.2, ISO/IEC 11801 2nd edition and CENELEC EN50173 for Category 5e/CLASS D
- Cable termination using 110 Block termination tool
- Compatible with 22-26 AWG solid or stranded wires
- Models with optional cable retention fixture for enhanced strain relief and cable management available
- Non-PatchView™ option only

Part Number	Description
R3881124	SMART Giga UTP Panel, 24, 110
R3881148	SMART Giga UTP Panel, 48, 110
R3891124	SMART Giga UTP Panel, 24, 110, Cable Retention

Category 3 UTP 50 Port Patch Panel

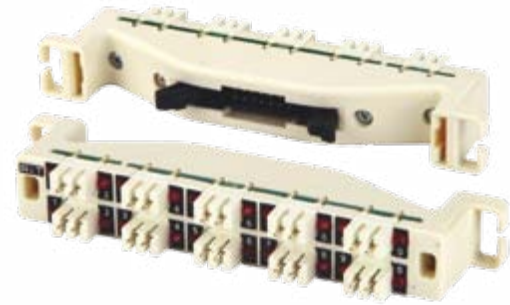


Features

- Simple labor saving assembly and installation
- High Density: supports 50 ports, using 1 U of rack space
- Compatible with 22-26 AWG
- Enhanced cable retention fixture
- High durability and reliability

Part Number	Description
R3260030	Category 3 UTP Panel, 50 Ports

SMART Krone Voice Blocks

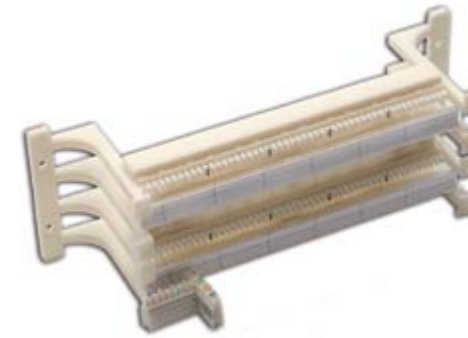


Features

- Used as an enhancement to connect to the PatchView™ system
- Offer the ability to scan and monitor multi-pair voice cabling based on Krone IDC Block
- Termination using standard Krone Block termination tool
- Compatible with standard plastic insulated copper conductors
- Mounted onto the Krone support frame between two IDC blocks

Part Number	Description
R3286111	SMART Voice Block, 20, Krone, PVMax
R3286113	SMART Voice Block, 16, Krone, PVMax

VoicelT

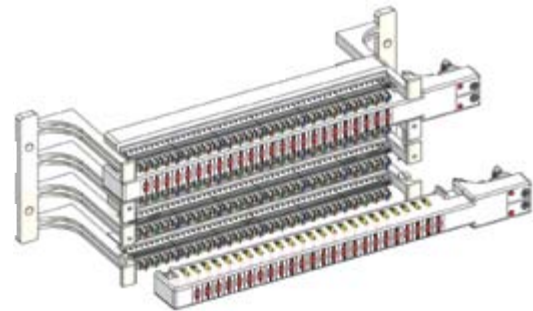


Features

- Meets Category 3 specifications
- 100 pair Wiring Blocks
- Accomodates 22-26 AWG solid and stranded wires
- Economical, high-density design
- Color-coded pairs on connecting blocks
- Wiring blocks with stand-off feet for wall mounting and rear cable routing available
- Write-on identification labels

Part Number	Description
VIT110 Wiring Blocks (Products are packaged individually in a polybag)	
R3029030	VT110 Wiring Block, 100 Pairs, with legs
R3029031	VT110 Wiring Block, 100 Pairs
VIT110 Connecting Blocks (Products are packaged ten per polybag)	
R3029093	VT110 Connecting Block, 3 Pairs
R3029094	VT110 Connecting Block, 4 Pairs
R3029095	VT110 Connecting Block, 5 Pairs
VIT110 Cable Management (Products are packaged individually in a polybag)	
R3029000	VT110 Cable Management Trough, with legs
R3029001	VT110 Cable Management Trough
Complementary Products and Accessories	
R3029099	VT110 Lable Holder (Packaged six per polybag)
R3029080	VT110 Insert Label, White

SMART 110 Voice Blocks



Features

- Used as an enhancement to connect to the PatchView™ system
- Offer the ability to scan and monitor multi-pair cabling protocols based on 110Voice Block
- Easy and simple installation
- Mounted onto the rack VIT 110 Wiring Block between the two rows

Part Number	Description
R3286211	SMART Voice Block 110, 24, PVMax
R3286212	SMART Voice Block 110, 48, PVMax

Patch Cord Organizers



Features

- Mounted on standard 19" racks or cabinets
- 1U or 2U models are available
- Special design of the brackets for easy mounting and removing of the cords
- The brackets are available in two depths - 55mm and 102mm
- Special mode includes a central opening with brush-like hairs to pass the cords to the back of the rack

Part Number	Description
R3735061	Patch Cord Organizer, 102mm, 1U
R3735062	Patch Cord Organizer, 102mm, 2U
R3735065	Patch Cord Organizer, 1U, Brush
R3735066	Patch Cord Organizer, 55mm, 1U
R3735067	Patch Cord Organizer, 55mm, 2U

Patch Panels for Copper Cabling



Termination Tools

110 Block Termination Tool

The 110 Block Termination Tool terminates 22 to 26 AWG wires on 110 blocks. The tool is spring-loaded and fully adjustable.



Part Number	Description
R3735011	110 Block Termination Tool

Krone Block Termination Tool

The Krone Block Termination Tool terminates 22 to 26 AWG wires on LSA-PLUS block models. The tool is spring-loaded and has an integrated extractor hook and screwdriver.



Part Number	Description
R3735010	Krone Block Termination Tool

Communication Outlets for Copper Cabling



RiT offers a full range of communication outlets, meeting premise wiring standards for North America, Latin America, Europe, Asia and Africa. SMARTen™ models feature Category 6A performance for 10 Giga, advanced SMART CLASSix™ models feature Category 6 performance and SMART Giga™ models feature Enhanced Category 5 performance.

Communication outlets for copper cabling are available in shielded and unshielded designs. This comprehensive line includes surface mount designs, external wall boxes and a variety of keystone-type outlets.

Section 4.2

SMARTen Keystone Jack UTP Connecting Hardware	64
SMARTen Keystone Jack STP Connecting Hardware	65
SMARTen Modular UTP Keystone	66
SMARTen Modular STP Keystone	67
CLASSix Keystone Jack UTP	68
CLASSix Keystone Jack STP	69
CLASSix Keystone Tool-Less Jacks	70
Giga Keystone Jacks	71
Sloped Faceplate & Wall Box	72
European Keystone-Type Wall Outlets	73
American Keystone-Type Faceplates	75
Flash Communication Outlets	76
Adaplast Outlet Insert	77
Gewiss Outlet Insert	78
Beticino Outlet Insert	79

Communication Outlets for Copper Cabling

SMARTen Keystone Jack UTP Connecting Hardware



Features

- Compact design, supports 24 keystones in 1 row, 1U
- High performance supports Category 6A performance specifications up to 500 MHz
- Supports Category 6A UTP environment
- Conforms to ANSI/TIA/EIA-568-C.2, ISO/IEC 11801 2nd edition and CENELEC EN50173 for Category 6A/CLASS E_A
- Simple labor-saving termination using standard 110 Block and Krone termination tools
- Supports solid or stranded 22-26 AWG wires
- Simple assembly and installation for reliable performance
- Compatible with a variety of international faceplates and patch panels, as per IEC 60603-7

Part Number	Description
R3110572	SMARTen Jack, UTP, B&K, Black, Connecting Hardware

Communication Outlets for Copper Cabling

SMARTen Keystone Jack STP Connecting Hardware



Features

- Compact design, supports 24 keystones in 1 row, 1U
- High performance supports Category 6A performance specifications up to 500 MHz
- Conforms to ANSI/TIA/EIA-568-C.2, ISO/IEC 11801 2nd edition and CENELEC EN50173 for Category 6A/CLASS E_A
- Simple labor-saving termination using standard 110 Block termination and Krone tools
- Supports solid or stranded 22-26 AWG wires
- Simple assembly and installation for reliable performance
- Compatible with a variety of international faceplates and patch panels, as per IEC 60603-7

Part Number	Description
R3110582	SMARTen Jack, STP, B&K, Black, Connecting Hardware

Communication Outlets for Copper Cabling

SMARTen Modular UTP Keystone



Features

- Compact design, supports 24 keystones in 1 row, 1U
- High performance supports Category 6A performance specifications up to 500 MHz
- Conforms to ANSI/TIA/EIA-568-C.2, ISO/IEC 11801 2nd edition and CENELEC EN50173 for Category 6A/CLASS E_A channel requirements
- Simple labor-saving termination using standard 110 Block and Krone termination tools
- Supports solid or stranded 22-26 AWG wires
- Adjustable Alien Cross-Talk protective
- Simple assembly and installation for reliable performance
- Compatible with a variety of international faceplates and patch panels, as per IEC 60603-7

Part Number	Description
R3110472	SMARTen Modular UTP Keystone, Black

Communication Outlets for Copper Cabling

SMARTen Modular STP Keystone



Features

- Compact design, supports 24 keystones in 1 row, 1U
- High performance supports Category 6A performance specifications up to 500 MHz
- Conforms to ANSI/TIA/EIA-568-C.2, ISO/IEC 11801 2nd edition and CENELEC EN50173 for Category 6A/CLASS E_A channel requirements
- Simple labor-saving termination using standard 110 Block and Krone termination tools
- Supports solid or stranded 22-26 AWG wires
- Adjustable protective strain relief
- Simple assembly and installation for reliable performance
- Compatible with a variety of international faceplates and patch panels, as per IEC 60603-7

Part Number	Description
R3110482	SMARTen Modular STP Keystone, Black

Communication Outlets for Copper Cabling

Communication Outlets for Copper Cabling

CLASSix Keystone Jack UTP



Features

- Compact design, supports 24 keystones in 1 row, 1U
- Conforms to ANSI/TIA/EIA-568-C.2, ISO/IEC 11801 2nd edition and CENELEC EN50173 for Category 6/CLASS E
- Simple labor-saving termination using standard 110 Block and Krone termination tools
- Supports solid or stranded 22-26 AWG wires
- Adjustable protective strain relief
- Simple assembly and installation for reliable performance
- Compatible with a variety of international faceplates and patch panels, as per IEC 60603-7

Part Number	Description
R3110372	CLASSix Keystone Jack, UTP, B&K, Black

CLASSix Keystone Jack STP



Features

- Compact design, supports 24 keystones in 1 row, 1U
- Conforms to ANSI/TIA/EIA-568-C.2, ISO/IEC 11801 2nd edition and CENELEC EN50173 for Category 6/CLASS E
- Simple labor-saving termination using standard 110 Block and Krone termination tools
- Supports solid or stranded 22-26 AWG wires
- Adjustable protective strain relief
- Simple assembly and installation for reliable performance
- Compatible with a variety of international faceplates and patch panels, as per IEC 60603-7

Part Number	Description
R3110382	CLASSix Keystone Jack, STP, B&K, Black

Communication Outlets for Copper Cabling

CLASSix Keystone Tool-Less Jacks



Features

- STP and UTP designs
- Tool-less termination for UTP & STP models
- Conform to ANSI/TIA/EIA-568-C.2, ISO/IEC 11801 2nd edition and CENELEC EN50173 for Category 6/CLASS E
- Simple assembly and installation for reliable performance
- Compatible with a variety of international faceplates and patch panels, as per IEC 60603-7

Part Number	Description
R3010352	CLASSix Keystone Modular Jack, UTP, Tool-Less, Black
R3010362	CLASSix Keystone Modular Jack, STP, Tool-Less, Black

Communication Outlets for Copper Cabling

Giga Keystone Jacks



Features

- Compact design, support 24 keystones in 1 row, 1U
- Shielded and unshielded designs
- Conform to ANSI/TIA/EIA-568-C.2, ISO/IEC 11801 2nd edition and CENELEC EN50173 for Category 5e/CLASS D
- Universal block - 110 & Krone tool compatible
- Support solid or stranded 23-26 AWG wires
- Protective strain relief caps
- Strain relief for STP models
- Simple assembly and installation for reliable performance
- Compatible with a variety of international faceplates and patch panels, as per IEC 60603-7

Part Number	Description
R3010072	Giga Keystone Jack, UTP, B&K, Black
R3010082	Giga Keystone Jack, STP, B&K, Black

Communication Outlets for Copper Cabling

Communication Outlets for Copper Cabling

Sloped Faceplate & Wall Box



Features

- Sloped faceplate design for reducing cable tension and strain, and greatly enhancing cable protection
- Faceplate can be assembled beneath the plaster
- Accommodate two IEC 603-7 and FCC 68.500 standards keystone opening
- Fall-down shutters, allowing to use 1 or 2 keystone jacks
- Simple assembly and cable installation for reliable performance
- Faceplates include write-on identification labels
- Compatible with all new RiT Keystone Jacks and Patch Cords
- Faceplates and Wall box are sold separately

Part Number	Description
R3011520	Sloped Faceplate, Shutters, 2-Ports, 86x86, White
R3011620	Wall Box, 86x86, White

European Keystone-Type Wall Outlets



German Keystone-Type Wall Outlets

German Keystone-Type Wall Outlets are available in both external wall box and faceplate configurations. Write-on identification labels are included for easy service identification. The faceplates have standard 50mm x 50mm openings. A variety of inserts, including a 50 x 50 single-port, a 25 x 50 single-port and a 25 x 50 blank, enable custom configuration of the faceplates. Jack openings feature shutters for dust protection and comply with IEC 603-7 and FCC 68.500 standards.

Products are packaged individually in polybags. Keystone-type jacks must be ordered separately. Please refer to the RiT SMARTen™, SMART CLASSix™ and SMART Giga™ Jack chapters in this section for further information.

French Keystone-Type Wall Outlets

French Keystone-Type Wall Outlets are available in both external wall box and faceplate configurations. External wall boxes include write-on identification labels for easy service identification. The faceplates have standard 45mm x 45mm openings. A variety of inserts, including a 45 x 45 single-port, a 22.5 x 45 single-port and a 22.5 x 45 blank, enable custom configuration of the faceplates. Jack openings feature shutters for dust protection and comply with IEC 603-7 and FCC 68.500 standards.

Products are packaged individually in polybags. Keystone-type jacks must be ordered separately. Please refer to the RiT SMARTen™, SMART CLASSix™ and SMART Giga™ Jack chapters in this section for further information.

Communication Outlets for Copper Cabling



Italian Keystone-Type Faceplate

Italian Keystone-Type Faceplate is available in one model, configurable up to three ports. The Faceplate is supplied with break-away tabs over the ports to increase configuration flexibility. Simply remove a tab when you wish to connect a port. Unused ports are protected from dust until needed. Jack openings comply with IEC 603-7 and FCC 68.500 standards.

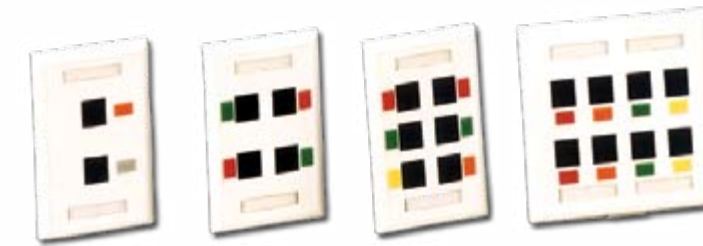
Products are packaged individually in polybags. Keystone-type jacks must be ordered separately. Please refer to the RiT SMARTen™, SMART CLASSix™ and SMART Giga™ Jack chapters in this section for further information. Faceplates include mounting screws.

Part Number	Description
German Keystone-Type Wall Outlets	
R3010400	German Keystone-Type Faceplate, White
R3010510	Insert, German, 50 x 50, 1 Port, White
R3010800	Insert, German, 25 x 50, Blank, White
R3010810	Insert, German, 25 x 50, Shutters, White
French Keystone-Type Wall Outlets	
R3011000	Insert, French, 45 x 45, Shutters, White
R3011100	Insert, French, 22.5 x 45, Shutters, White
R3011120	Insert, French, 22.5 x 45, Blank, White
R3011310	French Keystone-Type Faceplate, White
R3011410	European External Wall Box, White
Italian Keystone-Type Wall Outlets	
R3010630	Italian Keystone-Type Faceplate, 3-Ports, White

Communication Outlets for Copper Cabling



American Keystone-Type Faceplates



Features

- American Keystone-Type Faceplates are available in 2, 4, 6 and 8 port configurations
- Faceplate jack openings comply with IEC 603-7 and FCC 68.500 standards
- Blank port inserts are available
- Faceplates include write-on identification labels and spaces for optional snap-in color service identification tabs, for easy identification of ports

Part Number	Description
American Keystone-Type Faceplates	
R3010220	American Keystone-Type Faceplates, 2-Ports, White
R3010240	American Keystone-Type Faceplates, 4-Ports, White
R3010260	American Keystone-Type Faceplates, 6-Ports, White
R3010280	American Keystone-Type Faceplates, 8-Ports, White
R3010910	Blank Insert for American Keystone-Type Faceplates, White
Snap-In Identification Icons	
R3010900	Snap-In Icon, White
R3010901	Snap-In Icon, Ivory
R3010902	Snap-In Icon, Red
R3010903	Snap-In Icon, Grey
R3010904	Snap-In Icon, Blue
R3010905	Snap-In Icon, Green
R3010906	Snap-In Icon, Yellow

Communication Outlets for Copper Cabling

Communication Outlets for Copper Cabling

Flash Communication Outlets



Features

- Low profile, surface mount design
- Vertical drop cable entry dramatically reduces cable tension and strain, and enhances cable protection
- Accommodate two IEC 603-7 and FCC 68.500 standards keystone opening
- Compatible with all new RiT Keystone Jacks and Patch Cords
- Snap-on cover, no visible screws
- Models incorporating RiT SMARTen™, SMART CLASSix™ and SMART Giga™ Jacks

Part Number	Description
R4180020	Casing, Flash, 2-Ports, White
R3012201	Blank Insert, Flash Box, White

Adaplast Outlet Insert



Features

- Compatible with Adaplast outlets
- Jack openings comply with IEC 603-7 and FCC 68.500 standards
- Supports blank port inserts
- White color
- Conforms to UL 94V-0
- Dimensions (WxH): 23 mm x 45 mm

Part Number	Description
R3011710	Adaplast Outlet Insert

Communication Outlets for Copper Cabling

Communication Outlets for Copper Cabling

Gewiss Outlet Insert



Features

- Compatible with Gewiss outlets
- Jack openings comply with IEC 603-7 and FCC 68.500 standards
- Supports blank port inserts
- White color
- Conforms to UL 94V-0
- Dimensions (WxH): 22 mm x 44 mm

Part Number	Description
R3011810	Gewiss Outlet Insert

Beticino Outlet Insert



Features

- Compatible with Beticino outlets
- Jack openings comply with IEC 603-7 and FCC 68.500 standards
- Supports blank port inserts
- White color
- Conforms to UL 94V-0
- Dimensions (WxH): 22 mm x 44 mm

Part Number	Description
R3011910	Beticino Outlet Insert

Cables for Copper Cabling



When it comes to implementing physical network connectivity, RiT offers a variety of cables. Choose from UTP, FTP and STP horizontal cables and flexible patch cables.

RiT offers a full range of Category 6A SMARTen for 10 Giga, Category 6 CLASSix cables and Enhanced Category 5 Giga cables, supporting protocols running at up to 1,000 Mbps, and Category 7 cables for STP environments.



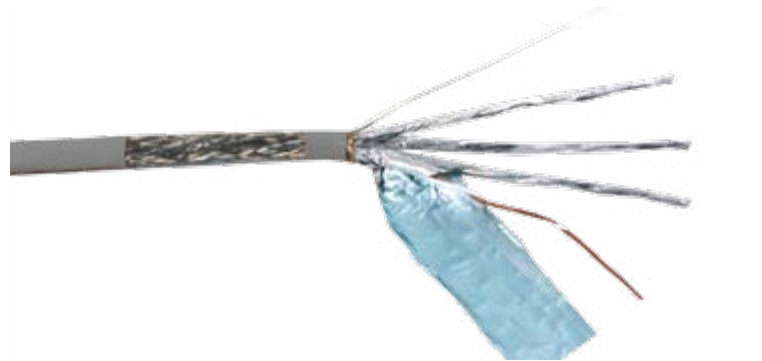
Section 4.3

Category 7 STP Horizontal Cables	82
SMARTen U/FTP Horizontal Cables	83
SMARTen U/FTP Un-Grounded Horizontal Cables	84
SMARTen U/FTP Un-Grounded Patch Cable	85
SMARTen U/FTP Un-Grounded Jumper Cable	86
SMARTen STP Patch Cable	87
SMARTen STP Jumper Cable	88
CLASSix UTP Horizontal Cable	89
CLASSix U/FTP Horizontal Cables	90
CLASSix STP Horizontal Cables	91
CLASSix UTP Patch Cable	92
CLASSix UTP SMART Jumper Cables	93
CLASSix STP Patch Cable	94
CLASSix STP SMART Jumper Cable	95
Giga UTP Horizontal Cables	96
Giga F/UTP Horizontal Cables	97
Giga S/FTP Horizontal Cables	98
Giga UTP Patch Cable	99
Giga UTP SMART Jumper Cable	100
Category 5 UTP Vertical Cable – 25 Pairs	101
Category 5 UTP Vertical Cable – 50 Pairs	102

Cables for Copper Cabling

Cables for Copper Cabling

Category 7 STP Horizontal Cables



Features

- 100 ohm, foiled and shielded horizontal cable
- Four individually foiled twisted pairs with an overall braid-shield
- Conductor size: 23 AWG
- High performance, designed to support protocols running at up to IEEE 802.3an 10Gbps, 1000 Mbps, such as ATM 622 Mbps and Gigabit Ethernet
- Specified up to 600 MHz
- Conform to Category 7 cables, specification as per IEC 61156-5 standard
- Halogen-free, flame-retardant (HFFR) or PVC jacket

Part Number	Description
R3729040	Category 7 STP Horizontal Cable, HFFR, 500m, Reel
R3729041	Category 7 STP Horizontal Cable, HFFR, 1000m, Reel
R3729140	Category 7 STP Horizontal Cable, PVC, 500m, Reel
R3729141	Category 7 STP Horizontal Cable, PVC, 1000m, Reel

SMARTen U/FTP Horizontal Cables



Features

- 100-ohm, U/FTP horizontal cable
- Four individually twisted pairs wrapped with a polyester-aluminum foil
- Conductor size: 23 AWG
- High performance, supportable bandwidth up to 500 MHz according to IEEE 802.3an 10Gbps
- Specified up to 500 MHz
- Conform to ANSI/TIA/EIA-568-C.2, ISO/IEC 11801 2nd edition and CENELEC EN50173 for Category 6A/CLASS E_A
- Backward compatible with Category 5e and Category 6 cabling standards
- Low-Smoke, Zero Halogen (LSZH) or PVC jacket

Part Number	Description
R3726030	SMARTen U/FTP Horizontal Cable, LSZH, 500m Reel
R3726130	SMARTen U/FTP Horizontal Cable, PVC, 500m Reel

Cables for Copper Cabling

Cables for Copper Cabling

SMARTen U/FTP Un-Grounded Horizontal Cables



Features

- 100-ohm, ungrounded foiled horizontal cable
- Four individually twisted pairs wrapped with a polyester-aluminum foil, aluminum face inside
- Conductor size: 23 AWG
- High performance, supportable bandwidth up to 500 MHz according to IEEE 802.3an 10Gbps
- Specified up to 500 MHz
- Conform to ANSI/TIA/EIA-568-C.2, ISO/IEC 11801 2nd edition and CENELEC EN50173 for Category 6A/CLASS E_A
- Backward compatible with Category 5e and Category 6 cabling standards
- Low-Smoke, Zero Halogen (LSZH) or PVC jacket

Part Number	Description
R3726020	SMARTen U/FTP Un-Grounded Horizontal Cable, LSZH, 500m Reel
R3726120	SMARTen U/FTP Un-Grounded Horizontal Cable, LSZH, 500m Reel

SMARTen U/FTP Un-Grounded Patch Cable



Features

- 100 ohm, ungrounded foiled patch cable
- Four individually twisted pairs wrapped with a polyester-aluminum foil, aluminum face inside
- Conductor size: 26 AWG
- High performance, supportable bandwidth up to 500 MHz according to IEEE 802.3an 10Gbps
- Specified up to 500 MHz
- Conforms to ANSI/TIA/EIA-568-C.2, ISO/IEC 11801 2nd edition and CENELEC EN50173 for Category 6A/CLASS E_A

Part Number	Description
R3266000	SMARTen U/FTP Un-Grounded Patch Cable, LSZH, 300m Reel

Cables for Copper Cabling

Cables for Copper Cabling

SMARTen U/FTP Un-Grounded Jumper Cable

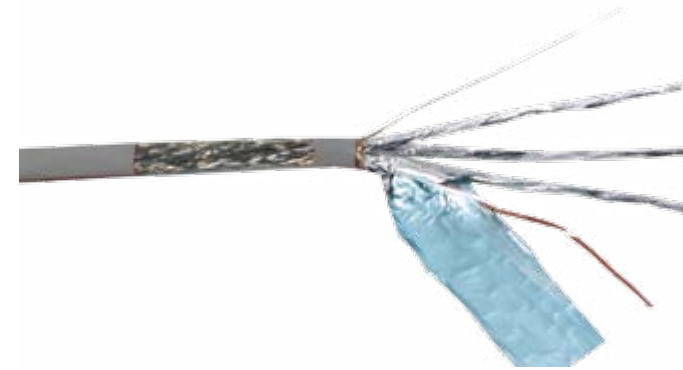


Features

- 100 ohm, ungrounded foiled jumper cable
- Four individually twisted pairs 26 AWG stranded base copper wrapped with a polyester-aluminum foil, aluminum face inside, and an additional 26 AWG control wire at the center of the cable for PatchView applications
- High performance, supportable bandwidth up to 500 MHz according to IEEE 802.3an 10Gbps
- Specified up to 500 MHz
- Conforms to ANSI/TIA/EIA-568-C.2, ISO/IEC 11801 2nd edition and CENELEC EN50173 for Category 6A/CLASS E_A

Part Number	Description
R3265000	SMARTen U/FTP Un-Grounded Jumper Cable, LSZH, 300m Reel

SMARTen STP Patch Cable



Features

- 100 ohm, foiled and shielded patch cable
- Four individually foiled twisted pairs with an overall braid-shield
- Conductor size: 26 AWG
- High performance, supportable bandwidth up to 500 MHz according to IEEE 802.3an 10Gbps
- Specified up to 500 MHz
- Conforms to ANSI/TIA/EIA-568-C.2, ISO/IEC 11801 2nd edition and CENELEC EN50173 for Category 6A/CLASS E_A

Part Number	Description
R3268000	SMARTen STP Patch Cable, LSZH, 300 Reel

Cables for Copper Cabling

Cables for Copper Cabling

SMARTen STP Jumper Cable

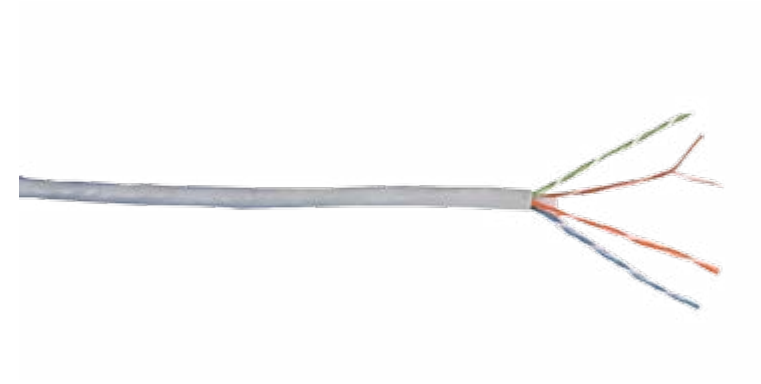


Features

- 100 ohm, foiled and shielded jumper cable
- Four individually foiled twisted pairs 26 AWG stranded bare copper and an additional 26 AWG control wire in the center of the cable for PatchView™ applications, with an overall braid-shield
- High performance, supportable bandwidth up to 500 MHz according to IEEE 802.3an 10Gbps
- Specified up to 500 MHz
- Conforms to ANSI/TIA/EIA-568-C.2, ISO/IEC 11801 2nd edition and CENELEC EN50173 for Category 6A/CLASS E_A

Part Number	Description
R3267000	SMARTen STP Jumper Cable, LSZH, 300 Reel

CLASSix UTP Horizontal Cable



Features

- 100 ohm flexible horizontal UTP cable
- Four twisted pairs
- Conductor size: 23 AWG
- High performance, designed for ATM 622 Mbps and Gigabit Ethernet 1000 Mbps applications
- Specified up to 250 MHz
- Conforms to ANSI/TIA/EIA-568-C.2, ISO/IEC 11801 2nd edition and CENELEC EN50173 for Category 6/CLASS E
- Halogen-Free, Flame-Retardant (HFFR) or PVC jacket
- Available in easy-pull, ready-to-use box

Part Number	Description
R3729070	CLASSix UTP Horizontal Cable, HFFR, 500m Reel
R3729071	CLASSix UTP Horizontal Cable, HFFR, 1000m Reel
R3729072	CLASSix UTP Horizontal Cable, HFFR, 305m Box
R3729170	CLASSix UTP Horizontal Cable, PVC, 500m Reel
R3729171	CLASSix UTP Horizontal Cable, HFFR, 1000m Reel
R3729172	CLASSix UTP Horizontal Cable, PVC, 305m Box

Cables for Copper Cabling

Cables for Copper Cabling

CLASSix U/FTP Horizontal Cables



Features

- 100 ohm U/FTP horizontal cable
- Four individually foiled twisted pairs
- Conductor size: 23 AWG
- High performance, designed for ATM 622 Mbps and Gigabit Ethernet 1000 Mbps applications
- Specified up to 250 MHz
- Conform to ANSI/TIA/EIA-568-C.2, ISO/IEC 11801 2nd edition and CENELEC EN50173 for Category 6/CLASS E
- Halogen Free, Flame Retardant (HFFR) or PVC jacket

Part Number	Description
R3729060	CLASSix U/FTP Horizontal Cable, HFFR, 500m Reel
R3729160	CLASSix U/FTP Horizontal Cable, PVC, 500m Reel

CLASSix STP Horizontal Cables



Features

- 100 ohm foiled and shielded horizontal cable
- Four individually foiled twisted pairs with an overall braid-shield
- Conductor size: 23 AWG
- High performance, designed for ATM 622 Mbps and Gigabit Ethernet 1,000 Mbps applications
- Specified up to 250 MHz
- Conform to ANSI/TIA/EIA-568-C.2, ISO/IEC 11801 2nd edition and CENELEC EN50173 for Category 6/CLASS E
- Halogen-Free, Flame-Retardant (HFFR) or PVC jacket

Part Number	Description
R3726000	CLASSix STP Horizontal Cable, HFFR, 500m Reel
R3726001	CLASSix STP Horizontal Cable, HFFR, 1000m Reel
R3726100	CLASSix STP Horizontal Cable, PVC, 500m Reel
R3726101	CLASSix STP Horizontal Cable, PVC, 1000m Reel

Cables for Copper Cabling

Cables for Copper Cabling

CLASSix UTP Patch Cable

SMART
CLASSix
WARRANTY

CAT-6



Features

- 100 ohm flexible UTP Patch Cable
- Four twisted pairs
- Conductor size: 24 AWG
- High performance, designed for ATM 622 Mbps and Gigabit Ethernet 1000 Mbps applications
- Specified up to 250 MHz
- Conforms to ANSI/TIA/EIA-568-C.2, ISO/IEC 11801 2nd edition and CENELEC EN50173 for Category 6/CLASS E

Part Number	Description
R3229000	CLASSix UTP Patch Cable, PVC, 300m Reel

CLASSix UTP SMART Jumper Cables

SMART
CLASSix
WARRANTY

CAT-6



Features

- 100 ohm flexible UTP Jumper Cable
- Four twisted pairs 24 AWG stranded bare copper with an additional 26 AWG control wire in the center of the cable for PatchView™ applications
- High performance, designed for ATM 622 Mbps and Gigabit Ethernet 1000 Mbps applications
- Specified up to 250 MHz
- Conform to ANSI/TIA/EIA-568-C.2, ISO/IEC 11801 2nd edition and CENELEC EN50173 for Category 6/CLASS E

Part Number	Description
R3228000	CLASSix UTP SMART Jumper Cable, PVC, 300m Reel
R3273000	CLASSix UTP SMART Jumper Cable, HFFR, 300m Reel

Cables for Copper Cabling

Cables for Copper Cabling

CLASSix STP Patch Cable



Features

- 100 ohm foiled and shielded Patch Cable
- Four individually foiled twisted pairs with an overall braid-shield
- Conductor size: 26 AWG
- High performance, designed for ATM 622 Mbps, and Gigabit Ethernet 1000 Mbps applications
- Specified up to 250 MHz
- Conforms to ANSI/TIA/EIA-568-C.2, ISO/IEC 11801 2nd edition and CENELEC EN50173 for Category 6/CLASS E

Part Number	Description
R3257000	CLASSix STP Patch Cable, PVC, 300m Reel

CLASSix STP SMART Jumper Cable



Features

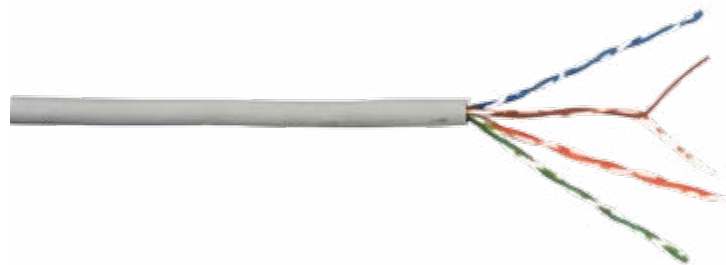
- 100 ohm, foiled and shielded jumper cable
- Four individually foiled twisted pairs 26 AWG stranded bare copper and an additional 26 AWG control wire in the center of the cable for PatchView™ applications, with an overall braid-shield
- High performance, designed for ATM 622 Mbps and Gigabit Ethernet 1,000 Mbps applications
- Specified up to 250 MHz
- Conforms to ANSI/TIA/EIA-568-C.2, ISO/IEC 11801 2nd edition and CENELEC EN50173 for Category 6/CLASS E

Part Number	Description
R3256000	CLASSix STP SMART Jumper Cable, PVC, 300m Reel

Cables for Copper Cabling

Cables for Copper Cabling

Giga UTP Horizontal Cables

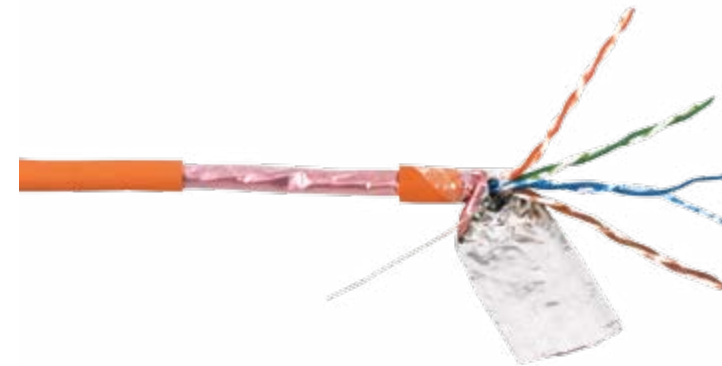


Features

- 100 ohm UTP Horizontal Cable
- Four twisted pairs
- Conductor size: 24 AWG
- High performance, designed for ATM 622 Mbps and Gigabit Ethernet 1000 Mbps applications
- Specified up to 100 MHz
- Conform to ANSI/TIA/EIA-568-C.2, ISO/IEC 11801 2nd edition and CENELEC EN50173 for Category 5e/CLASS D
- Halogen-Free, Flame-Retardant (HFFR) or PVC jacket
- Available in easy-pull, ready-to-use box

Part Number	Description
R3729050	Giga UTP Horizontal Cable, HFFR, 500m Reel
R3729051	Giga UTP Horizontal Cable, HFFR, 1000m Reel
R3729052	Giga UTP Horizontal Cable, HFFR, 305m Box
R3729150	Giga UTP Horizontal Cable, PVC, 500m Reel
R3729151	Giga UTP Horizontal Cable, PVC, 1000m Reel
R3729152	Giga UTP Horizontal Cable, PVC, 305m Box

Giga F/UTP Horizontal Cables



Features

- 100 ohm foiled Horizontal Cable
- Four twisted pairs, with overall foil
- Conductor size: 24 AWG
- Specified up to 100 MHz
- Conform to ANSI/TIA/EIA-568-C.2, ISO/IEC 11801 2nd edition and CENELEC EN50173 for Category 5e/CLASS D
- Halogen-Free, Flame-Retardant (HFFR) or PVC jacket

Part Number	Description
R3729010	Giga FTP Horizontal Cable, HFFR, 500m Reel
R3729011	Giga FTP Horizontal Cable, HFFR, 1000m Reel
R3729110	Giga FTP Horizontal Cable, PVC, 500m Reel
R3729111	Giga FTP Horizontal Cable, PVC, 1000m Reel
R3729112	Giga FTP Horizontal Cable, PVC, 305m Box

Cables for Copper Cabling

Cables for Copper Cabling

Giga S/FTP Horizontal Cables

SMART
GIGA
WARRANTY
CAT-5E



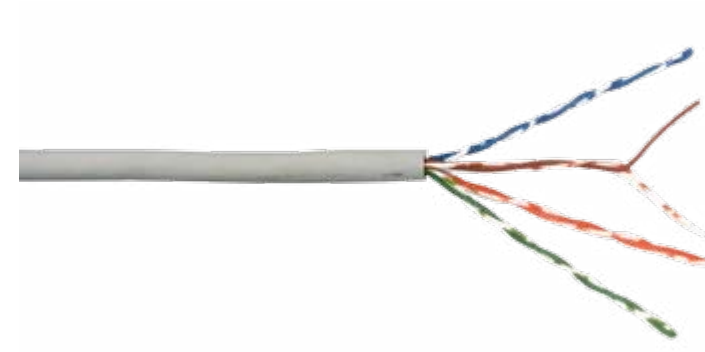
Features

- 100 ohm foiled and braid-shielded Horizontal Cable
- Four twisted pairs, with overall foil and braid shield
- Conductor size: 24 AWG
- Specified up to 100 MHz
- Conform to ANSI/TIA/EIA-568-C.2, ISO/IEC 11801 2nd edition and CENELEC EN50173 for Category 5e/CLASS D
- Halogen-Free, Flame-Retardant (HFFR) or PVC jacket

Part Number	Description
R3729030	Giga SFTP Horizontal Cable, HFFR, 500m Reel
R3729031	Giga SFTP Horizontal Cable, HFFR, 1000m Reel
R3729130	Giga SFTP Horizontal Cable, PVC, 500m Reel
R3729131	Giga SFTP Horizontal Cable, PVC, 1000m Reel

Giga UTP Patch Cable

SMART
GIGA
WARRANTY
CAT-5E



Features

- 100 ohm flexible UTP Patch Cable
- Four twisted pairs
- Conductor size; 24 AWG
- High performance, designed for ATM 622 Mbps and Gigabit Ethernet 1,000 Mbps applications
- Specified up to 100 MHz
- Conforms to ANSI/TIA/EIA-568-C.2, ISO/IEC 11801 2nd edition and CENELEC EN50173 for Category 5e/CLASS D

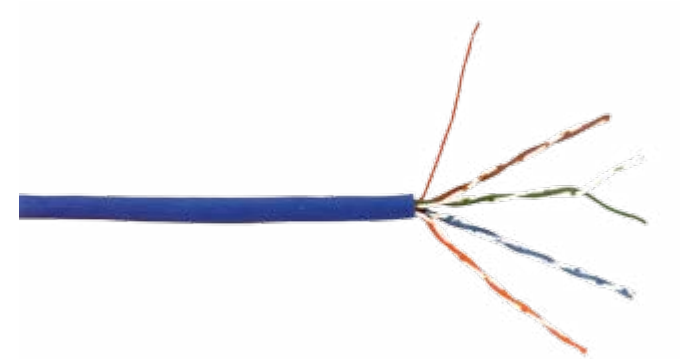
Part Number	Description
R3208000	Giga UTP Patch Cable, PVC, 300m Reel

Cables for Copper Cabling

Cables for Copper Cabling

Giga UTP SMART Jumper Cable

SMART
GIGA
WARRANTY
CAT-5E



Features

- 100 ohm flexible UTP Jumper Cable
- Four twisted pairs 24 AWG stranded bare copper wires and an additional 26 AWG control wire in the center of the cable for PatchView™ applications
- High performance, designed for ATM 622 Mbps and Gigabit Ethernet 1,000 Mbps applications
- Specified up to 100 MHz
- Conforms to ANSI/TIA/EIA-568-C.2, ISO/IEC 11801 2nd edition and CENELEC EN50173 for Category 5e/CLASS D

Part Number	Description
R3206000	Giga UTP SMART Jumper Cable, PVC, 300m Reel

Category 5 UTP Vertical Cable - 25 Pairs

SMART
GIGA
WARRANTY
CAT-5



Features

- 100 ohm vertical UTP cable
- 25 twisted pairs
- Conductor size; 24 AWG
- Conforms to ANSI/TIA/EIA-568-C.2, ISO/IEC 11801 2nd edition and CENELEC EN50173 for Category 5

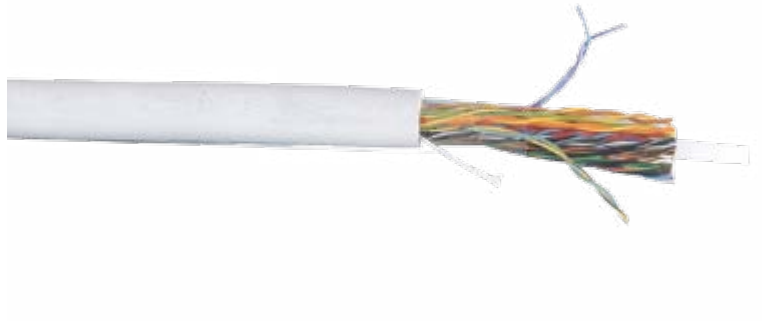
Part Number	Description
R3728120	Category 5 UTP Vertical Cable, 25 Twisted Pairs, PVC, 500m Reel

Cables for Copper Cabling

Category 5 UTP Vertical Cable - 50 Pairs

SMART
GIGA
WARRANTY

CAT-5



Features

- 100 ohm vertical UTP cable
- 50 twisted pairs
- Conductor size; 24 AWG
- Conforms to ANSI/TIA/EIA-568-C.2, ISO/IEC 11801 2nd edition and CENELEC EN50173 for Category 5

Part Number	Description
R3728140	Category 5 UTP Vertical Cable, 50 Twisted Pairs, PVC, 500m Reel

Patch Cords & SMART Jumpers for Copper Cabling



RiT offers a variety of both UTP and STP Patch Cords and SMART Jumpers.

RiT offer a full range of Category 6A SMARTen cords for 10G applications in addition to Category 6 CLASSix cords, Enhanced Category 5 Giga cords, supporting protocols running at up to 1,000 Mbps.

The Patch Cord series also include RiT's unique SMART Jumpers™, which are designed for use with RiT's real-time intelligent infrastructure management (IIM) solution - PatchView™.

Section 4.4

SMARTen UTP Patch Cords	104
SMARTen UTP Jumpers	105
SMARTen UTP ReView Jumpers	106
SMARTen STP Patch Cords	107
SMARTen STP Jumpers	108
SMARTen STP ReView Jumpers	109
CLASSix UTP Patch Cords	110
CLASSix UTP SMART Jumpers	111
CLASSix UTP SMART ReView Jumpers	112
CLASSix STP Patch Cords	113
CLASSix STP SMART Jumpers	114
CLASSix STP SMART ReView Jumpers	115
Giga UTP Patch Cords	116
VoicelT 110 Patch Cords	117
SMART Voice Block 110 Jumpers	118
Color Rings for CLASSix and SMARTen Patch Cords	119

Patch Cords & SMART Jumpers for Copper Cabling

SMARTen UTP Patch Cords



Features

- Patch Cords are used in the work area and cross-connect generic cabling applications
- Comprise a length of eight-wire flexible patch cable, terminated with two eight-position RJ-45 plugs at each end
- Latch protection unique design for preventing cables snagging beneath the plug latch
- Special un-grounded U/FTP Patch Cable for Category 6A UTP environment
- Conforms to ANSI/TIA/EIA-568-C.2, ISO/IEC 11801 2nd edition and CENELEC EN50173 for Category 6A/CLASS E_A
- 100% tested at the factory

Part Number	Description
R3266200	SMARTen UTP Patch Cord, 2.0m
R3266300	SMARTen UTP Patch Cord, 3.0m
R3266500	SMARTen UTP Patch Cord, 5.0m

Patch Cords & SMART Jumpers for Copper Cabling

SMARTen UTP Jumpers



Features

- SMART Jumpers are used in cross-connect PatchView™ applications
- Comprise a length of nine-wire flexible jumper cable, terminated with two nine-pin RJ-45 plugs at the ends
- Special un-grounded U/FTP Jumper cable for Category 6A UTP environment
- Latch protection unique design for preventing cables snagging beneath the plug latch
- Conform to ANSI/TIA/EIA-568-C.2, ISO/IEC 11801 2nd edition and CENELEC EN50173 for Category 6A/CLASS E_A
- 100% tested at the factory

Part Number	Description
R3265200	SMARTen UTP Jumper, 2.0m
R3265300	SMARTen UTP Jumper, 3.0m
R3265500	SMARTen UTP Jumper, 5.0m

Patch Cords & SMART Jumpers for Copper Cabling

SMARTen UTP ReView Jumpers



Features

- SMART ReView Jumpers are used in cross-connect PatchView™ applications
- Comprise a length of nine-wire flexible patch cable, terminated with two nine-pin RJ-45 plugs at the end with an external nine-contact
- Can be used with either internal or external nine-pin connection of RiT SMART PVMMax Patch Panels
- Specifically designed for RiT SMART Keystone Panels and SMART ReView Panels
- Latch protection unique design for preventing cables snagging beneath the plug latch
- Conform to ANSI/TIA/EIA-568-C.2, ISO/IEC 11801 2nd edition and CENELEC EN50173 for Category 6A/CLASS E_A
- 100% tested at the factory

Part Number	Description
R3269200	SMARTen UTP ReView Jumper, 2.0m
R3269300	SMARTen UTP ReView Jumper, 3.0m
R3269500	SMARTen UTP ReView Jumper, 5.0m

Patch Cords & SMART Jumpers for Copper Cabling

SMARTen STP Patch Cords



Features

- Patch Cords are used in the work area and cross-connect generic cabling applications
- Comprise a length of eight-wire flexible patch cable, terminated with two eight-position RJ-45 plugs at each end
- Slim design supporting high density environment
- Latch protection unique design for preventing cables snagging beneath the plug latch
- Conform to ANSI/TIA/EIA-568-C.2, ISO/IEC 11801 2nd edition and CENELEC EN50173 for Category 6A/CLASS E_A
- 100% tested at the factory

Part Number	Description
R3268200	SMARTen STP Patch Cord, 2.0m
R3268300	SMARTen STP Patch Cord, 3.0m
R3268500	SMARTen STP Patch Cord, 5.0m

Patch Cords & SMART Jumpers for Copper Cabling

SMARTen STP Jumpers



Features

- SMART Jumpers are used in cross-connect PatchView™ applications
- Comprise a length of nine-wire flexible jumper cable, terminated with two nine-pin RJ-45 plugs at the ends
- Slim design supporting high density environment
- Latch protection unique design for preventing cables snagging beneath the plug latch
- Conform to ANSI/TIA/EIA-568-C.2, ISO/IEC 11801 2nd edition and CENELEC EN50173 for Category 6A/CLASS E_A
- 100% tested at the factory

Part Number	Description
R3267200	SMARTen STP Jumper, 2.0m
R3267300	SMARTen STP Jumper, 3.0m
R3267500	SMARTen STP Jumper, 5.0m

Patch Cords & SMART Jumpers for Copper Cabling

SMARTen STP ReView Jumpers



Features

- SMART ReView Jumpers are used in cross-connect PatchView™ applications
- A nine-wire flexible patch cable, terminated with two fully shielded RJ-45 plugs at each end with an external nine-contact
- Can be used with either internal or external nine-pin connection of RiT SMART PVMMax Patch Panels
- Specifically designed for RiT SMART Keystone Panels and SMART ReView Panels
- Latch protection unique design for preventing cables snagging beneath the plug latch
- Conform to ANSI/TIA/EIA-568-C.2, ISO/IEC 11801 2nd edition and CENELEC EN50173 for Category 6A/CLASS E_A
- 100% tested at the factory

Part Number	Description
R3270200	SMARTen STP ReView Jumper, 2.0m
R3270300	SMARTen STP ReView Jumper, 3.0m
R3270500	SMARTen STP ReView Jumper, 5.0m

Patch Cords & SMART Jumpers for Copper Cabling

CLASSix UTP Patch Cords



Features

- Patch Cords are used in the work area and cross-connect generic cabling applications
- Comprise a length of eight-wire flexible patch cable, terminated with two eight-position RJ-45 plugs at each end
- Latch protection unique design for preventing cables snagging beneath the plug latch
- Conform to ANSI/TIA/EIA-568-C.2, ISO/IEC 11801 2nd edition and CENELEC EN50173 for Category 6/CLASS E
- 100% tested at the factory

Part Number	Description
R3229100	CLASSix UTP Patch Cord, 1.0m
R3229150	CLASSix UTP Patch Cord, 1.5m
R3229200	CLASSix UTP Patch Cord, 2.0m
R3229300	CLASSix UTP Patch Cord, 3.0m
R3229500	CLASSix UTP Patch Cord, 5.0m

Patch Cords & SMART Jumpers for Copper Cabling

CLASSix UTP SMART Jumpers



Features

- SMART Jumpers are used in cross-connect PatchView™ applications
- Comprise a length of nine-wire flexible jumper cable, terminated with two nine-pin RJ-45 plugs at the ends
- Latch protection unique design for preventing cables snagging beneath the plug latch
- Conform to ANSI/TIA/EIA-568-C.2, ISO/IEC 11801 2nd edition and CENELEC EN50173 for Category 6/CLASS E
- 100% tested at the factory

Part Number	Description
R3228100	CLASSix UTP SMART Jumper, 1.0m
R3228150	CLASSix UTP SMART Jumper, 1.5m
R3228200	CLASSix UTP SMART Jumper, 2.0m
R3228300	CLASSix UTP SMART Jumper, 3.0m
R3228500	CLASSix UTP SMART Jumper, 5.0m

Patch Cords & SMART Jumpers for Copper Cabling

CLASSix UTP SMART ReView Jumpers



Features

- SMART ReView Jumpers are used in cross-connect PatchView™ applications
- Comprise a length of nine-wire flexible jumper cable, terminated with two nine pin RJ-45 plugs at the ends with an external nine-contact
- Can be used with either internal or external nine-pin connection of RiT SMART PVMax Patch Panels
- Specifically designed for RiT SMART Keystone Panels and SMART ReView Panels
- Latch protection unique design for preventing cables snagging beneath the plug latch
- Conform to ANSI/TIA/EIA-568-C.2, ISO/IEC 11801 2nd edition and CENELEC EN50173 for Category 6/CLASS E
- 100% tested at the factory

Part Number	Description
R3282100	CLASSix UTP SMART ReView Jumper, 1.0m
R3282200	CLASSix UTP SMART ReView Jumper, 2.0m
R3282300	CLASSix UTP SMART ReView Jumper, 3.0m
R3282500	CLASSix UTP SMART ReView Jumper, 5.0m

Patch Cords & SMART Jumpers for Copper Cabling

CLASSix STP Patch Cords



Features

- Patch Cords are used in the work area and cross-connect generic cabling applications
- Comprise a length of eight-wire flexible patch cable, terminated with two eight-position RJ-45 plugs at each end
- Latch protection unique design for preventing cables snagging beneath the plug latch
- Conform to ANSI/TIA/EIA-568-C.2, ISO/IEC 11801 2nd edition and CENELEC EN50173 for Category 6/CLASS E
- 100% tested at the factory

Part Number	Description
R3257100	CLASSix STP Patch Cord, 1.0m
R3257150	CLASSix STP Patch Cord, 1.5m
R3257200	CLASSix STP Patch Cord, 2.0m
R3257300	CLASSix STP Patch Cord, 3.0m
R3257500	CLASSix STP Patch Cord, 5.0m

Patch Cords & SMART Jumpers for Copper Cabling

CLASSix STP SMART Jumpers



Features

- SMART Jumpers are used in cross-connect PatchView™ applications
- Comprise a length of nine-wire flexible jumper cable, terminated with two nine-pin RJ-45 plugs at the ends
- Latch protection unique design for preventing cables snagging beneath the plug latch
- Conform to ANSI/TIA/EIA-568-C.2, ISO/IEC 11801 2nd edition and CENELEC EN50173 for Category 6/CLASS E
- 100% tested at the factory

Part Number	Description
R3256100	CLASSix STP SMART Jumper, 1.0m
R3256150	CLASSix STP SMART Jumper, 1.5m
R3256200	CLASSix STP SMART Jumper, 2.0m
R3256300	CLASSix STP SMART Jumper, 3.0m
R3256500	CLASSix STP SMART Jumper, 5.0m

Patch Cords & SMART Jumpers for Copper Cabling

CLASSix STP SMART ReView Jumpers



Features

- SMART ReView Jumpers are used in cross-connect PatchView™ applications
- A nine-wire flexible patch cable, terminated with two fully shielded RJ-45 plugs at each end with an external nine-contact
- Can be used with either internal or external nine-pin connection of RiT SMART PVMMax Patch Panels
- Specifically designed for RiT SMART Keystone Panels and SMART ReView Panels
- Latch protection unique design for preventing cables snagging beneath the plug latch
- Conform to ANSI/TIA/EIA-568-C.2, ISO/IEC 11801 2nd edition and CENELEC EN50173 for Category 6/CLASS E
- 100% tested at the factory

Part Number	Description
R3283100	CLASSix STP SMART ReView Jumper, 1.0m
R3283150	CLASSix STP SMART ReView Jumper, 1.5m
R3283200	CLASSix STP SMART ReView Jumper, 2.0m
R3283300	CLASSix STP SMART ReView Jumper, 3.0m
R3283500	CLASSix STP SMART ReView Jumper, 5.0m

Patch Cords & SMART Jumpers for Copper Cabling

Giga UTP Patch Cords



Features

- Patch Cords are used in the work area and cross-connect generic cabling applications
- Comprise a length of eight-wire flexible patch cable, terminated with two eight-position RJ-45 plugs at each end
- Conform to ANSI/TIA/EIA-568-C.2, ISO/IEC 11801 2nd edition and CENELEC EN50173 for Category 5e/CLASS D

Part Number	Description
R3208100	Giga UTP Patch Cord, Molded, 1.0m
R3208150	Giga UTP Patch Cord, Molded, 1.5m
R3208200	Giga UTP Patch Cord, Molded, 2.0m
R3208300	Giga UTP Patch Cord, Molded, 3.0m
R3208500	Giga UTP Patch Cord, Molded, 5.0m

Patch Cords & SMART Jumpers for Copper Cabling

VoiceIT 110 Patch Cords



Features

- Designed for use with phone systems
- Meet Category 3 specifications
- Patch Cords are used for cross-connect between 110 Blocks
- Two connectivity options: 110-to-110 or 110-to-RJ-45 Patch Cords
- Two cable options: 1 pair or 2 pairs
- Easy and simple installation

Part Number	Description
R3031120	Patch Cord, 110-110, 1 Pair, 2.0m
R3031130	Patch Cord, 110-110, 1 Pair, 3.0m
R3031150	Patch Cord, 110-110, 1 Pair, 5.0m
R3031320	Patch Cord, 110-RJ-45, 1 Pair, 2.0m
R3031330	Patch Cord, 110-RJ-45, 1 Pair, 3.0m
R3031350	Patch Cord, 110-RJ-45, 1 Pair, 5.0m
R3032120	Patch Cord, 110-110, 2 Pair, 2.0m
R3032130	Patch Cord, 110-110, 2 Pair, 3.0m
R3032150	Patch Cord, 110-110, 2 Pair, 5.0m
R3032320	Patch Cord, 110-RJ-45, 2 Pair, 2.0m
R3032330	Patch Cord, 110-RJ-45, 2 Pair, 3.0m
R3032350	Patch Cord, 110-RJ-45, 2 Pair, 5.0m

Patch Cords & SMART Jumpers for Copper Cabling

SMART Voice Block 110 Jumpers



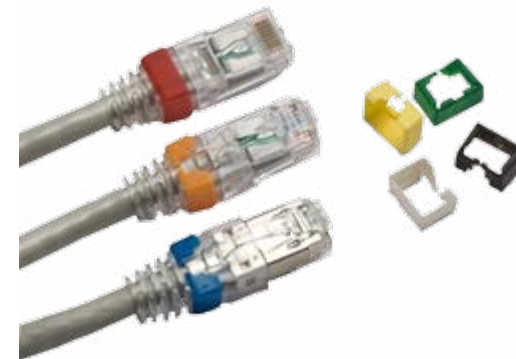
Features

- SMART Jumpers are used in cross-connect PatchView™ applications
- Provide an enhancement for intelligent 110-block solutions
- Offer the ability to scan and monitor multi-pair cabling protocols
- Can be used with an external pin connection
- Two connectivity options: 110-to-110 or 110-to-RJ-45 SMART Jumpers
- Two cable options: 1 pair or 2 pairs
- Easy and simple installation

Part Number	Description
R3033120	SMART Jumper, 110-110, 1 Pair, 2.0m
R3033130	SMART Jumper, 110-110, 1 Pair, 3.0m
R3033150	SMART Jumper, 110-110, 1 Pair, 5.0m
R3033320	SMART Jumper, 110-RJ-45, 1 Pair, 2.0m
R3033330	SMART Jumper, 110-RJ-45, 1 Pair, 3.0m
R3033350	SMART Jumper, 110-RJ-45, 1 Pair, 5.0m
R3034120	SMART Jumper, 110-110, 2 Pair, 2.0m
R3034130	SMART Jumper, 110-110, 2 Pair, 3.0m
R3034150	SMART Jumper, 110-110, 2 Pair, 5.0m
R3034320	SMART Jumper, 110-RJ-45, 2 Pair, 2.0m
R3034330	SMART Jumper, 110-RJ-45, 2 Pair, 3.0m
R3034350	SMART Jumper, 110-RJ-45, 2 Pair, 5.0m

Patch Cords & SMART Jumpers for Copper Cabling

Color Rings for CLASSix and SMARTen Patch Cords



Features

- Flexible Color Rings for Patch Cord designations
- Differentiate a wide range of applications in 6 different colors: Yellow, Gray, Orange, Blue, Green and Red
- Help in reusing patch cords – Green World
- Compatible with all CLASSix and SMARTen Patch Cords and SMART Jumpers, UTP and STP, New Designs
- Plastic rated UL 94V-0
- 100 pieces packed in a plastic bag

Part Number	Description
R3734001	Color Patch Cord Rings, Red
R3734002	Color Patch Cord Rings, Yellow
R3734003	Color Patch Cord Rings, Blue
R3734004	Color Patch Cord Rings, Grey
R3734005	Color Patch Cord Rings, Green
R3734006	Color Patch Cord Rings, Orange

Connectors for Copper Cabling



RiT Technologies offers a line of RJ-45 plugs for UTP and STP modular systems. These are available in 8 or 9 contact arrangements, supporting SMARTen™ Category 6A, SMART CLASSix™ Category 6 and SMART Giga™ Enhanced Category 5 Cabling Systems.



Section 4.5

SMARTen UTP Modular Plugs	122
SMARTen STP Modular Plugs	123
CLASSix UTP Modular Plugs	124
Giga Modular Plugs	125

SMARTen UTP Modular Plugs



Features

- Conform to ANSI/TIA/EIA-568-C.2, ISO/IEC 11801 2nd edition and CENELEC EN50173 for Category 6A/CLASS E_A
- Improved cable retention provides enhanced pull-strength, as well as preventing pair deformation, especially sensitive in 10G applications
- Ultra slim design for high density environments
- Backwards compatible
- Inter-operable
- Field terminatable capability
- Latch protection in order to eliminate digging in high density patch cord installations
- IEC 60603-7 compliant
- Available in 8 and 9 pins for supporting PatchView™ management systems
- Enable termination of 24-26 AWG stranded conductors
- Enable termination of 24 AWG solid conductors
- 50 micron gold plating contacts

Part Number	Description
R3265002	SMARTen RJ-45 Unshielded Plug, 9 pin
R3266002	SMARTen RJ-45 Unshielded Plug, 8 pin
R3269002	SMARTen RJ-45 Unshielded Plug, ReView
R3737005	Hand Termination Tool UTP
R3273006	Die Set, UTP Plug + ReView

SMARTen STP Modular Plugs



Features

- Conform to ANSI/TIA/EIA-568-C.2, ISO/IEC 11801 2nd edition and CENELEC EN50173 for Category 6A/CLASS E_A
- Improved cable retention provides enhanced pull-strength, as well as preventing pair deformation
- Ultra slim design for high density environments
- Backwards compatible
- Field terminatable capability
- Modular boot - supports Patch Cable of 6.5 mm nominal OD
- Latch protection eliminates digging in high density patch cord installations
- IEC 60603-7 compliant
- Available in 8 and 9 pins for supporting PatchView™ management systems
- Enable termination of 24-26 AWG stranded conductors
- Enable termination of 24 AWG solid conductors
- 50 micron gold plating contacts

Part Number	Description
R3268002	SMARTen RJ-45 Shielded Plug, 8 pin
R3267002	SMARTen RJ-45 Shielded Plug, 9 pin
R3270002	SMARTen RJ-45 Shielded Plug, ReView
R3228005	Hand Termination Tool STP + UTP Giga
R3228006	Die Set, STP Plug + ReView
R3207008	Shield Crimping Hand Tool

Connectors for Copper Cabling

Connectors for Copper Cabling

CLASSix UTP Modular Plugs



Features

- Conform to ANSI/TIA/EIA-568-C.2, ISO/IEC 11801 2nd edition and CENELEC EN50173 for Category 6/CLASS E
- Improved cable retention provides enhanced pull-strength, as well as preventing pair deformation
- Ultra slim design for high density environments
- Backwards compatible
- Field terminatable capability
- Latch protection eliminates digging in high density Patch Cord installations
- IEC 60603-7 compliant
- Available in 8 and 9 pins for supporting PatchView™ management systems
- Enable termination of 24-26 AWG stranded conductors
- Enable termination of 24 AWG solid conductors
- 50 micron gold plating contacts

Part Number	Description
R3273002	CLASSix RJ-45 Unshielded Plug, 9 pin
R3274002	CLASSix RJ-45 Unshielded Plug, 8 pin
R3282002	CLASSix RJ-45 Unshielded Plug, 10 pin, ReView
R3737005	Hand Termination Tool UTP
R3273006	Die Set, UTP Plug + ReView

Giga Modular Plug



Features

- Conforms to ANSI/TIA/EIA-568-C.2, ISO/IEC 11801 2nd edition and CENELEC EN50173 for Category 5e/CLASS D
- IEC 60603-7 compliant
- Enables termination of 24-26 AWG stranded conductors
- Enables termination of 24 AWG solid conductors
- Designed for ease of termination and assembly

Part Number	Description
R3208001	Giga RJ-45 Unshielded Plug, 8-Position
R3228005	Hand Termination Tool STP + UTP Giga
R3757006	Die Set Giga UTP

Additional Solutions for Copper Cabling



Section 4.6

SMART Inter-Connect Bar	128
SMART ReView	129

Additional Solutions for Copper Cabling

SMART Inter-Connect Bar



- Cords connected to the switch ports are attached through an opening in the Inter-Connect panels that hold them in place
- Special cords are used with metal connectors that are in touch with the Inter-Connect Panel through additional wire in the cable
- The Inter-Connect system scans the wiring center configuration and reports the connectivity status in real time
- Computerized LEDs guide the technician step-by-step through all moves, adds & changes (MAC)
- Extremely useful for facilitating maintenance in small to large size wiring centers over-congested with Patch Cords
- Simple and fast installation with minimum interference to network operation

Additional Solutions for Copper Cabling

SMART ReView



- The SMART ReView™ Panels are mounted on the installed Patch Panels to integrate the existing installation with the PatchView™ solution
- The SMART ReView system scans the wiring center configuration and reports the connectivity status in real time
- Computerized LEDs guide the technician step-by-step through all moves, adds & changes (MAC)
- Saves the cost of replacing existing Patch Panels and ensures 100% PatchView™ capability
- Different models are available for different Patch Panel types, both copper and fiber optic



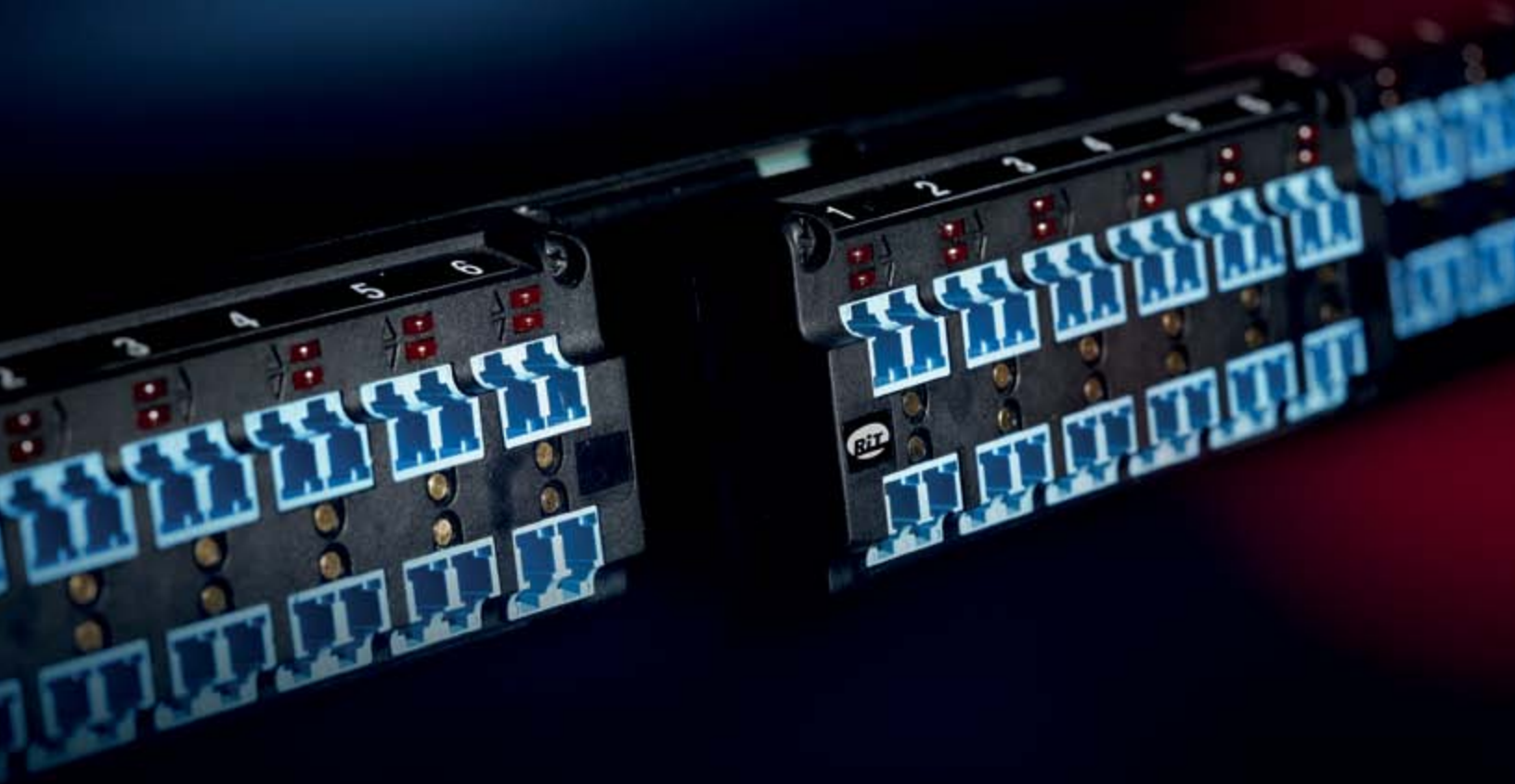
Fiber Optic Solutions

Patch Panels for Fiber Optic Cabling



The RiT line of fiber optic Patch Panels, supporting Single-Mode and Multi-Mode applications, offers a variety of models. In addition, a complete line of accessories for securing, organizing and protecting fusion spliced fibers is available.

Selected Patch Panels are available with or without provisions for attachment to the PatchView™ management system.



Section 5.1

F/O Modular Patch Panel	134
SMART LC 48 Patch Panels	135
SMART LC 96 Cassette Panels	136
SMART LC Cassettes	137
SMART LC 8-8 Patch Panels	138
SMART LC 192 Patch Panels	139
SMART LC-MPO 48 Patch Panels	140
SMART LC-MPO 96 Cassette Panels	141
SMART LC-MPO Cassettes	142
Hybrid Modular Panel	143
F/O SC 24 Patch Panel	144
F/O SC 48 1U Patch Panel	145
SMART SC 48 2U Patch Panels	146
SMART MT-RJ 48 Patch Panel	147
Accessories for Fiber Optic Patch Panels	148

Patch Panels for Fiber Optic Cabling

Patch Panels for Fiber Optic Cabling

F/O Modular Patch Panel

F/O
WARRANTY



Features

- Supports up to 24 Duplex LC adapters (48 fibers) MT-RJ adapters (48 fibers) and Simplex SC adapters (24 fibers) in 1U of rack space
- Pull-out drawer enables ease of access to the fiber
- Wide range of fiber optic cabling management accessories, including 4 fiber management clips and cable entry gland
- Splice Cassettes and grounding kits can be ordered seperately
- Single-Mode and Multi-Mode adapter available
- Configurable rack mounting brackets allow for recessed panel mounting, enhancing cable protection
- Large work area for comfortable installation
- Rear cable entry cutouts including one cable entry gland
- Unused adapter ports are covered by port caps

Part Number	Description
R3196000	F/O Modular Panel, w/o adapters

SMART LC 48 Patch Panels

F/O
WARRANTY



Features

- Support 24 Duplex LC adapters (48 fibers) in 1U of rack space
- Pull-out drawer enables ease of access to the fiber
- Wide range of fiber optic cabling management accessories, including 4 fiber management clips and cable entry gland
- Splice Cassettes and grounding kits can be ordered seperately
- Single-Mode and Multi-Mode adapter available
- Configurable rack mounting brackets allow for recessed panel mounting, enhancing cable protection
- Large work area for comfortable installation
- Rear cable entry cutouts including one cable entry gland
- Innovative SNMP real-time management of patch cord connections with RiT's PatchView™ system

Part Number	Description
R4197004	SMART F/O Panel, 48, LC, MM, PVMMax
R4197014	SMART F/O Panel, 48, LC, SM, PC, PVMMax

Patch Panels for Fiber Optic Cabling

Patch Panels for Fiber Optic Cabling

SMART LC 96 Cassette Panels

F/O
WARRANTY



Features

- Very high density panels, support 48 Duplex LC adapters (96 fibers) in 1U of rack space
- Simple assembly and installation: the cassettes are mounted on the panel individually
- Pre-assembled LC adapters
- Single-Mode and Multi-Mode adapters available
- PatchView™ and non-PatchView options

Part Number	Description
R4196090	SMART F/O Cassette Panel, 96, LC, Chassis w/o Cassette
R4196094	SMART F/O Cassette Panel, 96, LC, Chassis w/o Cassette, PVMMax

SMART LC Cassettes

F/O
WARRANTY



Features

- Comprise 12 Duplex LC adapters, supporting 24 fibers in each cassette
- 4 cassettes fit 1U of rack space
- Single-Mode and Multi-Mode adapters available
- External 20-pin PatchView™ connector makes it a real plug-and-play cassette
- PatchView™ and non-PatchView options

Part Number	Description
R4196100	SMART F/O Cassette, 24, LC, MM
R4196104	SMART F/O Cassette, 24, LC, MM, PVMMax
R4196110	SMART F/O Cassette, 24, LC, SM, PC
R4196114	SMART F/O Cassette, 24, LC, SM, PC, PVMMax

Patch Panels for Fiber Optic Cabling

Patch Panels for Fiber Optic Cabling

SMART LC 8-8 Patch Panels

F/O
WARRANTY



Features

- Support 16 Duplex LC adapters (32 fibers), divided into two groups of 8 adapters in 1U of rack space
- The ultimate solution for managing cross-connect environment in small communication rooms
- A pull-out drawer enables easy access to the fibers
- A wide range of fiber optic cabling management accessories, including 4 fiber management clips and cable entry gland
- Pre-assembled LC adapters
- Splice cassette and cable grounding kits can be ordered separately
- Single-Mode and Multi-Mode adapters available
- Adjustable rack mounting brackets allow for recessed panel mounting, enhancing cable protection
- Large work area for comfortable installation
- Rear cable entry cutouts including one cable entry gland
- Innovative SNMP real-time management of patch cord connections with RiT's PatchView™ system

Part Number	Description
R4197504	SMART F/O Panel, 8-8, LC, MM, PVMMax
R4197514	SMART F/O Panel, 8-8, LC, SM, PC, PVMMax

SMART LC 192 Patch Panels

F/O
WARRANTY



Features

- Support 96 Duplex LC adapters (192 fibers) in 4U of rack space
- Wide range of fiber optic cabling management accessories, including 10 fiber management clips, cable grounding kits and cable entry gland
- Splice cassette and cable grounding kits can be ordered separately
- Pre-assembled LC adapters
- Single-Mode and Multi-Mode adapter options available
- Configurable rack mounting brackets allow for recessed panel mounting, enhancing cable protection
- Large internal panel space for easier installation
- Rear and side cable entry cutouts including one cable entry gland
- External rear header connectors allowing easy connection to RiT's PatchView™ system
- Innovative SNMP real-time management of patch cord connections with RiT's PatchView™ system

Part Number	Description
R4197304	SMART F/O Panel, 192, LC, MM, PVMMax
R4197314	SMART F/O Panel, 192, LC, SM, PC, PVMMax

Patch Panels for Fiber Optic Cabling

SMART LC-MPO 48 Patch Panels



Features

- Comprise 24 Duplex LC adapters at the front and 4 MPO adapters at the back, in 1U of rack space
- Pre-assembled 24 LC adapters, 4 LC-MPO fan-outs (see below for additional polarity information) and 4 MPO adapters
- Full IL and RL test reports are included
- Rear metal MPO protective bracket
- Support Single-Mode and OM3 Multi-Mode applications
- External 14-pin PatchView™ connector offering a real plug-and-play panel
- Configurable rack mounting brackets allow for recessed panel mounting and enhanced cable protection
- PatchView™ and non-PatchView options

Part Number	Description
R4197400	SMART F/O Panel, 48, LC-MPO, OM3
R4197404	SMART F/O Panel, 48, LC-MPO, OM3, PVMMax
R4197410	SMART F/O Panel, 48, LC-MPO, SM, PC
R4197414	SMART F/O Panel, 48, LC-MPO, SM, PC, PVMMax

Patch Panels for Fiber Optic Cabling

SMART LC-MPO 96 Cassette Panels



Features

- Very high density Patch Panels, support 48 Duplex LC adapters (96 fibers) in 1U of rack space
- Simple assembly and installation: the cassettes are mounted to the Panel separately
- Pre-terminated MPO cables are connected directly to the cassettes
- PatchView™ and non-PatchView options

Part Number	Description
R4197690	SMART F/O Cassette Panel, 96, LC-MPO, Chassis w/o Cassette
R4197694	SMART F/O Cassette Panel, 96, LC-MPO, Chassis w/o Cassette, PVMMax

Patch Panels for Fiber Optic Cabling

Patch Panels for Fiber Optic Cabling

SMART LC-MPO Cassettes

F/O
WARRANTY



Features

- Comprise 12 Duplex LC adapters at the front and 2 MPO adapters at the back, supporting 24 fibers in each cassette
- 4 cassettes fit 1U of rack space
- Pre-assembled 12 LC adapters, 2 LC-MPO 12-fiber fan-outs (see below for additional polarity information) and 2 MPO adapters
- Full IL and RL test reports are included
- Rear rubber MPO protective bracket
- External 20-pin PatchView™ connector offers a real plug-and-play cassette
- PatchView™ and non-PatchView options

Part Number	Description
R4197700	SMART F/O Cassette, 24, LC-MPO, OM3
R4197704	SMART F/O Cassette, 24, LC-MPO, OM3, PVMMax
R4197710	SMART F/O Cassette, 24, LC-MPO, SM, PC
R4197714	SMART F/O Cassette, 24, LC-MPO, SM, PC, PVMMax

Hybrid Modular Panel



Features

- Supports up to 24 keystones, 24 Duplex LC adapters (48 fibers), or a mixture of the two, in 1U of rack space
- Different RiT Keystone Jacks may be mixed on the same panel
- Compatible with selected types of RiT Keystone Jacks
- Pull-out drawer enables ease of access to the fiber
- Wide range of fiber optic cabling management accessories, including 4 fiber management clips and one cable entry gland
- Splice cassettes and cable grounding kits can be ordered separately
- Single-Mode and Multi-Mode adapters available
- Configurable rack mounting brackets allow for recessed panel mounting, enhancing cable protection
- Large work area for comfortable installation
- Rear cable entry cutouts
- Port caps can be ordered separately to cover unused ports
- Models incorporating RiT SMARTen Jacks conform to ANSI/TIA/EIA-568-C.2, ISO/IEC 11801 2nd edition and CENELEC EN50173 for Category 6A/CLASS E_A
- Models incorporating RiT CLASSix Jacks conform to ANSI/TIA/EIA-568-C.2, ISO/IEC 11801 2nd edition and CENELEC EN50173 for Category 6/Class E
- Models incorporating RiT Giga Jacks conform to ANSI/TIA/EIA-568-C.2, ISO/IEC 11801 2nd edition and CENELEC EN50173 for Category 5e/Class D

Part Number	Description
R3196200	Hybrid Modular Panel, w/o Adapters

Patch Panels for Fiber Optic Cabling

Patch Panels for Fiber Optic Cabling

F/O SC 24 Patch Panel

F/O
WARRANTY



Features

- Supports up to 12 Duplex SC adapters (24 fibers) in 1U of rack space
- Supports up to 12 Quad LC adapters (48 fibers) in 1U of rack space
- Pull-out drawer enables ease of access to the fiber
- Wide range of fiber optic cabling management accessories, including 4 fiber management clips and cable entry gland
- Splice Cassettes and grounding kits can be ordered separately
- Single-Mode and Multi-Mode adapters available
- Configurable rack mounting brackets allow for recessed panel mounting, enhancing cable protection
- Large work area for comfortable installation
- Rear cable entry cutouts including one cable entry gland
- Unused adapter ports are covered by port caps

Part Number	Description
R3202400	F/O SC 24 Panel, w/o adapters

F/O SC 48 1U Patch Panel

F/O
WARRANTY



Features

- Supports up to 24 Duplex SC adapters (48 fibers) in 1U of rack space
- Supports up to 24 Quad LC adapters (96 fibers) in 1U rack space
- Pull-out drawer enables ease of access to the fiber optic cables
- Wide range of fiber optic cabling management accessories, including 4 fiber management clips and cable entry gland
- Single-Mode and Multi-Mode adapters available
- Splice cassette and cable grounding kits can be ordered separately
- Configurable rack mounting brackets allow for recessed panel mounting, enhancing cable protection
- Large work area for comfortable installation
- Rear cable entry cutouts including one cable entry gland
- Unused adapter ports are covered by port caps

Part Number	Description
R3202500	F/O SC 48 1U Panel, w/o adapters

Patch Panels for Fiber Optic Cabling

Patch Panels for Fiber Optic Cabling

SMART SC 48 2U Patch Panels

F/O
WARRANTY



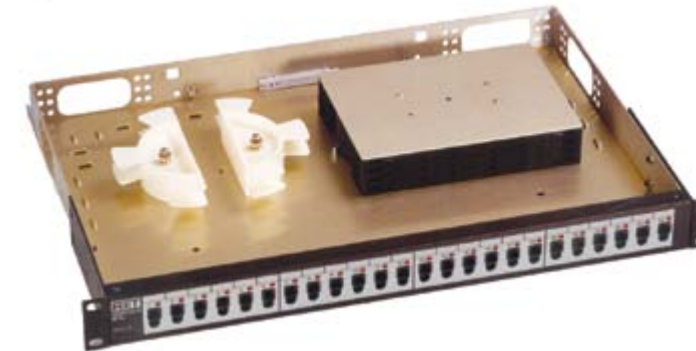
Features

- Support 24 Duplex SC adapters (48 fibers) in 2U rack space
- Wide range of fiber optic cabling management accessories, including 4 fiber management clips and cable entry gland
- Splice Cassettes and grounding kits can be ordered separately
- Pre-assembled SC to SC or SC to ST adapter options.
- Single-Mode or Multi-Mode adapters available
- PC and precision APC adapters for Single-Mode applications
- Pull-out drawer enable ease of access to the fibers
- Configurable rack mounting brackets allow for recessed panel mounting, enhancing cable protection
- Large work area for comfortable installation
- Rear cable entries including one cable entry gland
- Innovative SNMP real-time management of patch cord connections with RiT's PatchView™ system

Part Number	Description
R3202311	SMART F/O Panel, 48, SC-SC, MM, PV
R3202321	SMART F/O Panel, 48, SC-ST, MM, PV
R3202331	SMART F/O Panel, 48, SC-SC, SM, PC, PV
R3202341	SMART F/O Panel, 48, SC-ST, SM, PC, PV
R3202351	SMART F/O Panel, 48, SC-SC, SM, APC, PV

SMART MT-RJ 48 Patch Panel

F/O
WARRANTY



Features

- Supports 24 Duplex MT-RJ adapters (48 fibers) 1U of rack space
- Wide range of fiber optic cabling management accessories, including routing rings, splice cassettes, cable grounding kits, cable entry panels and more can be ordered separately
- Pre-assembled MT-RJ adapters
- Configurable rack mounting brackets allow for recessed panel mounting, enhancing cable protection
- Top cover protects cables from accidental damage and dust
- Large work area for comfortable installation
- Rear and side cable entry cutouts provisions for cable-ties
- Innovative SNMP real-time management of patch cord connections with RiT's PatchView™ system

Part Number	Description
R3197011	SMART F/O Panel, MT-RJ, Cover, PV

Patch Panels for Fiber Optic Cabling

Accessories for Fiber Optic Patch Panels



P/N	Description	F/O Modular Patch Panel	F/O LC 48 Patch Panels	F/O SMART LC 96 Cassette Panel	SMART LC 8-8 Patch Panels	SMART LC 192 Patch Panels	SMART LC MPO 48 Patch Panels
Accessories							
R3203010	Cable Routing Ring Kit (up to 48 fibers)						
R3203015	F/O Cable Ground Kit	x	x	x	x	x	x
R3203016	Cable Entry Panel Kit						
R3203020	Splice Cassette Kit	x	x		x	x	
R3203021	Splice Cassette Expander	x	x		x	x	
R3203023	Protection Sleeve Holder	x	x		x	x	x
R3203027	Fusion Protection Sleeve (100 Units)	x	x	x	x	x	

P/N	Description	SMART LC MPO 96 Cassette Panels	Hybrid Modular Panels	F/O SC 24 Patch Panel	F/O SC 48 1U Patch Pane	SMART SC 48 2U Patch Panels	SMART MT-RJ 48 Patch Panels
Accessories							
R3203010	Cable Routing Ring Kit (up to 48 fibers)						
R3203015	F/O Cable Ground Kit	x	x	x	x	x	x
R3203016	Cable Entry Panel Kit						x
R3203020	Splice Cassette Kit		x	x	x	x	x
R3203021	Splice Cassette Expander		x	x	x	x	x
R3203023	Protection Sleeve Holder		x	x	x	x	x
R3203027	Fusion Protection Sleeve (100 Units)		x	x	x	x	x
R3203034	Cable Entry Gland	x	*	*	*	*	
R3203035	Fiber Management Clip		**	**	**	**	

* One Cable Entry Gland is included in the panel

** Four Fiber Management Clips are included in the panel

Communication Outlets & Adapters for Fiber Optic Cabling



RiT Technologies offers communication outlets for fiber-to-the-desk applications. RiT carries a complete line of fiber optic adapters. LC, SC, MT-RJ and ST adapters are available in Single-Mode and Multi-Mode configurations.

Section 5.2

Sloped LC Faceplate & Wall Box	150
F/O LC Adapters	151
F/O SC Adapters	152
F/O ST Adapters	153
MT-RJ Adapter	154

Communication Outlets & Adapters for Fiber Optic Cabling

Sloped LC Faceplate & Wall Box



Features

- Sloped faceplate design for reducing cable tension and strain, and greatly enhancing cable protection
- Accommodate two IEC 603-7 and FCC 68.500 standards keystone openings
- Fall-down shutters, allowing to use 1 or 2 LC inserts
- Allow to mix copper and fiber in the same outlet
- Simple assembly and cable installation for reliable performance
- Faceplates include write-on identification labels
- Faceplates, Wall box, LC insert and LC adapters are sold separately

Part Number	Description
R3011520	Sloped Faceplate, Shutters, 2-Ports, 86x86, White
R3011620	Wall Box, 86x86, White
R3012010	LC Duplex-RJ45 Insert

Communication Outlets & Adapters for Fiber Optic Cabling

F/O LC Adapters

F/O WARRANTY



Features

- Small Form Factor adapter
 - LC Duplex adapter with a footprint of SC Simplex adapter
 - LC Quad adapter with a footprint of SC Duplex adapter
- Conform to ANSI/TIA/EIA-568-C.3 standard specifications
- High connection density
- High performance Single-Mode and Multi-Mode adapters
- Push-pull coupling for easy insertion and high repeatability
- High system durability, stability and repeatability
- Snap-in locking element ensures high tensile strength
- Multi-Mode applications (sleeve type: Phosphor Bronze, color: Aqua)
 - Insertion Loss < 0.20 dB typical
- Single-Mode applications (sleeve type: Zirconia, color: Blue)
 - Insertion Loss < 0.15 dB typical
 - Return Loss > 28 dB typical

Part Number	Description
R4199004	F/O Adapter, LC-LC, Duplex, OM3, P-Br
R4200003	F/O Adapter, LC-LC, Duplex, SM, PC
R4191001	F/O Adapter, LC-LC, Quad, SM, PC
R4192001	F/O Adapter, LC-LC, Quad, OM3, P-Br

Communication Outlets & Adapters for Fiber Optic Cabling

Communication Outlets & Adapters for Fiber Optic Cabling

F/O SC Adapters

F/O
WARRANTY



Features

- High performance Single-Mode and Multi-Mode adapters
- Conform to ANSI/TIA/EIA 568-C.3 standard specifications
- Push-pull coupling for easy insertion and high repeatability
- High system durability, stability and repeatability
- Simplex or Duplex Adapters are available
- Multi-Mode, Single-Mode PC and Single-Mode APC Adapters are available
- PC and precision APC ferrules for Single-Mode applications
- PC ferrules:
 - Insertion Loss < 0.3 dB typical
 - Return Loss > 26 dB typical
- APC ferrules:
 - Insertion loss < 1 dB typical
 - Return loss > 55 dB typical

Part Number	Description
R4203000	F/O Adapter, SC-SC, Duplex, MM
R4203001	F/O Adapter, ST-SC, Duplex, MM
R4203005	F/O Adapter, SC-SC, Duplex, SM, PC
R4203006	F/O Adapter, SC-SC, Duplex, SM, APC
R4203007	F/O Adapter, ST-SC, Duplex, SM, PC
R4203008	F/O Adapter, SC-SC, Simplex, MM
R4203009	F/O Adapter, SC-SC, Simplex, SM, PC

F/O ST Adapters

F/O
WARRANTY



Features

- High repeatability and low attenuation
- High performance Single-Mode and Multi-Mode adapters
- Low Insertion Loss:
 - Multi-Mode: < 0.34 dB typical
 - Single-Mode: < 0.15 dB typical

Part Number	Description
R3203003	F/O Adapter, ST-ST, Simplex, MM
R3203008	F/O Adapter, ST-ST, Simplex, SM, PC

F/O
WARRANTY



MT-RJ Adapter



Features

- Small Form Factor adapter - with a footprint of SC Simplex adapter
- High connection density
- Snap-in locking elements
- Low Insertion Loss: <math><0.30\text{ dB}</math> typical

Part Number	Description
R420202	F/O Adapter, MT-RJ

Cables for Fiber Optic Cabling



RiT carries a full line of outdoor and indoor fiber optic cables, supporting Single-Mode and Multi-Mode applications. The cables are available with five fiber types – Single-Mode, Multi-Mode 50/125, Multi-Mode 50/125 OM3 Multi Mode 50/125 OM4 and Multi-Mode 62.5/125.

Section 5.3

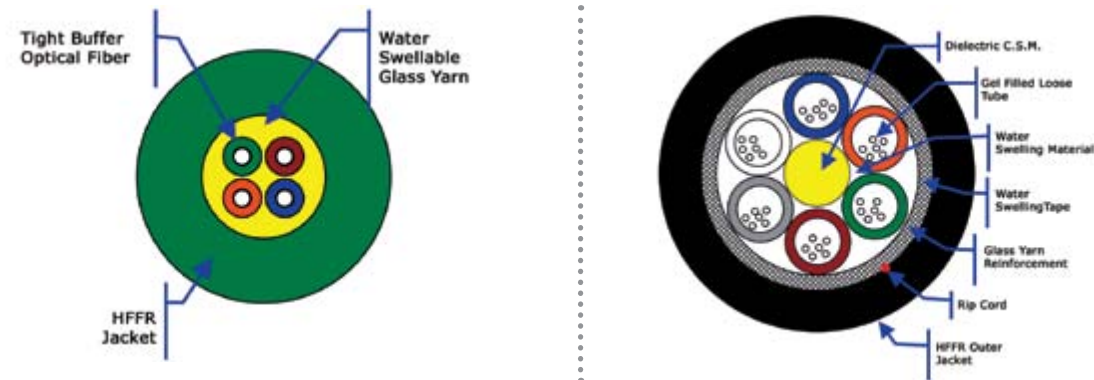
F/O Indoor Glass Yarn Single Loose Tube and Multi Loose Tube Cables	156
F/O Dielectric Armoring Single Loose Tube and Multi Loose Tube Cables	158
F/O Outdoor Corrugated Steel Single Loose Tube and Multi Loose Tube Cables	161
F/O Tight Buffer Cables	164

Cables for Fiber Optic Cabling

Cables for Fiber Optic Cabling

F/O Indoor Glass Yarn Single Loose Tube and Multi Loose Tube Cables

F/O WARRANTY



Features

- Single Loose Tube: a compact loose tube cable contains a single loose tube with up to 12 fibers
- Multi Loose Tube: a loose tube cable with a dielectric central member contains up to 12 tubes, each tube contains up to 12 fibers
- Color coded fibers for easy identification
- Operating temperature range:
Single Loose Tube: -20 - +70°C
Multi Loose Tube: -40 - +70°C
- Water blocking thixotropic gel prevents ingress of water
- Dry water swelling glass yarn for strength and prevention of water penetration
- Available with five fiber types – Single-Mode, Multi-Mode 50/125, Multi-Mode 50/125 OM3, Multi-Mode 50/125 OM4 and Multi-Mode 62.5/125

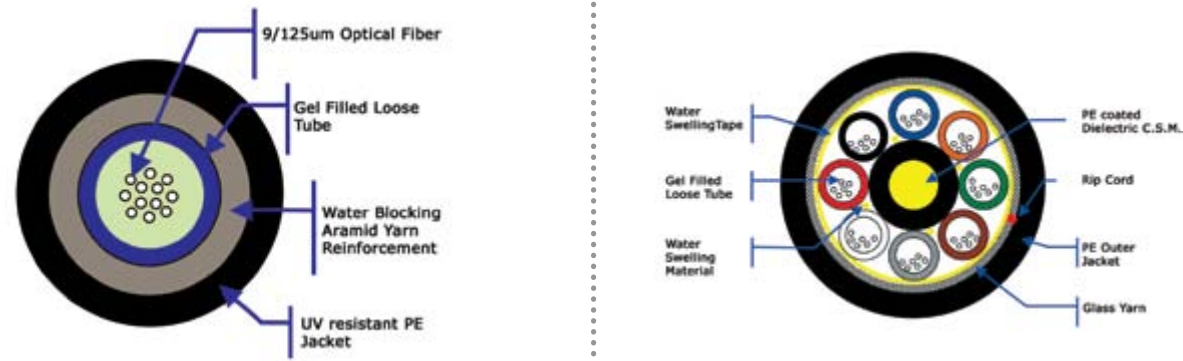
F/O WARRANTY



Part Number	Description
Single Loose Tube	
R2600040	Indoor F/O Cable, Single Loose Tube, MM 62.5, 4 Fibers, Dry Water Blk, Glass Yarn, LSZH
R2600080	Indoor F/O Cable, Single Loose Tube, MM 62.5, 8 Fibers, Dry Water Blk, Glass Yarn, LSZH
R2600120	Indoor F/O Cable, Single Loose Tube, MM 62.5, 12 Fibers, Dry Water Blk, Glass Yarn, LSZH
R2601040	Indoor F/O Cable, Single Loose Tube, SM, 4 Fibers, Dry Water Blk, Glass Yarn, LSZH
R2601080	Indoor F/O Cable, Single Loose Tube, SM, 8 Fibers, Dry Water Blk, Glass Yarn, LSZH
R2601120	Indoor F/O Cable, Single Loose Tube, SM, 12 Fibers, Dry Water Blk, Glass Yarn, LSZH
R2602040	Indoor F/O Cable, Single Loose Tube, MM 50, 4 Fibers, Dry Water Blk, Glass Yarn, LSZH
R2602080	Indoor F/O Cable, Single Loose Tube, MM 50, 8 Fibers, Dry Water Blk, Glass Yarn, LSZH
R2602120	Indoor F/O Cable, Single Loose Tube, MM 50, 12 Fibers, Dry Water Blk, Glass Yarn, LSZH
R2603040	Indoor F/O Cable, Single Loose Tube, MM 50, OM3, 4 Fibers, Dry Water Blk, Glass Yarn, LSZH
R2603080	Indoor F/O Cable, Single Loose Tube, MM 50, OM3, 8 Fibers, Dry Water Blk, Glass Yarn, LSZH
R2603120	Indoor F/O Cable, Single Loose Tube, MM 50, OM3, 12 Fibers, Dry Water Blk, Glass Yarn, LSZH
R2604040	Indoor F/O Cable, Single Loose Tube, MM 50, OM4, 4 Fibers, Dry Water Blk, Glass Yarn, LSZH
R2604080	Indoor F/O Cable, Single Loose Tube, MM 50, OM4, 8 Fibers, Dry Water Blk, Glass Yarn, LSZH
R2604120	Indoor F/O Cable, Single Loose Tube, MM 50, OM4, 12 Fibers, Dry Water Blk, Glass Yarn, LSZH
Multi Loose Tube	
R2610240	Indoor F/O Cable, Multi Loose Tube, MM62.5, 24 Fibers, Dry Water Blk, Glass Yarn, LSZH
R2611240	Indoor F/O Cable, Multi Loose Tube, SM, 24 Fibers, Dry Water Blk, Glass Yarn, LSZH
R2612240	Indoor F/O Cable, Multi Loose Tube, MM 50, 24 Fibers, Dry Water Blk, Glass Yarn, LSZH
R2613240	Indoor F/O Cable, Multi Loose Tube, MM 50, OM3, 24 Fibers, Dry Water Blk, Glass Yarn, LSZH
R2614240	Indoor F/O Cable, Multi Loose Tube, MM 50, OM4, 24 Fibers, Dry Water Blk, Glass Yarn, LSZH

Cables for Fiber Optic Cabling

F/O Dielectric Armoring Single Loose Tube and Multi Loose Tube Cables



Features

- Single Loose Tube: a central loose tube cable with up to 12 optical fibers
- Multi Loose Tube: a loose tube cable with a dielectric central member containing up to 12 tubes, each containing up to 12 fibers
- Color coded fibers for easy identification
- Operating temperature range:
Single Loose Tube: -20 - +70°C
Multi Loose Tube: -40 - +70°C
- Water blocking thixotropic gel prevents ingress of water
- Dry water swelling glass yarn for strength, armoring and prevention of water penetration
- Extra reinforcement strength members
- UV resistant, PE jacket
- Available with five fiber types – Single-Mode 9.3/125, Multi-Mode 50/125, Multi-Mode 50/125 OM3, Multi-Mode 50/125 OM4 and Multi-Mode 62.5/125

Cables for Fiber Optic Cabling



Part Number	Description
Single Loose Tube	
R2600041	Indoor-Outdoor F/O Cable, Single Loose Tube, MM 62.5, 4 Fibers, Dry Water Blk, Dielectric Armor, PE
R2600081	Indoor-Outdoor F/O Cable, Single Loose Tube, MM 62.5, 8 Fibers, Dry Water Blk, Dielectric Armor, PE
R2600121	Indoor-Outdoor F/O Cable, Single Loose Tube, MM 62.5, 12 Fibers, Dry Water Blk, Dielectric Armor, PE
R2601041	Indoor-Outdoor F/O Cable, Single Loose Tube, SM, 4 Fibers, Dry Water Blk, Dielectric Armor, PE
R2601081	Indoor-Outdoor F/O Cable, Single Loose Tube, SM, 8 Fibers, Dry Water Blk, Dielectric Armor, PE
R2601121	Indoor-Outdoor F/O Cable, Single Loose Tube, SM, 12 Fibers, Dry Water Blk, Dielectric Armor, PE
R2602041	Indoor-Outdoor F/O Cable, Single Loose Tube, MM 50, 4 Fibers, Dry Water Blk, Dielectric Armor, PE
R2602081	Indoor-Outdoor F/O Cable, Single Loose Tube, MM 50, 8 Fibers, Dry Water Blk, Dielectric Armor, PE
R2602121	Indoor-Outdoor F/O Cable, Single Loose Tube, MM 50, 12 Fibers, Dry Water Blk, Dielectric Armor, PE
R2603041	Indoor-Outdoor F/O Cable, Single Loose Tube, MM 50, OM3, 4 Fibers, Dry Water Blk, Dielectric Armor, PE
R2603081	Indoor-Outdoor F/O Cable, Single Loose Tube, MM 50, OM3, 8 Fibers, Dry Water Blk, Dielectric Armor, PE
R2603121	Indoor-Outdoor F/O Cable, Single Loose Tube, MM 50, OM3, 12 Fibers, Dry Water Blk, Dielectric Armor, PE
R2604041	Indoor-Outdoor F/O Cable, Single Loose Tube, MM 50, OM4, 4 Fibers, Dry Water Blk, Dielectric Armor, PE
R2604081	Indoor-Outdoor F/O Cable, Single Loose Tube, MM 50, OM4, 8 Fibers, Dry Water Blk, Dielectric Armor, PE
R2604121	Indoor-Outdoor F/O Cable, Single Loose Tube, MM 50, OM4, 12 Fibers, Dry Water Blk, Dielectric Armor, PE
Multi Loose Tube	
R2610041	Indoor-Outdoor F/O Cable, Multi Loose Tube, MM 62.5, 4 Fibers, Dry Water Blk, Dielectric Armor, PE
R2610081	Indoor-Outdoor F/O Cable, Multi Loose Tube, MM 62.5, 8 Fibers, Dry Water Blk, Dielectric Armor, PE
R2610121	Indoor-Outdoor F/O Cable, Multi Loose Tube, MM 62.5, 12 Fibers, Dry Water Blk, Dielectric Armor, PE
R2610241	Indoor-Outdoor F/O Cable, Multi Loose Tube, MM 62.5, 24 Fibers, Dry Water Blk, Dielectric Armor, PE
R2611041	Indoor-Outdoor F/O Cable, Multi Loose Tube, SM, 4 Fibers, Dry Water Blk, Dielectric Armor, PE
R2611081	Indoor-Outdoor F/O Cable, Multi Loose Tube, SM, 8 Fibers, Dry Water Blk, Dielectric Armor, PE

Cables for Fiber Optic Cabling

Part Number	Description
R2611121	Indoor-Outdoor F/O Cable, Multi Loose Tube, SM, 12 Fibers, Dry Water Blk, Dielectric Armor, PE
R2611241	Indoor-Outdoor F/O Cable, Multi Loose Tube, SM, 24 Fibers, Dry Water Blk, Dielectric Armor, PE
R2612041	Indoor-Outdoor F/O Cable, Multi Loose Tube, MM 50, 4 Fibers, Dry Water Blk, Dielectric Armor, PE
R2612081	Indoor-Outdoor F/O Cable, Multi Loose Tube, MM 50, 8 Fibers, Dry Water Blk, Dielectric Armor, PE
R2612121	Indoor-Outdoor F/O Cable, Multi Loose Tube, MM 50, 12 Fibers, Dry Water Blk, Dielectric Armor, PE
R2612241	Indoor-Outdoor F/O Cable, Multi Loose Tube, MM 50, 24 Fibers, Dry Water Blk, Dielectric Armor, PE
R2613041	Indoor-Outdoor F/O Cable, Multi Loose Tube, MM 50, OM3, 4 Fibers, Dry Water Blk, Dielectric Armor, PE
R2613081	Indoor-Outdoor F/O Cable, Multi Loose Tube, MM 50, OM3, 8 Fibers, Dry Water Blk, Dielectric Armor, PE
R2613121	Indoor-Outdoor F/O Cable, Multi Loose Tube, MM 50, OM3, 12 Fibers, Dry Water Blk, Dielectric Armor, PE
R2613241	Indoor-Outdoor F/O Cable, Multi Loose Tube, MM 50, OM3, 24 Fibers, Dry Water Blk, Dielectric Armor, PE
R2614041	Indoor-Outdoor F/O Cable, Multi Loose Tube, MM 50, OM4, 4 Fibers, Dry Water Blk, Dielectric Armor, PE
R2614081	Indoor-Outdoor F/O Cable, Multi Loose Tube, MM 50, OM4, 8 Fibers, Dry Water Blk, Dielectric Armor, PE
R2614121	Indoor-Outdoor F/O Cable, Multi Loose Tube, MM 50, OM4, 12 Fibers, Dry Water Blk, Dielectric Armor, PE
R2614241	Indoor-Outdoor F/O Cable, Multi Loose Tube, MM 50, OM4, 24 Fibers, Dry Water Blk, Dielectric Armor, PE

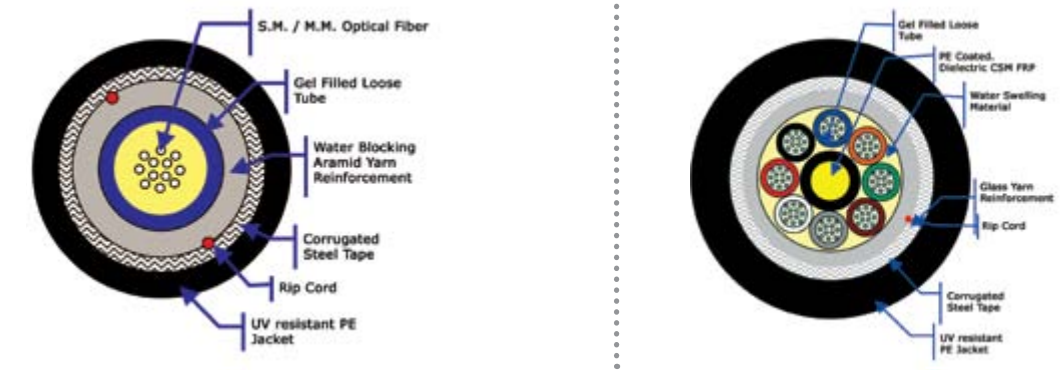
F/O WARRANTY



Cables for Fiber Optic Cabling

F/O Outdoor Corrugated Steel Single Loose Tube and Multi Loose Tube Cables

F/O WARRANTY



Features

- Single Loose Tube: A central loose tube cable with up to 12 fibers
- Multi Loose Tube: A loose tube cable, with a dielectric central member. Contains up to 12 tubes, each tube contains up to 12 fibers
- Color coded fibers for easy identification
- Operating temperature range:
Single Loose Tube: -20 - +70°C
Multi Loose Tube: -40 - +70°C
- Water blocking thixotropic gel prevents ingress of water
- Dry water swelling glass yarn for strength and prevention of water penetration
- Corrugated steel armor
- UV resistant, PE jacket
- Available with five fiber types – Single-Mode, Multi-Mode 50/125, Multi-Mode 50/125 OM3, Multi-Mode 50/125 OM4 and Multi-Mode 62.5/125

Cables for Fiber Optic Cabling

Part Number	Description
Single Loose Tube	
R2600042	Outdoor F/O Cable, Single Loose Tube, MM 62.5, 4 Fibers, Dry Water Blk, Corrugated Steel, PE
R2600082	Outdoor F/O Cable, Single Loose Tube, MM 62.5, 8 Fibers, Dry Water Blk, Corrugated Steel, PE
R2600122	Outdoor F/O Cable, Single Loose Tube, MM 62.5, 12 Fibers, Dry Water Blk, Corrugated Steel, PE
R2601042	Outdoor F/O Cable, Single Loose Tube, SM, 4 Fibers, Dry Water Blk, Corrugated Steel, PE
R2601082	Outdoor F/O Cable, Single Loose Tube, SM, 8 Fibers, Dry Water Blk, Corrugated Steel, PE
R2601122	Outdoor F/O Cable, Single Loose Tube, SM, 12 Fibers, Dry Water Blk, Corrugated Steel, PE
R2602042	Outdoor F/O Cable, Single Loose Tube, MM 50, 4 Fibers, Dry Water Blk, Corrugated Steel, PE
R2602082	Outdoor F/O Cable, Single Loose Tube, MM 50, 8 Fibers, Dry Water Blk, Corrugated Steel, PE
R2602122	Outdoor F/O Cable, Single Loose Tube, MM 50, 12 Fibers, Dry Water Blk, Corrugated Steel, PE
R2603042	Outdoor F/O Cable, Single Loose Tube, MM 50, OM3, 4 Fibers, Dry Water Blk, Corrugated Steel, PE
R2603082	Outdoor F/O Cable, Single Loose Tube, MM 50, OM3, 8 Fibers, Dry Water Blk, Corrugated Steel, PE
R2603122	Outdoor F/O Cable, Single Loose Tube, MM 50, OM3, 12 Fibers, Dry Water Blk, Corrugated Steel, PE
R2604042	Outdoor F/O Cable, Single Loose Tube, MM 50, OM4, 4 Fibers, Dry Water Blk, Corrugated Steel, PE
R2604082	Outdoor F/O Cable, Single Loose Tube, MM 50, OM4, 8 Fibers, Dry Water Blk, Corrugated Steel, PE
R2604122	Outdoor F/O Cable, Single Loose Tube, MM 50, OM4, 12 Fibers, Dry Water Blk, Corrugated Steel, PE



Cables for Fiber Optic Cabling

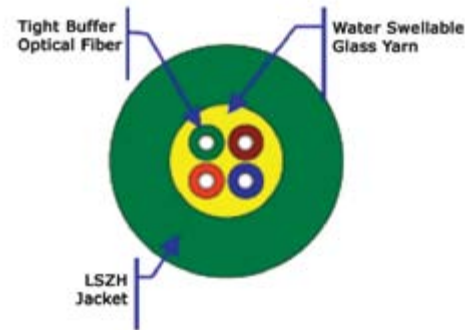
Part Number	Description
Multi Loose Tube	
R2610042	Outdoor F/O Cable, Multi Loose Tube, MM 62.5, 4 Fibers, Dry Water Blk, Corrugated Steel, PE
R2610082	Outdoor F/O Cable, Multi Loose Tube, MM 62.5, 8 Fibers, Dry Water Blk, Corrugated Steel, PE
R2610122	Outdoor F/O Cable, Multi Loose Tube, MM 62.5, 12 Fibers, Dry Water Blk, Corrugated Steel, PE
R2610242	Indoor-Outdoor F/O Cable, Multi Loose Tube, MM 62.5, 24 Fibers, Dry Water Blk, Dielectric Armor, PE
R2611042	Outdoor F/O Cable, Multi Loose Tube, SM, 4 Fibers, Dry Water Blk, Corrugated Steel, PE
R2611082	Outdoor F/O Cable, Multi Loose Tube, SM, 8 Fibers, Dry Water Blk, Corrugated Steel, PE
R2611122	Outdoor F/O Cable, Multi Loose Tube, SM, 12 Fibers, Dry Water Blk, Corrugated Steel, PE
R2611242	Outdoor F/O Cable, Multi Loose Tube, SM, 24 Fibers, Dry Water Blk, Corrugated Steel, PE
R2612042	Outdoor F/O Cable, Multi Loose Tube, MM 50, 4 Fibers, Dry Water Blk, Corrugated Steel, PE
R2612082	Outdoor F/O Cable, Multi Loose Tube, MM 50, 8 Fibers, Dry Water Blk, Corrugated Steel, PE
R2612122	Outdoor F/O Cable, Multi Loose Tube, MM 50, 12 Fibers, Dry Water Blk, Corrugated Steel, PE
R2612242	Outdoor F/O Cable, Multi Loose Tube, MM 50, 24 Fibers, Dry Water Blk, Corrugated Steel, PE
R2613042	Outdoor F/O Cable, Multi Loose Tube, MM 50, OM3, 4 Fibers, Dry Water Blk, Corrugated Steel, PE
R2613082	Outdoor F/O Cable, Multi Loose Tube, MM 50, OM3, 8 Fibers, Dry Water Blk, Corrugated Steel, PE
R2613122	Outdoor F/O Cable, Multi Loose Tube, MM 50, OM3, 12 Fibers, Dry Water Blk, Corrugated Steel, PE
R2613242	Outdoor F/O Cable, Multi Loose Tube, MM 50, OM3, 24 Fibers, Dry Water Blk, Corrugated Steel, PE
R2614042	Outdoor F/O Cable, Multi Loose Tube, MM 50, OM4, 4 Fibers, Dry Water Blk, Corrugated Steel, PE
R2614082	Outdoor F/O Cable, Multi Loose Tube, MM 50, OM4, 8 Fibers, Dry Water Blk, Corrugated Steel, PE
R2614122	Outdoor F/O Cable, Multi Loose Tube, MM 50, OM4, 12 Fibers, Dry Water Blk, Corrugated Steel, PE
R2614242	Outdoor F/O Cable, Multi Loose Tube, MM 50, OM4, 24 Fibers, Dry Water Blk, Corrugated Steel, PE



Cables for Fiber Optic Cabling

Cables for Fiber Optic Cabling

F/O Tight Buffer Cables



Features

- 2 to 12 Tight Buffered fibers
- Each fiber is enclosed in a 0.9mm tight buffer made of a thermoplastic polymer
- The tight buffers are color coded for easy identification
- Water swelling glass yarns are employed with the fibers to serve as peripheral strength members and to block the cable core from water penetration
- UV resistant, Low Smoke, Zero Halogen (LSZH) compound outer jacket is extruded over the cable core

F/O WARRANTY

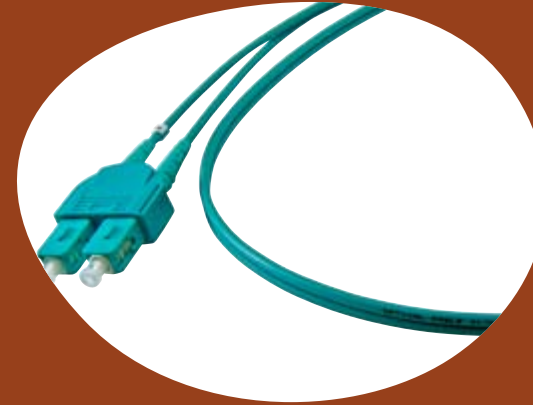


F/O WARRANTY



Part Number	Description
R2620020	Indoor F/O Cable, Tight Buffer, MM 62.5, 2 Fibers, Dry Water Blk, Glass, LSZH
R2620040	Indoor F/O Cable, Tight Buffer, MM 62.5, 4 Fibers, Dry Water Blk, Glass, LSZH
R2620080	Indoor F/O Cable, Tight Buffer, MM 62.5, 8 Fibers, Dry Water Blk, Glass, LSZH
R2620120	Indoor F/O Cable, Tight Buffer, MM 62.5, 12 Fibers, Dry Water Blk, Glass, LSZH
R2622020	Indoor F/O Cable, Tight Buffer, MM 50, 2 Fibers, Dry Water Blk, Glass, LSZH
R2622040	Indoor F/O Cable, Tight Buffer, MM 50, 4 Fibers, Dry Water Blk, Glass, LSZH
R2622080	Indoor F/O Cable, Tight Buffer, MM 50, 8 Fibers, Dry Water Blk, Glass, LSZH
R2622120	Indoor F/O Cable, Tight Buffer, MM 50, 12 Fibers, Dry Water Blk, Glass, LSZH
R2623020	Indoor F/O Cable, Tight Buffer, MM 50, OM3, 2 Fibers, Dry Water Blk, Glass, LSZH
R2623040	Indoor F/O Cable, Tight Buffer, MM 50, OM3, 4 Fibers, Dry Water Blk, Glass, LSZH
R2623080	Indoor F/O Cable, Tight Buffer, MM 50, OM3, 8 Fibers, Dry Water Blk, Glass, LSZH
R2623120	Indoor F/O Cable, Tight Buffer, MM 50, OM3, 12 Fibers, Dry Water Blk, Glass, LSZH
R2624020	Indoor F/O Cable, Tight Buffer, MM 50, OM4, 2 Fibers, Dry Water Blk, Glass, LSZH
R2624040	Indoor F/O Cable, Tight Buffer, MM 50, OM4, 4 Fibers, Dry Water Blk, Glass, LSZH
R2624080	Indoor F/O Cable, Tight Buffer, MM 50, OM4, 8 Fibers, Dry Water Blk, Glass, LSZH
R2624120	Indoor F/O Cable, Tight Buffer, MM 50, OM4, 12 Fibers, Dry Water Blk, Glass, LSZH

Patch Cords & SMART Jumpers for Fiber Optic Cabling



Patch Cords and Pigtails constitute RiT's vast range of fiber optic products and are available with several types of connectors, MPO, LC, SC, ST and MT-RJ. These high quality cords ensure that your physical network connectivity runs smoothly and effectively while reducing downtime errors. RiT's Patch Cord offering includes unique SMART Jumpers™ designed for use with the PatchView™ real-time intelligent infrastructure management (IIM) solution.

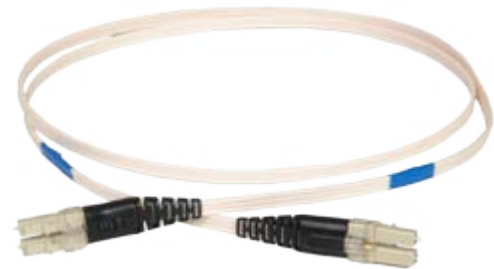
Section 5.4

LC SMART Jumper Patch Cords	168
SC SMART Jumper Patch Cords	170
MT-RJ SMART Jumper Patch Cords	171
Fiber Optic Pigtails & Patch Cords	172
MPO-MPO Patch Cords	178

Patch Cords & SMART Jumpers for Fiber Optic Cabling

LC SMART Jumper Patch Cords

F/O
WARRANTY



Features

- Designed for PatchView™ applications
- Comprised of two 0.6 mm HFFR tight buffer fibers and an additional 28 AWG copper wire housed within a MiniZIP Triamese construction cable
- Available with four fiber types – Single-Mode, Multi-Mode 50/125 OM4, Multi-Mode 50/125 OM3 and Multi-Mode 62.5/125
- Multi-Mode models are colored Aqua and Single-Mode models are colored Blue

Part Number	Description
R4198010	F/O SMART Jumper Patch Cord, LC, SM, PC, 1m
R4198020	F/O SMART Jumper Patch Cord, LC, SM, PC, 2m
R4198030	F/O SMART Jumper Patch Cord, LC, SM, PC, 3m
R4198050	F/O SMART Jumper Patch Cord, LC, SM, PC, 5m
R4199010	F/O SMART Jumper Patch Cord, LC, MM50, OM3, 1m
R4199020	F/O SMART Jumper Patch Cord, LC, MM50, OM3, 2m
R4199030	F/O SMART Jumper Patch Cord, LC, MM50, OM3, 3m
R4199050	F/O SMART Jumper Patch Cord, LC, MM50, OM3, 5m

Patch Cords & SMART Jumpers for Fiber Optic Cabling

F/O
WARRANTY



Part Number	Description
R4201010	F/O SMART Jumper Patch Cord, LC, MM62.5, 1m
R4201020	F/O SMART Jumper Patch Cord, LC, MM62.5, 2m
R4201030	F/O SMART Jumper Patch Cord, LC, MM62.5, 3m
R4201050	F/O SMART Jumper Patch Cord, LC, MM62.5, 5m
R4299010	F/O SMART Jumper Patch Cord, LC, MM50, OM4, 1m
R4299020	F/O SMART Jumper Patch Cord, LC, MM50, OM4, 2m
R4299030	F/O SMART Jumper Patch Cord, LC, MM50, OM4, 3m
R4299050	F/O SMART Jumper Patch Cord, LC, MM50, OM4, 5m

Patch Cords & SMART Jumpers for Fiber Optic Cabling

SC SMART Jumper Patch Cords



Features

- Designed for PatchView™ applications
- Comprised of two tight buffer fibers and an additional 26 AWG copper wire
- Available with three fiber types – Single-Mode, Multi-Mode 50/125 OM3 and Multi-Mode 62.5/125
- Multi-Mode models are colored Ivory and Single-Mode models are colored Blue

Part Number	Description
R3199100	F/O SMART Jumper Patch Cord, SC, SM, PC, 1m
R3199200	F/O SMART Jumper Patch Cord, SC, SM, PC, 2m
R3199300	F/O SMART Jumper Patch Cord, SC, SM, PC, 3m
R3199500	F/O SMART Jumper Patch Cord, SC, SM, PC, 5m
R3201100	F/O SMART Jumper Patch Cord, SC, MM62.5, 1m
R3201200	F/O SMART Jumper Patch Cord, SC, MM62.5, 2m
R3201300	F/O SMART Jumper Patch Cord, SC, MM62.5, 3m
R3201500	F/O SMART Jumper Patch Cord, SC, MM62.5, 5m
R3300100	F/O SMART Jumper Patch Cord, SC, MM50, OM3, 1m
R3300200	F/O SMART Jumper Patch Cord, SC, MM50, OM3, 2m
R3300300	F/O SMART Jumper Patch Cord, SC, MM50, OM3, 3m
R3300500	F/O SMART Jumper Patch Cord, SC, MM50, OM3, 5m

Patch Cords & SMART Jumpers for Fiber Optic Cabling

MT-RJ SMART Jumper Patch Cords



Features

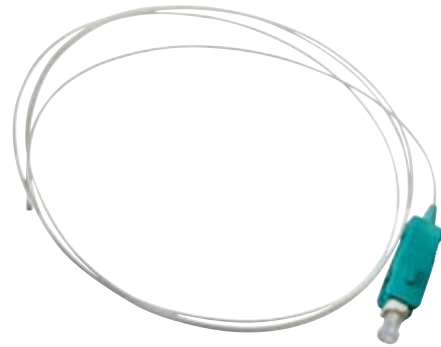
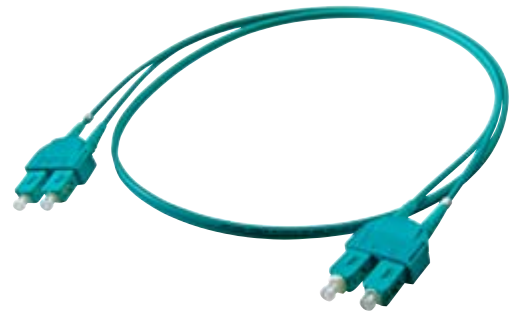
- Designed for PatchView™ applications
- Comprised of two tight buffer fibers and an additional 26 AWG copper wire
- Available with three fiber types – Single-Mode, Multi-Mode 50/125 OM3 and Multi-Mode 62.5/125

Part Number	Description
R3195010	F/O SMART Jumper Patch Cord, MT-RJ, MM62.5, 1m
R3195020	F/O SMART Jumper Patch Cord, MT-RJ, MM62.5, 2m
R3195030	F/O SMART Jumper Patch Cord, MT-RJ, MM62.5, 3m
R3195050	F/O SMART Jumper Patch Cord, MT-RJ, MM62.5, 5m
R3195210	F/O SMART Jumper Patch Cord, MT-RJ, MM50, OM3, 1m
R3195220	F/O SMART Jumper Patch Cord, MT-RJ, MM50, OM3, 2m
R3195230	F/O SMART Jumper Patch Cord, MT-RJ, MM50, OM3, 3m
R3195250	F/O SMART Jumper Patch Cord, MT-RJ, MM50, OM3, 5m
R3195310	F/O SMART Jumper Patch Cord, MT-RJ, SM, PC, 1m
R3195320	F/O SMART Jumper Patch Cord, MT-RJ, SM, PC, 2m
R3195330	F/O SMART Jumper Patch Cord, MT-RJ, SM, PC, 3m
R3195350	F/O SMART Jumper Patch Cord, MT-RJ, SM, PC, 5m

Patch Cords & SMART Jumpers for Fiber Optic Cabling

Fiber Optic Pigtails and Patch Cords

F/O
WARRANTY



Features

- Pre-assembled and individually tested Pigtails and Patch Cords
- Simplex or Duplex Patch Cord construction
- High quality LC, SC, MT-RJ and ST connectors
- Available with four fiber types – Single-Mode, Multi-Mode 50/125 OM4, Multi-Mode 50/125 OM3 and Multi-Mode 62.5/125

Part Number	Description
LC Duplex Patch Cords	
R4191010	F/O Patch Cord, LC, Duplex, SM, PC, 1m
R4191020	F/O Patch Cord, LC, Duplex, SM, PC, 2m
R4191030	F/O Patch Cord, LC, Duplex, SM, PC, 3m
R4191050	F/O Patch Cord, LC, Duplex, SM, PC, 5m
R4192010	F/O Patch Cord, LC, Duplex, MM50, OM3, 1m
R4192020	F/O Patch Cord, LC, Duplex, MM50, OM3, 2m
R4192030	F/O Patch Cord, LC, Duplex, MM50, OM3, 3m
R4192050	F/O Patch Cord, LC, Duplex, MM50, OM3, 5m

Patch Cords & SMART Jumpers for Fiber Optic Cabling

F/O
WARRANTY



Part Number	Description
R4194010	F/O Patch Cord, LC, Duplex, MM62.5, 1m
R4194020	F/O Patch Cord, LC, Duplex, MM62.5, 2m
R4194030	F/O Patch Cord, LC, Duplex, MM62.5, 3m
R4194050	F/O Patch Cord, LC, Duplex, MM62.5, 5m
R4195010	F/O Patch Cord, LC, Duplex, MM50, OM4, 1m
R4195020	F/O Patch Cord, LC, Duplex, MM50, OM4, 2m
R4195030	F/O Patch Cord, LC, Duplex, MM50, OM4, 3m
R4195050	F/O Patch Cord, LC, Duplex, MM50, OM4, 5m

LC Pigtails

R4204010	F/O Pigtail, LC, SM, PC, 1m
R4204020	F/O Pigtail, LC, SM, PC, 2m
R4204030	F/O Pigtail, LC, SM, PC, 3m
R4204050	F/O Pigtail, LC, SM, PC, 5m
R4205010	F/O Pigtail, LC, MM50, OM3, 1m
R4205020	F/O Pigtail, LC, MM50, OM3, 2m
R4205030	F/O Pigtail, LC, MM50, OM3, 3m
R4205050	F/O Pigtail, LC, MM50, OM3, 5m
R4207010	F/O Pigtail, LC, MM62.5, 1m
R4207020	F/O Pigtail, LC, MM62.5, 2m
R4207030	F/O Pigtail, LC, MM62.5, 3m
R4207050	F/O Pigtail, LC, MM62.5, 5m
R4208010	F/O Pigtail, LC, MM50, OM4, 1m
R4208020	F/O Pigtail, LC, MM50, OM4, 2m
R4208030	F/O Pigtail, LC, MM50, OM4, 3m
R4208050	F/O Pigtail, LC, MM50, OM4, 5m

SC Simplex Patch Cords

R3213110	F/O Patch Cord, SC, Simplex, MM62.5, 1m
R3213120	F/O Patch Cord, SC, Simplex, MM62.5, 2m
R3213130	F/O Patch Cord, SC, Simplex, MM62.5, 3m
R3213150	F/O Patch Cord, SC, Simplex, MM62.5, 5m
R3233101	F/O Patch Cord, SC, Simplex, SM, PC, 1m
R3233102	F/O Patch Cord, SC, Simplex, SM, PC, 2m
R3233103	F/O Patch Cord, SC, Simplex, SM, PC, 3m
R3233105	F/O Patch Cord, SC, Simplex, SM, PC, 5m

Patch Cords & SMART Jumpers for Fiber Optic Cabling

Part Number	Description
R3323110	F/O Patch Cord, SC, Simplex, MM50, OM3, 1m
R3323120	F/O Patch Cord, SC, Simplex, MM50, OM3, 2m
R3323130	F/O Patch Cord, SC, Simplex, MM50, OM3, 3m
R3323150	F/O Patch Cord, SC, Simplex, MM50, OM3, 5m

SC Duplex Patch Cords

R3214110	F/O Patch Cord, SC, Duplex, MM62.5, 1m
R3214120	F/O Patch Cord, SC, Duplex, MM62.5, 2m
R3214130	F/O Patch Cord, SC, Duplex, MM62.5, 3m
R3214150	F/O Patch Cord, SC, Duplex, MM62.5, 5m
R3234101	F/O Patch Cord, SC, Duplex, SM, PC, 1m
R3234102	F/O Patch Cord, SC, Duplex, SM, PC, 2m
R3234103	F/O Patch Cord, SC, Duplex, SM, PC, 3m
R3234105	F/O Patch Cord, SC, Duplex, SM, PC, 5m
R3324110	F/O Patch Cord, SC, Duplex, MM50, OM3, 1m
R3324120	F/O Patch Cord, SC, Duplex, MM50, OM3, 2m
R3324130	F/O Patch Cord, SC, Duplex, MM50, OM3, 3m
R3324150	F/O Patch Cord, SC, Duplex, MM50, OM3, 5m

SC Pigtailed

R3216110	F/O Pigtail, SC, MM62.5, 1m
R3216120	F/O Pigtail, SC, MM62.5, 2m
R3216130	F/O Pigtail, SC, MM62.5, 3m
R3216150	F/O Pigtail, SC, MM62.5, 5m
R3236101	F/O Pigtail, SC, SM, PC, 1m
R3236102	F/O Pigtail, SC, SM, PC, 2m
R3236103	F/O Pigtail, SC, SM, PC, 3m
R3236105	F/O Pigtail, SC, SM, PC, 5m
R3326110	F/O Pigtail, SC, MM50, OM3, 1m
R3326120	F/O Pigtail, SC, MM50, OM3, 2m
R3326130	F/O Pigtail, SC, MM50, OM3, 3m
R3326150	F/O Pigtail, SC, MM50, OM3, 5m

MT-RJ Patch Cords

R3194010	F/O Patch Cord, MT-RJ, MM62.5, 1m
R3194020	F/O Patch Cord, MT-RJ, MM62.5, 2m
R3194030	F/O Patch Cord, MT-RJ, MM62.5, 3m
R3194050	F/O Patch Cord, MT-RJ, MM62.5, 5m



Patch Cords & SMART Jumpers for Fiber Optic Cabling

Part Number	Description
R3194210	F/O Patch Cord, MT-RJ, MM50, OM3, 1m
R3194220	F/O Patch Cord, MT-RJ, MM50, OM3, 2m
R3194230	F/O Patch Cord, MT-RJ, MM50, OM3, 3m
R3194250	F/O Patch Cord, MT-RJ, MM50, OM3, 5m
R3194310	F/O Patch Cord, MT-RJ, SM, PC, 1m
R3194320	F/O Patch Cord, MT-RJ, SM, PC, 2m
R3194330	F/O Patch Cord, MT-RJ, SM, PC, 3m
R3194350	F/O Patch Cord, MT-RJ, SM, PC, 5m

MT-RJ Pigtailed

R3192010	F/O Pigtail, MT-RJ, MM62.5, 1m
R3192020	F/O Pigtail, MT-RJ, MM62.5, 2m
R3192030	F/O Pigtail, MT-RJ, MM62.5, 3m
R3192050	F/O Pigtail, MT-RJ, MM62.5, 5m
R3192210	F/O Pigtail, MT-RJ, MM50, OM3, 1m
R3192220	F/O Pigtail, MT-RJ, MM50, OM3, 2m
R3192230	F/O Pigtail, MT-RJ, MM50, OM3, 3m
R3192250	F/O Pigtail, MT-RJ, MM50, OM3, 5m
R3192310	F/O Pigtail, MT-RJ, SM, PC, 1m
R3192320	F/O Pigtail, MT-RJ, SM, PC, 2m
R3192330	F/O Pigtail, MT-RJ, SM, PC, 3m
R3192350	F/O Pigtail, MT-RJ, SM, PC, 5m

ST Simplex Patch Cords

R3213010	F/O Patch Cord, ST, Simplex, MM62.5, 1m
R3213020	F/O Patch Cord, ST, Simplex, MM62.5, 2m
R3213030	F/O Patch Cord, ST, Simplex, MM62.5, 3m
R3213050	F/O Patch Cord, ST, Simplex, MM62.5, 5m
R3233001	F/O Patch Cord, ST, Simplex, SM, PC, 1m
R3233002	F/O Patch Cord, ST, Simplex, SM, PC, 2m
R3233003	F/O Patch Cord, ST, Simplex, SM, PC, 3m
R3233005	F/O Patch Cord, ST, Simplex, SM, PC, 5m
R3323010	F/O Patch Cord, ST, Simplex, MM50, OM3, 1m
R3323020	F/O Patch Cord, ST, Simplex, MM50, OM3, 2m
R3323030	F/O Patch Cord, ST, Simplex, MM50, OM3, 3m
R3323050	F/O Patch Cord, ST, Simplex, MM50, OM3, 5m



Patch Cords & SMART Jumpers for Fiber Optic Cabling

Part Number	Description
ST Duplex Patch Cords	
R3214010	F/O Patch Cord, ST, Duplex, MM62.5, 1m
R3214020	F/O Patch Cord, ST, Duplex, MM62.5, 2m
R3214030	F/O Patch Cord, ST, Duplex, MM62.5, 3m
R3214050	F/O Patch Cord, ST, Duplex, MM62.5, 5m
R3234001	F/O Patch Cord, ST, Duplex, SM, PC, 1m
R3234002	F/O Patch Cord, ST, Duplex, SM, PC, 2m
R3234003	F/O Patch Cord, ST, Duplex, SM, PC, 3m
R3234005	F/O Patch Cord, ST, Duplex, SM, PC, 5m
R3324010	F/O Patch Cord, ST, Simplex, MM50, OM3, 1m
R3324020	F/O Patch Cord, ST, Simplex, MM50, OM3, 2m
R3324030	F/O Patch Cord, ST, Simplex, MM50, OM3, 3m
R3324050	F/O Patch Cord, ST, Simplex, MM50, OM3, 5m
ST Pigtailed	
R3216010	F/O Pigtail, ST, MM62.5, 1m
R3216020	F/O Pigtail, ST, MM62.5, 2m
R3216030	F/O Pigtail, ST, MM62.5, 3m
R3216050	F/O Pigtail, ST, MM62.5, 5m
R3236001	F/O Pigtail, ST, SM, PC, 1m
R3236002	F/O Pigtail, ST, SM, PC, 2m
R3236003	F/O Pigtail, ST, SM, PC, 3m
R3236005	F/O Pigtail, ST, SM, PC, 5m
R3326010	F/O Pigtail, ST, MM50, OM3, 1m
R3326020	F/O Pigtail, ST, MM50, OM3, 2m
R3326030	F/O Pigtail, ST, MM50, OM3, 3m
R3326050	F/O Pigtail, ST, MM50, OM3, 5m
SC-LC Duplex Patch Cords	
R3214510	F/O Patch Cord, SC-LC, Duplex, MM62.5, 1m
R3214520	F/O Patch Cord, SC-LC, Duplex, MM62.5, 2m
R3214530	F/O Patch Cord, SC-LC, Duplex, MM62.5, 3m
R3214550	F/O Patch Cord, SC-LC, Duplex, MM62.5, 5m
R4510010	F/O Patch Cord, SC-LC, Duplex, SM, PC, 1m
R4510020	F/O Patch Cord, SC-LC, Duplex, SM, PC, 2m
R4510030	F/O Patch Cord, SC-LC, Duplex, SM, PC, 3m
R4510050	F/O Patch Cord, SC-LC, Duplex, SM, PC, 5m

F/O
WARRANTY



Patch Cords & SMART Jumpers for Fiber Optic Cabling

Part Number	Description
R3324510	F/O Patch Cord, SC-LC, Duplex, MM50, OM3, 1m
R3324520	F/O Patch Cord, SC-LC, Duplex, MM50, OM3, 2m
R3324530	F/O Patch Cord, SC-LC, Duplex, MM50, OM3, 3m
R3324550	F/O Patch Cord, SC-LC, Duplex, MM50, OM3, 5m
SC-ST Duplex Patch Cords	
R3214210	F/O Patch Cord, SC-ST, Duplex, MM62.5, 1m
R3214220	F/O Patch Cord, SC-ST, Duplex, MM62.5, 2m
R3214230	F/O Patch Cord, SC-ST, Duplex, MM62.5, 3m
R3214250	F/O Patch Cord, SC-ST, Duplex, MM62.5, 5m
R3234201	F/O Patch Cord, SC-ST, Duplex, SM, PC, 1m
R3234202	F/O Patch Cord, SC-ST, Duplex, SM, PC, 2m
R3234203	F/O Patch Cord, SC-ST, Duplex, SM, PC, 3m
R3234205	F/O Patch Cord, SC-ST, Duplex, SM, PC, 5m
R3324210	F/O Patch Cord, SC-ST, Duplex, MM50, OM3, 1m
R3324220	F/O Patch Cord, SC-ST, Duplex, MM50, OM3, 2m
R3324230	F/O Patch Cord, SC-ST, Duplex, MM50, OM3, 3m
R3324250	F/O Patch Cord, SC-ST, Duplex, MM50, OM3, 5m

F/O
WARRANTY



Patch Cords & SMART Jumpers for Fiber Optic Cabling

F/O
WARRANTY



MPO-MPO Patch Cords



Features

- Pre-assembled and individually tested Patch Cords
- Comprised of 12 fibers cable and two MPO connectors
- High quality MPO connectors
- Available with three fiber types – Single-Mode, Multi-Mode 50/125 OM3 and Multi-Mode 50/125 OM4

Part Number	Description
R3310010	F/O Patch Cord, MPO-MPO, MM, OM3, LSZH, 1m
R3310020	F/O Patch Cord, MPO-MPO, MM, OM3, LSZH, 2m
R3310030	F/O Patch Cord, MPO-MPO, MM, OM3, LSZH, 3m
R3310050	F/O Patch Cord, MPO-MPO, MM, OM3, LSZH, 5m
R3311010	F/O Patch Cord, MPO-MPO, MM, OM4, LSZH, 1m
R3311020	F/O Patch Cord, MPO-MPO, MM, OM4, LSZH, 2m
R3311030	F/O Patch Cord, MPO-MPO, MM, OM4, LSZH, 3m
R3311050	F/O Patch Cord, MPO-MPO, MM, OM4, LSZH, 5m
R3312010	F/O Patch Cord, MPO-MPO, SM, LSZH, 1m
R3312020	F/O Patch Cord, MPO-MPO, SM, LSZH, 2m
R3312030	F/O Patch Cord, MPO-MPO, SM, LSZH, 3m
R3312050	F/O Patch Cord, MPO-MPO, SM, LSZH, 5m

Appendices

SMARTen Warranty



Definitions

RiT

RiT Technologies Ltd. 24 Raoul Wallenberg St., Tel Aviv 69719, Israel
Tel: 972-3-6455151, Fax: 972-3-6474115

In the U.S.: RiT Technologies Ltd. by RiT Technologies Inc.
900 Corporate Drive, Mahwah, NJ 07430, Tel: (201) 512-1970,
Fax: (201) 512-1286

Certified Cabling Installer

A cabling installer certified by RiT to install and support RiT cabling products.

Registered Installation

An installation where registration forms have been completed by a Certified Cabling Installer and RiT has issued a Registered Installation Certificate and a registration number.

Effective Date

The date of the Registered Installation Certificate issued by RiT.

Warranty Period

Twenty years from the Effective Date.

SMARTen Components

The patch panels, communications outlets, cables and patch cords marked by a **C6A** icon.

Cabling System

Components used to constitute one or more end-to-end cable links consisting of a length of cable, one end terminated in a Patch Panel, and the other in a communications outlet or another Patch Panel. One end of the link may have a patch cord. A Cabling System is defined as any number of such links.

SMARTen Cabling System™

A Cabling System comprised exclusively of SMARTen Components, installed by a Certified Cabling Installer and qualified as a Registered Installation.

Beneficiary

The person or entity to whom the original RiT Registered Installation Certificate was issued. A new tenant or owner of an existing SMARTen Cabling System must apply for installation recertification and for a new Registered Installation Certificate.

Standards

ANSI/TIA/EIA-568-C.2 - Transmission Performance Specifications for 4 Pair 100 ohm Category 6A Cabling,
ISO/IEC 11801 2nd edition (2002), amendment 2
CENELEC EN50173 (200x) for Category 6A/CLASS E_A
ANSI - American National Standards Institute
TIA - Telecom Industries Association
EIA - Electrical Industries Association
ISO - International Standards Organization
IEC - International Electrotechnical Commission

Warranties

The Component Warranty

Any SMARTen Component included in a Registered Installation will be free from manufacturing defects in material and workmanship under normal and proper use.

The Performance Warranty

- Any SMARTen Component for copper cabling included in a Registered Installation of a SMARTen Cabling System will meet or exceed the electrical parameters stated in the above Standards.
- Any copper permanent link included in a Registered Installation of a SMARTen Cabling System will meet or exceed the electrical parameters stated in the above Standards, for permanent links and channels.
- Any copper permanent link included in a Registered Installation of a SMARTen Cabling System will be capable of delivering at least 10Gbps to the workstation.

The Application Warranty

Any SMARTen Cabling System will be free from failures which prevent any of the application(s) for which the SMARTen Cabling System installation was designed.

What RiT Will Do

RiT, or a RiT Certified Cabling Installer will repair or replace, at their discretion, defective SMARTen Components which violate the above warranties, with no charge to the Beneficiary.

Warranty Claim Procedure

- In the event of a system failure, the Beneficiary must rule out potential causes which are not related to the SMARTen Cabling System.
- After the problem has been isolated to the SMARTen Cabling System, the Beneficiary must have the installation inspected by a RiT Certified Cabling Installer, and complete a Warranty Claim form provided by RiT. Part of the form must be completed by the RiT Certified Cabling Installer who inspected the installation. The signed form should be forwarded to RiT.
- If according to the form, and in the sole opinion of RiT, there exists a valid Warranty claim, RiT will be responsible for the repair or replacement of the defective SMARTen Components.
- If after inspection, the problem is found to be the fault of something other than the SMARTen Cabling System, RiT and RiT's Certified Cabling Installer will invoice the Beneficiary for all related labor, travel expenses and normal personnel and equipment charges. By acceptance of the Registered Installation Certificate, the Beneficiary acknowledges an agreement to pay all charges considered to be normal industry charges for work completed in regards to processing the claim.

Limitations

This Warranty is given only to brand new SMARTen Components, installed according to RiT's specifications and instructions, and is valid only if all the following conditions are met:

- The Cabling System is a SMARTen Cabling System.
- All SMARTen Components are operated within their operational limits, as specified on the appropriate product manufacturer's datasheets, for the whole of the Warranty Period.
- This Warranty applies to the first installation of the SMARTen Components. Any alterations to the original Registered Installation of the SMARTen Cabling System, beyond normal customer interface, must be registered with RiT and a new Registered Installation Certificate must be issued by RiT. If any portion of the SMARTen Cabling System was altered without registration with RiT, this Warranty is void. RiT, at its discretion, retains the right to refuse to register a system it deems incorrectly designed or installed.

General

- RiT's liability under this Warranty is limited in all aspects to the value of goods supplied by RiT and in no event shall RiT be liable for special, indirect and/or consequential damages. The Beneficiary relies on his/her own skill and judgment as to the suitability of all goods offered and supplied for any particular purpose or for use under any specific conditions.
- Beneficiary's exclusive and RiT's entire liability arising from or in connection with the SMARTen Components, the SMARTen Cabling System and/or this Warranty for breach of warranty or arising from or in connection with the use or inability to use the SMARTen Components and/or the SMARTen Cabling System, whether in contract or in tort or otherwise shall be limited to the express remedies provided herein.
- This Warranty is in force as of its title date and will remain in force until amended by RiT, at its sole discretion. No notice of such amendment will be given. The Warranty version which applies to a specific SMARTen Component is the one which was in force at the Effective Date.
- This Warranty in all respects, shall be construed and operate as an Israeli contract and in conformity with Israeli Law.

SMART CLASSix Warranty



Definitions

RiT

RiT Technologies Ltd. 24 Raoul Wallenberg St., Tel Aviv 69719, Israel
Tel: 972-3-6455151, Fax: 972-3-6474115

In the U.S.: RiT Technologies Ltd. by RiT Technologies Inc.
900 Corporate Drive, Mahwah, NJ 07430, Tel: (201) 512-1970,
Fax: (201) 512-1286

Certified Cabling Installer

A cabling installer certified by RiT to install and support RiT cabling products.

Registered Installation

An installation where registration forms have been completed by a Certified Cabling Installer and RiT has issued a Registered Installation Certificate and a registration number.

Effective Date

The date of the Registered Installation Certificate issued by RiT.

Warranty Period

Twenty years from the Effective Date.

SMART CLASSix Components

The patch panels, communications outlets, cables and patch cords marked by a **C6** icon.

Cabling System

Components used to constitute one or more end-to-end cable links consisting of a length of cable, one end terminated in a Patch Panel, and the other in a communications outlet or another Patch Panel. One end of the link may have a patch cord. A Cabling System is defined as any number of such links.

SMART CLASSix Cabling System™

A Cabling System comprised exclusively of SMART CLASSix Components, installed by a Certified Cabling Installer and qualified as a Registered Installation.

Beneficiary

The person or entity to whom the original RiT Registered Installation Certificate was issued. A new tenant or owner of an existing SMART CLASSix Cabling System must apply for installation recertification and for a new Registered Installation Certificate.

Standards

ANSI/TIA/EIA-568-C.2
Transmission performance specifications for 4-pairs 100 ohm Category 6 cabling
Requirements: Connecting Hardware, Cables, Patch cords, Permanent link & channel
ISO/IEC 11801 2nd edition (2002), amendment 2
Information technology - Generic cabling for customer premises
Requirements: Connecting Hardware, Cables, Patch cords, Permanent link & channel. CENELEC EN 50173-1, 2002
Information technology - Generic cabling systems: General requirements and office areas
Requirements: Connecting Hardware, Cables, Patch cords, Permanent link & channel

ANSI - American National Standards Institute

TIA - Telecom Industries Association

EIA - Electrical Industries Association

ISO - International Standards Organization

IEC - International Electrotechnical Commission

Warranties

The Component Warranty

Any SMART CLASSix Component included in a Registered Installation will be free from manufacturing defects in material and workmanship under normal and proper use.

The Performance Warranty

- Any SMART CLASSix Component for copper cabling included in a Registered Installation of a SMART CLASSix Cabling System will meet or exceed the electrical parameters stated in the above Standards.
- Any copper link included in a Registered Installation of a SMART CLASSix Cabling System will meet or exceed the electrical parameters stated in the above Standards, for permanent links and channels.
- Any copper permanent link included in a Registered Installation of a SMART CLASSix Cabling System will be capable of delivering at least 1Gbps to the workstation.

The Application Warranty

Any SMART CLASSix Cabling System will be free from failures which prevent any of the application(s) for which the SMART CLASSix Cabling System installation was designed.

What RiT Will Do

RiT, or a RiT Certified Cabling Installer will repair or replace, at their discretion, defective SMART CLASSix Components which violate the above warranties, with no charge to the Beneficiary.

Warranty Claim Procedure

- In the event of a system failure, the Beneficiary must rule out potential causes which are not related to the SMART CLASSix Cabling System.
- After the problem has been isolated to the SMART CLASSix Cabling System, the Beneficiary must have the installation inspected by a RiT Certified Cabling Installer, and complete a Warranty Claim form provided by RiT. Part of the form must be completed by the RiT Certified Cabling Installer who inspected the installation. The signed form should be forwarded to RiT.
- If according to the form, and in the sole opinion of RiT, there exists a valid Warranty claim, RiT will be responsible for the repair or replacement of the defective SMART CLASSix Components including labor costs.
- If after inspection, the problem is found to be the fault of something other than the SMART CLASSix Cabling System, RiT and RiT's Certified Cabling Installer will invoice the Beneficiary for all related labor, travel expenses and normal personnel and equipment charges. By acceptance of the Registered Installation Certificate, the Beneficiary acknowledges an agreement to pay all charges considered to be normal industry charges for work completed in regards to processing the claim.

Limitations

This Warranty is given only to brand new SMART CLASSix Components, installed according to RiT's specifications and instructions, and is valid only if all the following conditions are met:

- The Cabling System is a SMART CLASSix Cabling System.
- The SMART-CLASSix Cabling System was installed according to RiT's specifications and instructions and the applicable standard.
- The SMART-CLASSix Cabling System was installed according to RiT's specifications and instructions and the applicable standard.
- All SMART CLASSix Components are operated within their operational limits, as specified on the appropriate product manufacturer's datasheets, for the whole of the Warranty Period.
- This Warranty applies to the first installation of the SMART CLASSix Components. Any alterations to the original Registered Installation of the SMART CLASSix Cabling System, beyond normal customer interface, must be registered with RiT and a new Registered Installation Certificate must be issued by RiT. If any portion of the SMART CLASSix Cabling System was altered without registration with RiT, this Warranty is void. RiT, at its discretion, retains the right to refuse to register a system it deems incorrectly designed or installed.

General

- RiT's liability under this Warranty is limited in all aspects to the value of goods supplied by RiT and in no event shall RiT be liable for special, indirect and/or consequential damages. The Beneficiary relies on his/her own skill and judgment as to the suitability of all goods offered and supplied for any particular purpose or for use under any specific conditions.
- RiT shall be under no liability whatsoever for any breach of contract, however arising, whether of any express or implied condition, warranty or terms of contract (and whether amounting to a repudiation or fundamental breach or not) nor for negligence including mis-statement either in tort or contract or otherwise, nor for any loss, injury or damage whether direct or consequential where flowing from any defect latent or otherwise and whether or not attributable to any delay in repair or replacement by RiT and whether in tort or contract or otherwise.
- This Warranty is in force as of its title date and will remain in force until amended by RiT, at its sole discretion. No notice of such amendment will be given. The Warranty version which applies to a specific SMART CLASSix Component is the one which was in force at the Effective Date.
- This Warranty in all respects, shall be construed and operate as an Israeli contract and in conformity with Israeli Law.

SMART Giga Warranty



Definitions

RiT Technologies Ltd. 24 Raoul Wallenberg St., Tel Aviv 69719, Israel
Tel: 972-3-6455151, Fax: 972-3-6474115
In the U.S.: RiT Technologies Ltd. by RiT Technologies Inc.
900 Corporate Drive, Mahwah, NJ 07430, Tel: (201) 512-1970,
Fax: (201) 512-1286

Certified Cabling Installer

A cabling installer certified by RiT to install and support RiT cabling products.

Registered Installation

An installation where registration forms have been completed by a Certified Cabling Installer and RiT has issued a Registered Installation Certificate and a registration number.

Effective Date

The earlier of:

- The completion date of the installation.
- The date of the Registered Installation Certificate issued by RiT

Warranty Period

Twenty years from the Effective Date.

SMART Giga Components

The Patch Panels, communications outlets, cables and patch cords marked by a **C5e** icon.

Cabling System

Components used to constitute one or more end-to-end cable links consisting of a length of cable, one end terminated in a patch panel, and the other in a communications outlet or another patch panel. One end of the link may have a patch cord. A Cabling System is defined as any number of such links.

SMART Giga Cabling System™

A Cabling System comprised exclusively of SMART Giga Components, installed by a Certified Cabling Installer and qualified as a Registered Installation.

Beneficiary

The person or entity to whom the original RiT Registered Installation Certificate was issued. A new tenant or owner of an existing SMART Giga Cabling System must apply for installation recertification and for a new Registered Installation Certificate.

Standards

ANSI/TIA/EIA-568-C.2
Telecommunications Cabling Standard
ISO/IEC 11801 2nd edition (2002), amendment 2
Generic Cabling for Customer Premises
EN 50173 second edition
Performance Requirements of Generic Cabling Schemes
ANSI - American National Standards Institute
TIA - Telecom Industries Association
EIA - Electrical Industries Association
ISO - International Standards Organization
IEC - International Electrotechnical Commission

Warranties

The Component Warranty

Any SMART Giga Component included in a Registered Installation will be free from manufacturing defects in material and workmanship under normal and proper use.

The Performance Warranty

- Any SMART Giga Component for copper cabling included in a Registered Installation of a SMART Giga Cabling System will meet or exceed the electrical parameters stated in the above Standards.
- Any copper permanent link included in a Registered Installation of a SMART Giga Cabling System will meet or exceed the electrical parameters stated in the above Standards, for permanent links and channels.
- Any copper permanent link included in a Registered Installation of a SMART Giga Cabling System will be capable of delivering at least 1Gbps to the workstation.

The Application Warranty

Any SMART Giga Cabling System will be free from failures which prevent any of the following applications for which the original SMART Giga Cabling System installation was designed.

What RiT Will Do

RiT, or a RiT Certified Cabling Installer will repair or replace, at their discretion, defective SMART Giga Components which violate the above warranties, with no charge to the Beneficiary.

Warranty Claim Procedure

- In the event of a system failure, the Beneficiary must rule out potential causes which are not related to the SMART Giga Cabling System.
- After the problem has been isolated to the SMART Giga Cabling System, the Beneficiary must have the installation inspected by a RiT Certified Cabling Installer, and complete a Warranty Claim form provided by RiT. Part of the form must be completed by the RiT Certified Cabling Installer who inspected the installation. The signed form should be forwarded to RiT.
- If according to the form, and in the sole opinion of RiT, there exists a valid Warranty claim, RiT will be responsible for the repair or replacement of the defective SMART Giga Components including labor costs.
- If after inspection, the problem is found to be the fault of something other than the SMART Giga Cabling System, RiT and RiT's Certified Cabling Installer will invoice the Beneficiary for all related labor, travel expenses and normal personnel and equipment charges. By acceptance of the Registered Installation Certificate, the Beneficiary acknowledges an agreement to pay all charges considered to be normal industry charges for work completed in regards to processing the claim.

Limitations

This Warranty is given only to brand new SMART Giga Components, installed according to RiT's specifications and instructions, and is valid only if all the following conditions are met:

- The Cabling System is a SMART Giga Cabling System.
- UTP SMART Giga Components may not be mixed with screened and/or shielded SMART Giga Components in one Cabling System.
- The SMART Giga Cabling System was installed according to RiT's specifications and instructions and the applicable standard.
- All SMART Giga Components are operated within their operational limits, as specified on the appropriate product manufacturer's data sheets, for the whole of the Warranty Period.
- This Warranty applies to the first installation of the SMART Giga Components. Any alterations to the original Registered Installation of the SMART Giga Cabling System, beyond normal customer interface, must be registered with RiT and a new Registered Installation Certificate must be issued by RiT. If any portion of the SMART Giga Cabling System was altered without registration with RiT, this Warranty is void. RiT, at its discretion, retains the right to refuse to register a system it deems incorrectly designed or installed.

General

- RiT's liability under this Warranty is limited in all aspects to the value of goods supplied by RiT and in no event shall RiT be liable for consequential damages.
- The Beneficiary relies on his own skill and judgment as to the suitability of all goods offered and supplied for any particular purpose or for use under any specific conditions.
- RiT shall be under no liability whatsoever for any breach of contract, however arising, whether of any express or implied condition, warranty or terms of contract (and whether amounting to a repudiation or fundamental breach or not) nor for negligence including mis-statement either in tort or contract or otherwise, nor for any loss, injury or damage whether direct or consequential where flowing from any defect latent or otherwise and whether or not attributable to any delay in repair or replacement by RiT and whether in tort or contract or otherwise.
- This Warranty is in force as of its title date and will remain in force until amended by RiT, at its sole discretion. No notice of such amendment will be given. The Warranty version which applies to a specific SMART Giga Component is the one which was in force at the Effective Date.
- This Warranty in all respects, shall be construed and operate as an Israeli contract and in conformity with Israeli Law.

Fiber Optic Warranty



Definitions

RiT Technologies Ltd. 24 Raoul Wallenberg St., Tel Aviv 69719, Israel
Tel: 972-3-6455151, Fax: 972-3-6474115
In the U.S.: RiT Technologies Ltd. by RiT Technologies Inc.
900 Corporate Drive, Mahwah, NJ 07430, Tel: (201) 512-1970,
Fax: (201) 512-1286

Certified Cabling Installer

A cabling installer certified by RiT to install and support RiT cabling products.

Registered Installation

An installation where registration forms have been completed by a Certified Cabling Installer and RiT has issued a Registered Installation Certificate and a registration number.

Effective Date

The earlier of:

- The completion date of the installation.
- The date of the Registered Installation Certificate issued by RiT

Warranty Period

Twenty years from the Effective Date.

SMART F/O Components

The Patch Panels, communications outlets, cables and patch cords marked by an **F/O** icon.

Cabling System

Components used to constitute one or more end-to-end cable links consisting of a length of cable, one end terminated in a patch panel, and the other in a communications outlet or another patch panel. One end of the link may have a patch cord. A Cabling System is defined as any number of such links.

SMART F/O Cabling System

A Cabling System comprised exclusively of SMART F/O Components, installed by a Certified Cabling Installer and qualified as a Registered Installation.

Beneficiary

The person or entity to whom the original RiT Registered Installation Certificate was issued. A new tenant or owner of an existing SMART F/O Cabling System must apply for installation recertification and for a new Registered Installation Certificate.

Standards

ANSI/TIA/EIA-568-C.3 and ANSI/TIA/EIA-568-C.1
Optical Fiber cabling components standard
Commercial Building Telecommunications Cabling Standard - Part 1:
General Requirements - Addendum 3 - Supportable Distances and Channel Attenuation for Optical Fiber Applications by Fiber Type
ISO/IEC 11801 2nd edition
Information technology - Generic cabling for customer premises
CENELEC EN 50173-1, 2005
Information technology - Generic cabling systems: General requirements and office areas
ANSI - American National Standards Institute
TIA - Telecom Industries Association
EIA - Electrical Industries Association
ISO - International Standards Organization
IEC - International Electrotechnical Commission

Warranties

The Component Warranty

Any SMART F/O Component included in a Registered Installation will be free from manufacturing defects in material and workmanship under normal and proper use.

The Performance Warranty

- Any SMART-F/O Component for fiber optic cabling included in a Registered Installation of a SMART-F/O Cabling System will meet or exceed the optical parameters stated in the above Standards.
- Any fiber optic link included in a Registered Installation of a SMART-F/O Cabling System will meet or exceed the optical parameters stated in the above Standards, for permanent links and channels.

The Application Warranty

Any SMART F/O Cabling System will be free from failures which prevent any of the following applications: for which the original SMART F/O Cabling System installation was designed.

What RiT Will Do

RiT, or a RiT Certified Cabling Installer will repair or replace, at their discretion, defective SMART F/O Components which violate the above warranties, with no charge to the Beneficiary.

Warranty Claim Procedure

- In the event of a system failure, the Beneficiary must rule out potential causes which are not related to the SMART-F/O Cabling System.
- The Beneficiary will conduct the performance tests using a calibrated and updated test equipment.
- After the problem has been isolated to the SMART-F/O Cabling System, the Beneficiary must have the installation inspected by a RiT Certified Cabling Installer, and complete a Warranty Claim form provided by RiT. Part of the form must be completed by the RiT Certified Cabling Installer who inspected the installation. The signed form should be forwarded to RiT.
- If, according to the form, and in the sole opinion of RiT, there exists a valid Warranty claim, RiT will be responsible for the repair or replacement of the defective SMART-F/O Components including labor costs.
- If, after inspection, the problem is found to be the fault of something other than the SMART-F/O Cabling System, RiT and RiT's Certified Cabling Installer will invoice the Beneficiary for all related labor, travel expenses and normal personnel and equipment charges. By acceptance of the Registered Installation Certificate, the Beneficiary acknowledges an agreement to pay all charges considered to be normal industry charges for work completed in regards to processing the claim.

Limitations

This Warranty is given only to brand new SMART F/O Components, installed according to RiT's specifications and instructions, and is valid only if all the following conditions are met:

- The Cabling System is a SMART-F/O Cabling System.
- The Smart F/O Components of one Cabling System must own the same mechanical optical parameters such as the fiber core diameter.
- The SMART-F/O Cabling System was installed according to RiT's specifications and instructions and the applicable standard.
- All SMART-F/O Components are operated within their operational limits, as specified on the appropriate product manufacturer's data sheets, for the whole of the Warranty Period.
- This Warranty applies to the first installation of the SMART-F/O Components. Any alterations to the original Registered Installation of the SMART-F/O Cabling System, beyond normal customer interface, must be registered with RiT and a new Registered Installation Certificate must be issued by RiT. If any portion of the SMART-F/O Cabling System was altered without registration with RiT, this Warranty is void. RiT, at its discretion, retains the right to refuse to register a system it deems incorrectly designed or installed.

General

- RiT's liability under this Warranty is limited in all aspects to the value of goods supplied by RiT and in no event shall RiT be liable for consequential damages.
- The Beneficiary relies on his own skill and judgment as to the suitability of all goods offered and supplied for any particular purpose or for use under any specific conditions.
- RiT shall be under no liability whatsoever for any breach of contract, however arising, whether of any express or implied condition, warranty or terms of contract (and whether amounting to a repudiation or fundamental breach or not) nor for negligence including mis-statement either in tort or contract or otherwise, nor for any loss, injury or damage whether direct or consequential where flowing from any defect latent or otherwise and whether or not attributable to any delay in repair or replacement by RiT and whether in tort or contract or otherwise.
- This Warranty is in force as of its title date and will remain in force until amended by RiT, at its sole discretion. No notice of such amendment will be given. The Warranty version which applies to a specific SMART-F/O Component is the one which was in force at the Effective Date.
- This Warranty in all respects, shall be construed and operate as an Israeli contract and in conformity with Israeli Law.

Index

R372904	82	R3033320	118	R201300	170
R3010072	71	R3033330	118	R3201500	170
R3010082	71	R3033350	118	R3203003	153
R3010220	75	R3034120	118	R3203008	153
R3010240	75	R3034130	118	R3206000	100
R3010260	75	R3034150	118	R3207008	123
R3010280	75	R3034320	118	R3208000	99
R3010352	70	R3034330	118	R3208001	125
R3010362	70	R3034350	118	R3208100	116
R3010400	74	R3110372	68	R3208150	116
R3010510	74	R3110382	69	R3208200	116
R3010630	74	R3110472	66	R3208300	116
R3010800	74	R3110482	67	R3208500	116
R3010810	74	R3110572	64	R3213010	175
R3010900	75	R3110582	65	R3213020	175
R3010901	75	R3192010	175	R3213030	175
R3010902	75	R3192020	175	R3213050	175
R3010903	75	R3192030	175	R3213110	173
R3010904	75	R3192050	175	R3213120	173
R3010905	75	R3192210	175	R3213130	173
R3010906	75	R3192220	175	R3213150	173
R3010910	75	R3192230	175	R3214010	176
R3011000	74	R3192250	175	R3214020	176
R3011100	74	R3192310	175	R3214030	176
R3011120	74	R3192320	175	R3214050	176
R3011410	74	R3192330	175	R3214110	174
R3011520	72,150	R3192350	175	R3214120	174
R3011620	72,150	R3194010	174	R3214130	174
R3011710	77	R3194020	174	R3214150	174
R3011810	78	R3194030	174	R3214510	176
R3011910	79	R3194050	174	R3214520	176
R3012010	150	R3194210	175	R3214530	176
R3012201	76	R3194220	175	R3214550	176
R3012202	42,43	R3194230	175	R3216010	176
R3029000	59	R3194250	175	R3216020	176
R3029001	59	R3194310	175	R3216030	176
R3029030	59	R3194320	175	R3216050	176
R3029031	59	R3194330	175	R3216110	174
R3029080	59	R3194350	175	R3216120	174
R3029093	59	R3195010	171	R3216130	174
R3029094	59	R3195020	171	R3216150	174
R3029095	59	R3195030	171	R3228000	93
R3029099	59	R3195050	171	R3228005	123,125
R3031120	117	R3195210	171	R3228006	123
R3031130	117	R3195220	171	R3228100	111
R3031150	117	R3195230	171	R3228150	111
R3031320	117	R3195250	171	R3228200	111
R3031330	117	R3195310	171	R3228300	111
R3031350	117	R3195320	171	R3228500	111
R3032120	117	R3195330	171	R3229000	92
R3032130	117	R3195350	171	R3229100	110
R3032150	117	R3196000	134	R3229150	110
R3032320	117	R3199100	170	R3229200	110
R3032330	117	R3199200	170	R3229300	110
R3032350	117	R3199300	170	R3229500	110
R3033120	118	R3199500	170	R3233001	175
R3033130	118	R3201100	170	R3233002	175
R3033150	118	R3201200	170	R3233003	175

Index

R3233005	175	R3267000	88	R3323130	174
R3233101	173	R3267002	123	R3323150	174
R3233102	173	R3267200	108	R3324010	176
R3233103	173	R3267300	108	R3324020	176
R3233105	173	R3267500	108	R3324030	176
R3234001	176	R3268000	87	R3324050	176
R3234002	176	R3268001	125	R3324110	174
R3234003	176	R3268002	123	R3324120	174
R3234005	176	R3268200	107	R3324130	174
R3234101	174	R3268300	107	R3324150	174
R3234102	174	R3268500	107	R3326010	176
R3234103	174	R3269002	122	R3326020	176
R3234105	174	R3269200	106	R3326030	176
R3236001	176	R3269300	106	R3326050	176
R3236002	176	R3269500	106	R3326110	174
R3236003	176	R3270002	123	R3326120	174
R3236005	176	R3270200	109	R3326130	174
R3236101	174	R3270300	109	R3326150	174
R3236102	174	R3270500	109	R3330382	69
R3236103	174	R3273002	124	R3726000	91
R3236105	174	R3273006	122,124	R3726001	91
R3241000	50	R3274002	124	R3726020	84
R3241004	50	R3282002	124	R3726030	83
R3241010	51	R3282100	112	R3726100	91
R3241014	51	R3282200	112	R3726101	91
R3243000	53	R3282300	112	R3726120	84
R3243004	53	R3282500	112	R3726130	83
R3243010	53	R3283100	115	R3728120	101
R3243014	53	R3283150	115	R3728140	102
R3244000	46	R3283200	115,116	R3729010	97
R3244004	46	R3283300	115,116	R3729011	97
R3244010	46	R3283500	115	R3729030	98
R3244014	46	R3286111	58	R3729031	98
R3256000	95	R3286113	58	R3729040	82
R3256100	114	R3286211	60	R3729041	82
R3256150	114	R3286212	60	R3729050	96
R3256200	114	R3300100	170	R3729051	96
R3256300	114	R3300200	170	R3729052	96
R3256500	114	R3300300	170	R3729060	90
R3257000	94	R3300500	170	R3729070	89
R3257100	113	R3310010	178	R3729071	89
R3257150	113	R3310020	178	R3729072	89
R3257200	113	R3310030	178	R3729110	97
R3257300	113	R3310050	178	R3729111	97
R3257500	113	R3311010	178	R3729112	97
R3260030	57	R3311020	178	R3729130	98
R3260080	42	R3311030	178	R3729131	98
R3260081	42	R3311050	178	R3729140	82
R3265000	86	R3312010	178	R3729141	82
R3265002	122	R3312020	178	R3729150	96
R3265200	105	R3312030	178	R3729151	96
R3265300	105	R3312050	178	R3729152	96
R3265500	105	R3323010	175	R3729160	90
R3266000	85	R3323020	175	R3729170	89
R3266002	122	R3323030	175	R3729171	89
R3266200	104	R3323050	175	R3729172	89
R3266300	104	R3323110	174	R3734001	119
R3266500	104	R3323120	174	R3734002	119

Index

R3734003	119	R3916014	49	R4207050	173
R3734004	119	R3917010	54	R4208010	173
R3734005	119	R3917014	54	R4208020	173
R3734006	119	R3940014	44	R4208030	173
R3735010	62	R3940114	45	R4208050	173
R3735061	61	R4007403	11,38	R4299010	169
R3735062	61	R4007404	11,38	R4299020	169
R3735065	61	R4180020	76	R4299030	169
R3735066	61	R4191001	151	R4299050	169
R3735067	61	R4191010	172	R4510010	176
R3735081	43	R4191020	172	R4510020	176
R3735082	43	R4191030	172	R4510030	176
R3736300	22,31	R4191050	172	R4510050	176
R3737005	122,124	R4192001	151	R5000400	10
R3757006	125	R4192010	172,173	R5000401	10
R3801020	55	R4192020	172	R5000420	10
R3814015	23,32	R4192030	172	R5000500	10
R3814025	23,32	R4192050	172	R5000501	10
R3814040	23,32	R4194010	173	R5000520	10
R3814060	23,32	R4194020	173	R5000530	10
R3814120	23,32	R4194030	173	R5000600	10
R3818002	23	R4194050	173	R5000601	10
R3818015	23,32,23	R4195010	173	R5000620	10
R3818025	23,32,23	R4195020	173	R5001000	10,38
R3818060	23,32,23	R4195030	173	R5001100	10,38
R3818120	23,32,23	R4195050	173	R5003000	10
R3820046	38	R4198010	168	R5003100	10
R3820100	14	R4198020	168	R5003300	10
R3820110	15	R4198030	168	R5003400	10
R3820111	16	R4198050	168	R5003600	10,38
R3820112	28	R4199010	168	R5003704	10,38
R3820120	17	R4199020	168	R5003706	10,38
R3820121	17	R4199030	168	R5004100	10
R3820123	29	R4199050	168	R5004200	10,38
R3820130	20	R4200003	151	R5004208	10,38
R3820140	21	R4201010	169	R5007100	11,38
R3820151	19	R4201020	169	R5007300	11,38
R3820153	30	R4201030	169	R5007304	11,38
R3820154	30	R4201050	169	R5009708	38
R3820156	15,18	R4202002	154	R5009808	10
R3820157	18	R4203000	152	R5009900	10
R3825010	23	R4203001	152	R5100400	38
R3825020	21	R4203005	152	R5100401	38
R3881124	56	R4203006	152	R5100420	38
R3881148	56	R4203007	152	R5100500	38
R3891124	56	R4203008	152	R5100501	38
R3910010	47	R4203009	152	R5100520	38
R3910011	47	R4204010	173	R5100600	38
R3910014	47	R4204020	173	R5100601	38
R3910100	48	R4204030	173	R5100620	38
R3910101	48	R4204050	173	R5103000	38
R3910104	48	R4205010	173	R5103100	38
R3911010	52	R4205020	173	R5103300	38
R3911014	52	R4205030	173	R5103400	38
R3911110	52	R4205050	173	R5104100	38
R3911114	52	R4207010	173	R5109900	38
R3914010	47	R4207020	173		
R3914014	47	R4207030	173		

U.S. Headquarters

RiT Technologies Inc.

Tel: +1.201.512.1970

Fax: +1.201.512.1286

1.800.RiT.1647

E-mail: marketing@rittech.com

International Headquarters

RiT Technologies Ltd.

Tel: +972.3.645.5151

Fax: +972.3.647.4115

E-mail: mkt@rittech.com

RiT Rep. in China

Tel: +86.10.5172.7712

Fax: +86.10.5172.7719 ex. 606

email: mktg.china@rittech.com

RiT Rep. in Latin America

Tel: +55.11.9953.3577

Fax: +55.11.4121.3068

E-mail: mktg.la@rittech.com

RiT Rep. Office in Russia

Tel: +7.495.684.0319

Fax: +7.495.684.0319

E-mail: mkt@rit.ru

RiT Rep. in UK

Tel: +44.788.072.6790

E-mail: mktg.uk@rittech.com

RiT Rep. in India

Tel: +91.22.2471.5263

Fax: +91.22.2471.1616

E-mail: mktg.india@rittech.com

R4001193 B.0



www.rittech.com

